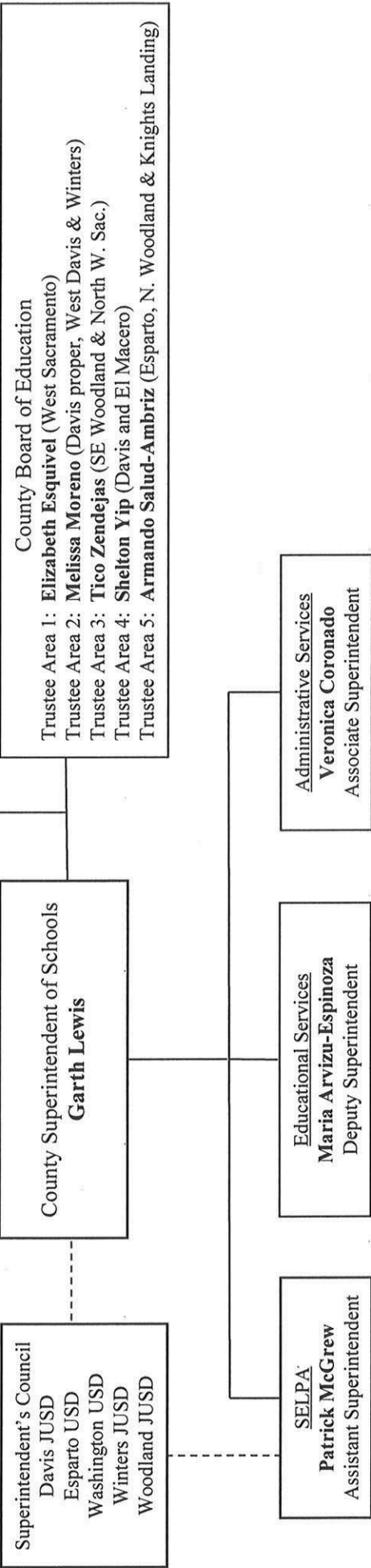




2024-25

Yolo County Voters and Residents





2024-25

County Superintendent

**Superintendent
Garth Lewis**

Yvette Seibert 1.0
Executive Assistant, Conf.
Anthony Volkar 1.0
Public Information Officer &
Community Outreach

Human Resources
Cindy Nguyen 1.0
Assistant Superintendent

Administrative Services
Veronica Coronado 1.0
Associate Superintendent

Educational Services
Maria Arvizu-Espinoza 1.0
Deputy Superintendent

Internal Fiscal Services
VACANT 1.0
Director

External Business Services
Lorelle Mudd 1.0
Director

Special Education
Marty Remmers 1.0
Director

Equity & Support Services
Stan Mojsich 1.0
Assistant Superintendent

Early Childhood Education
Shannon McClarin 1.0
Director

Support Operations Services
Matt Juchniewicz 1.0
Director

Information Technology
Carl Fahle 1.0
Director

SPED Principals
Jessica Bohatch 1.0
Sarah Portugal 1.0
Alphonso Powell 1.0

Special Projects
Katrina Callaway 1.0
Executive Director

Teaching & Learning

Student Services
Jose Gutierrez 1.0
Principal

Prevention & Wellness
Adriane Laughter 1.0
Director



2024-25

Educational Services Division

Maria Arvizu-Espinoza, 1.0
Deputy Superintendent

Le Taunya Westergaard 1.0
Project Coordinator

Anissa Iniguez 1.0
Administrative Assistant
VACANT .50
Program Data Analyst

Equity & Support Services
Stan Mojsich, 1.0
Assistant Superintendent

Special Programs
Katrina Callaway 1.0
Executive Director

Prevention & Wellness
Adriane Laughter 1.0
Director
Andrew Martinez 1.0
Program Specialist I
VACANT 1.0
Youth Outreach &
Homeless Services

Administrative Secretary
Classified 1.0

Alternative Education
Jose Gutierrez 1.0
Principal
Monica Aceves Robles 1.0
Program Specialist I

Administrative Secretary 1.0
Certificated 6.0
Classified 4.0

Teaching & Learning
An Ta 1.0
Program Specialist III/Administrator
Catherine Irwin 1.0
Program Coordinator II-Multi-Tiered
Systems of Support
Heather Schlamman 1.0
Program Coordinator II-Language &
Literacy
Edwin Ortega Beltran 1.0
Program Specialist I
Mayra Meza Chavez
Program Coordinator I-College & Career
Readiness
Hayley Yasui 1.0
Program Specialist I-College & Career
Readiness
Eric Banuelos 1.0
Adult Education Workforce Specialist

Administrative Secretary 1.0

Special Education
Marty Remmers 1.0
Director
Jessica Bohatch-Easton 1.0
Principal
Sarah Portugal 1.0
Principal
Alphonso Powell 1.0
Principal
Jocelyn Barrrios 1.0
Behavior Analyst
Robyn Grippa 1.0
Behavior Analyst

Administrative Secretary 2.0
Secretary 1.0
Certificated 39.60
Classified 69.8125

Early Childhood Education
Shannon McClarin 1.0
Director/LCCPC Coordinator
Katrina Hopkins 1.0
Program Administrator HS/EHS
Kathleen Glassman 1.0
Program Administrator Early
Learning & Care
Naomi Gonzalez 1.0
Disabilities/Mental Health Manager
Silvia Meza Lara 1.0
Education Services Manager
Nicole Castrejon 1.0
Family Support Services Manager
Angela Diaz 1.0
Health Services/Quality Assurance
Manager
Marlene Hernandez 1.0
Site Coordinator
Sandra Hernandez 1.0
Site Coordinator
M. Connie Luna-Garcia 1.0
Site Coordinator
Maria Robles 1.0
Site Coordinator

Administrative Secretary 1.0
Secretary 1.0
Certificated 70.1563
Classified 14.5



2024-25

Administrative Services Division

Veronica Coronado 1.0
Associate Superintendent

Monica Pascoe 1.0
Administrative Assistant

External Business Services
Lorelle Mudd 1.0
Director

Bridget Vaughan 1.0
Assistant Director

Business Analyst 1.0
Sr. Business Services Tech. 3.0
Business Services Tech. 1.0

Internal Fiscal Services
VACANT 1.0
Director

Corwin Lowe 1.0
Assistant Director

Business Analyst 1.0
Sr. Bus. Services Tech. 3.0
Business Services Tech. 1.0

Information Technology Services
Carl Fahle 1.0
Director

Administrative Secretary 1.0
Sr. Computer Systems Specialist 3.0
Computer Systems Specialist 1.0
Network Systems Administrator 1.0
Network Engineer 1.0
Technology Support Specialist 1.0

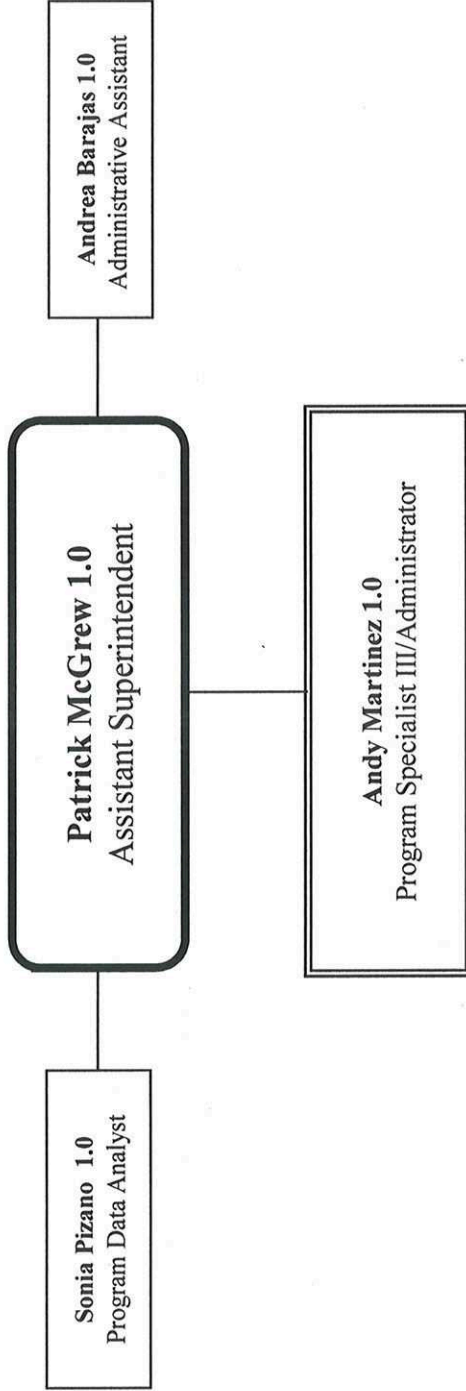
Support Operations Services
Matt Juchniewicz 1.0
Director

Ray Lippincott 1.0
Project Manager

Administrative Secretary 1.0
Sr. Maintenance Tech 1.0
Maintenance Technician 3.0
Custodian 3.625
Warehouse & Inventory Control Tech 1.0



2024-25
SELPA





2024-25

Human Resources

