

RECORDS OF FRIABLE AND NONFRIABLE ACBM  
(FORM B)

Inspection Dates(s): June 7, 2018

THREE-YEAR REINSPECTION

SCHOOL YCCA Charter School					CDS CODE 57-10579-0137422
ADDRESS (NUMBER) (STREET) (CITY) (ZIP) 1280 Santa Anita Court, Suite 190 Woodland 95776					SCHOOL PHONE NUMBER (530) 668-3777

**-IMPORTANT-**

Each building and functional space with friable ACBM or friable assumed ACBM listed on this form requires completion of Form C (PHYSICAL AND HAZARD ASSESSMENT OF FRIABLE ACBM OR FRIABLE ASSUMED ACBM). Indicated location of material on blueprint, diagram or narrative in square or linear feet, and attach a copy. (Sec. 763.93).

LINE	BUILDING NAME & FUNCTIONAL SPACE (Indicate Address if Different From Above)	CHECK ONE			CHECK ONE			
		SUR-			ACBM		ASSUMED ACBM	
		FACING	TSI	MISC	FRIABLE	NON-FRIABLE	FRIABLE	NON-FRIABLE
1.	1 <sup>st</sup> Floor	X		X				
2.	2 <sup>nd</sup> Floor	X		X				
3.								
4.								
5.								
6.								
7.								
8.								
9.								
10.								
11.								
12.								
13.								
14.								
15.								
16.								
17.								

Z:\Clients\Yolo County Office of Education\18-4799 YCCA Charter School - Initial 3 Year, MP, & Pre-Reno Asb Survey\Management Plan\Word Perfect Documents\FormB.wpd

**See attached "Homogeneous Materials Records" for all materials and their locations by building. On Form B all buildings are listed, and a summary of all non-friable and friable material is provided. Friable materials and their locations are listed separately under each building on Form B.**

**THREE-YEAR REINSPECTION  
HOMOGENEOUS ACBM RECORDS**

Date of Inspection: June 7, 2018

District: Yolo County Office of Education

Inspector: Blake Howes

School: YCCA Charter School

Building: 1<sup>st</sup> Floor

Material Class	Material	Homo. Mat. #	% Asb.	F <sup>2</sup> (S)/L.F.(L)	Location	Condition: Code & Comments	Friable Yes/No
M	Carpet Adhesive	1	NONE DETECTED	6,200 S	Throughout except restrooms, break room, & IT room	(13) Samples ECG-18-4799-01A, 01B, 01C collected 6-7-18	n/a
M	12" White Ceramic Floor Tile	2	NONE DETECTED	400 S	Restrooms	(13) Sample ECG-18-4799-02A collected 6-7-18	n/a
M	12" White Speckled Vinyl Floor Tile	3	NONE DETECTED	200 S	IT room	(13) Sample ECG-18-4799-03A collected 6-7-18	n/a
M	12" Blue/Gray Mottled Vinyl Floor Tile	4	NONE DETECTED	200 S	Break room	(13) Sample ECG-18-4799-04A collected 6-7-18	n/a
M	4" Gray Base Cove	5	NONE DETECTED	100 S	Throughout except restrooms	(13) Samples ECG-18-4799-07A, 07B collected 6-7-18	n/a
M	Drywall & Joint Compound	6	NONE DETECTED	6,000 S	Throughout	(13) Samples ECG-18-4799-08A, 08B, 08C collected 6-7-18	n/a
S	Drywall Texture	7	NONE DETECTED	6,000 S	Throughout	(13) Samples ECG-18-4799-09A, 09B, 09C collected 6-7-18	n/a
M	2'x4' Ceiling Panels	8	NONE DETECTED	8,000 S	Throughout	(13) Sample ECG-18-4799-10A collected 6-7-18	n/a

Z:\Clients\Yolo County Office of Education\18-4799 YCCA Charter School - Initial 3 Year, MP, & Pre-Reno Asb Survey\Sites\YCCA HMIR.wpd

**CONDITION CODE**

General Condition: (1) Good (2) Damaged (3) Significantly Damaged (25% or more)  
Change in Condition: (4) No (5) Yes (If Yes, explain under comments)  
Abated: (6) Repaired (7) Removed (8) Encapsulated (9) Enclosed (10) Isolated & Restricted  
Miscellaneous: (11) Inaccessible, no inspection data (12) Other (Explain under comments) (13) Non-Asbestos/Not Inspected

**CONSULT ORIGINAL AND SUPPLEMENTARY INSPECTION REPORTS FOR MATERIALS WITH TRACE AMOUNTS OF ASBESTOS**



**THREE-YEAR REINSPECTION  
HOMOGENEOUS ACM RECORDS**

Date of Inspection: June 7, 2018

District: Yolo County Office of Education

Inspector: Blake Howes

School: YCCA Charter School

Building: 2<sup>nd</sup> Floor

Material Class	Material	Homo. Mat. #	% Asb.	F <sup>2</sup> /L.F.	Location	Condition: Code & Comments	Friable Yes/No
M	Carpet Adhesive	1	NONE DETECTED	6,000 S	Throughout	(13) Samples ECG-18-4799-01D, 01E collected 6-7-18	n/a
M	4" Gray Base Cove	5	NONE DETECTED	200 S	Throughout	(13) Samples ECG-18-4799-07C, 07D collected 6-7-18	n/a
M	Drywall & Joint Compound	6	NONE DETECTED	5,000 S	Throughout	(13) Samples ECG-18-4799-08D, 08E collected 6-7-18	n/a
S	Drywall Texture	7	NONE DETECTED	5,000 S	Throughout	(13) Samples ECG-18-4799-09D, 09E, 09F, 09G collected 6-7-18	n/a
M	2'x4' Ceiling Panels	8	NONE DETECTED	6,000 S	Throughout	(13) Sample ECG-18-4799-10B collected 6-7-18	n/a

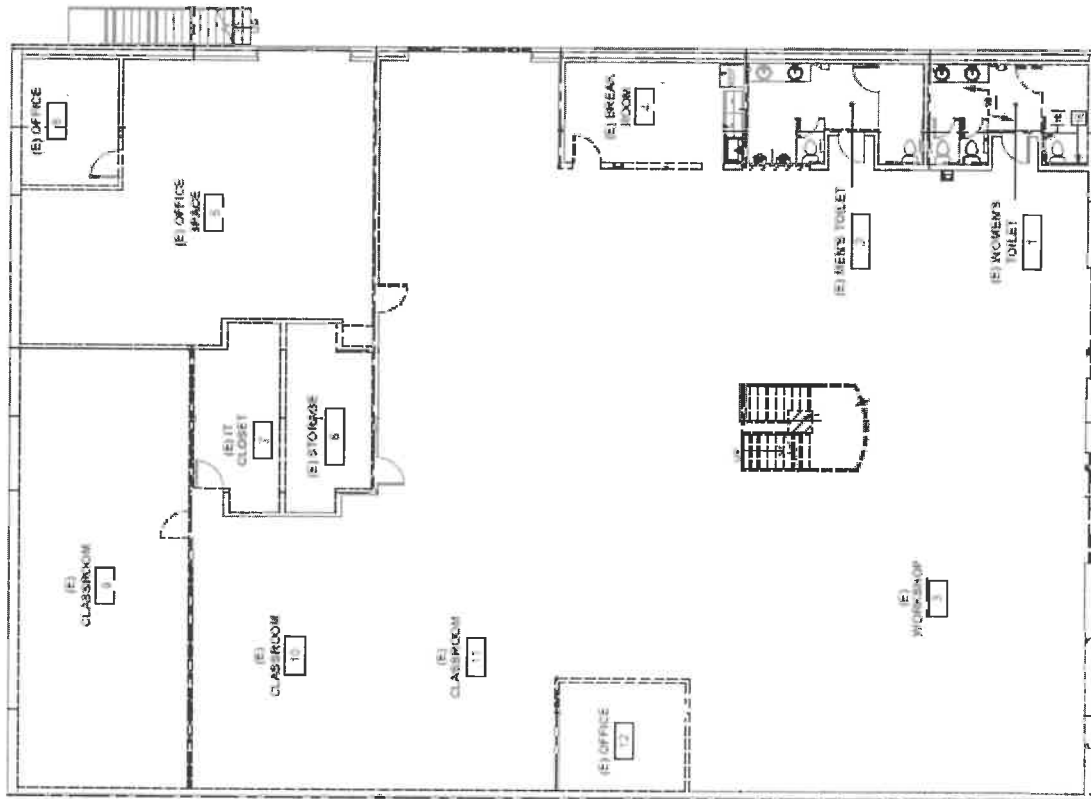
Z:\Clients\Yolo County Office of Education\18-4799 YCCA Charter School - Initial 3 Year, MP, & Pre-Reno Asb Survey\Sites\YCCA HMR.wpd

**CONDITION CODE**

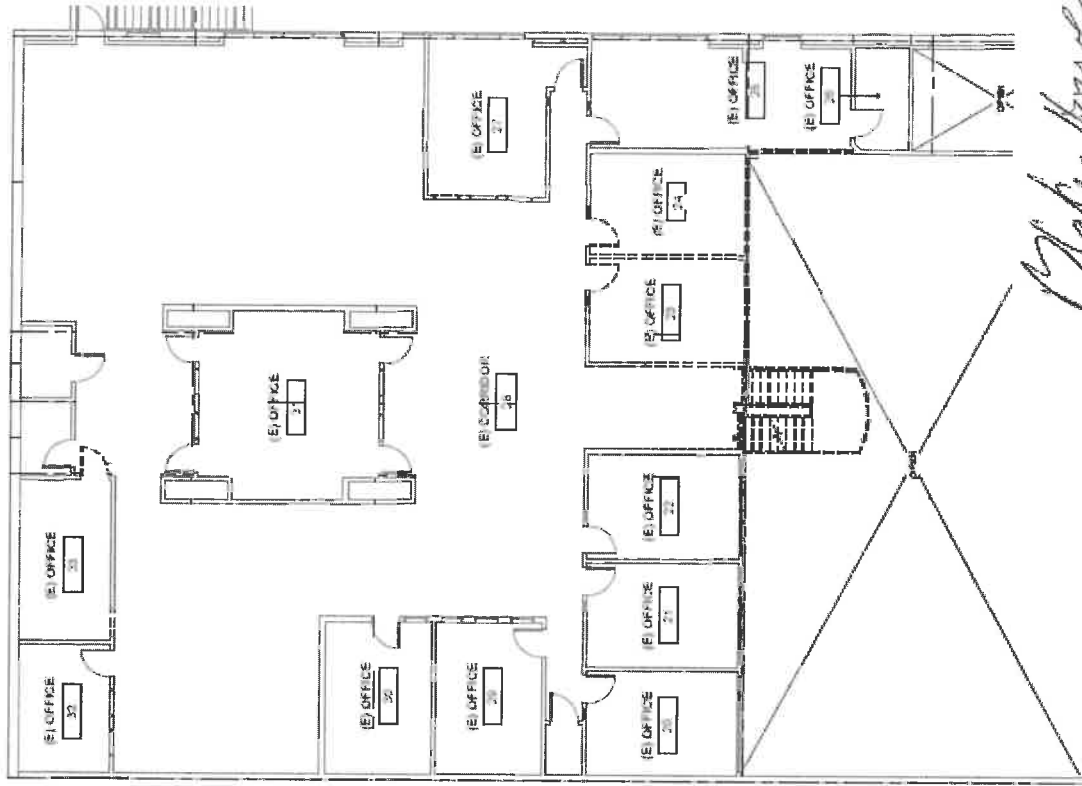
General Condition: (1) Good (2) Damaged (3) Significantly Damaged (25% or more)  
 Change in Condition: (4) No (5) Yes (If Yes, explain under comments)  
 Abated: (6) Repaired (7) Removed (8) Encapsulated (9) Enclosed (10) Isolated & Restricted  
 Miscellaneous: (11) Inaccessible, no inspection data (12) Other (Explain under comments) (13) Non-Asbestos/Not Inspected

**CONSULT ORIGINAL AND SUPPLEMENTARY INSPECTION REPORTS FOR MATERIALS WITH TRACE AMOUNTS OF ASBESTOS**

First Floor



Second Floor



*Blake Howes*

Yolo County Office of Education  
 YCCA Charter School  
 1280 Santa Anita Court Ste. 190  
 Woodland, CA 95695

Entek Consulting Group, Inc.  
 4200 Rocklin Road, Suite 7  
 Rocklin, CA 95677  
 Map Not to Scale

AHERA 3 Year Reinspection  
 Performed by: Blake Howes  
 June 7, 2018  
 Project #18-4798