



**YOLO COUNTY COMMITTEE ON SCHOOL DISTRICT
ORGANIZATION MEETING**

02/25/2022 09:00 AM

YOLO COUNTY OFFICE OF EDUCATION - Woodland Conference Room - 1280
Santa Anita Court, Suite 120, Woodland, CA 95776 &
ZOOM VIDEO CONFERENCING
Open Session - 9:00 AM

AGENDA

The Yolo County Office of Education's vision is to be a model of excellence in educational service, innovation, and impact.



Scan the above QR code with your phone to view this meeting agenda on your phone.

BOARD MEMBERS

Melissa Moreno, President

Tico Zendejas

Elizabeth Esquivel

Carol Souza Cole

Shelton Yip

This meeting is being agendized to allow Board members, staff and the public to participate in a hybrid meeting via in person at the Yolo County Office of Education and by Zoom video conferencing. If attendees join the meeting in person, please adhere to the COVID-19 state-mandated guidance which includes social distancing and wearing masks.

Webinar option for public to view the meeting:

OPTION 1: COMPUTER: Using a computer or Mobile Phone:

Please click the link below to join the webinar:

<https://ycoe.zoom.us/j/92308139535>

(<https://simbli.eboardsolutions.com/SU/kgznYHu817NfnXtt5vf3Qg==>)

OPTION 2: PHONE: Using a traditional phone or cell phone:

Or One tap mobile :

US: +16699006833,,92308139535# or +13462487799,,92308139535#

Or Telephone:

Dial (for higher quality, dial a number based on your current location):

US: +1 669 900 6833 or +1 346 248 7799 or +1 253 215 8782 or +1 301 715 8592 or +1 312 626 6799 or +1 929 205 6099

Webinar ID: 923 0813 9535

Further instructions on how to submit your public comments can be found in the *Public Comment* section of this agenda.

1. OPENING PROCEDURES	6
1. Call to Order and Roll Call	7
2. Pledge of Allegiance	8
3. Approval of Agenda Motion to approve Agenda.	9
4. Public Comment This item is placed on the agenda for the purpose of providing visitors the opportunity to address the Board on any item(s) of business that does not appear on the formal agenda.	10

Visitors may also request recognition from the chairperson, to address the Board concerning an item on the agenda by completing the form provided at the door or following the public comment instructions below:

The Board reserves the right to establish a time limit on these discussions, or to refer them to the next regular meeting for further deliberation.

For those individuals who wish to make a public comment, please do so in the following manner:

- Via Zoom, press the "raise a hand" button during the public comment section of the meeting or state in the chat that you would like to make a comment and you will be unmuted.
-
- Before the meeting by google form:


http://bit.ly/Board_Comments

Please submit your Google form by the Board meeting date. A moderator for the meeting will read your comments for the record.

- In person at the Yolo County Office of Education, 1280 Santa Anita Court, Suite 120 in the Woodland Conference Room. To address the Board concerning an item on the agenda, please complete the form provided at the door. Please wear a mask and adhere to social distancing rules.
-
- By phone:

1. Call the Zoom phone number and enter the webinar ID for the meeting you wish to make public comment.
2. Meeting information and phone number can be found at: <https://www.ycoe.org>
(<https://simbli.eboardsolutions.com/SU/FINjDWJ0mTQA5kpluss8VSV4A==>)
3. When the Chair calls for the item on which you wish to speak on, press *9 to raise a hand and *6 to unmute. Speakers will be called on by the last four digits of their phone number. Phone numbers in their entirety will be visible online while speakers are speaking.
4. When prompted, please state your name for the record and provide your public comment.
5. You will have the allotted time given by the Chair to provide your comments. Once your time has ended, you will be moved out of the queue and your phone will be muted.
6. Participants who wish to speak on other items on the Agenda or for other comment periods please press *9 as above.

Comments may not exceed three (3) minutes.

2. A PUBLIC HEARING WILL BE HELD BY THE YOLO COUNTY COMMITTEE ON SCHOOL DISTRICT ORGANIZATION (COMMITTEE) TO RECEIVE COMMENTS FROM PARENTS, TEACHERS, MEMBERS OF THE COMMUNITY, AND BARGAINING UNIT LEADERS REGARDING THE ADOPTION OF REDISTRICTING PLAN FOR THE YOLO COUNTY BOARD OF EDUCATION TRUSTEE AREAS BASED UPON THE 2020 CENSUS. AT THE CONCLUSION OF THE PUBLIC HEARING, THE COMMITTEE MAY TAKE ACTION ON ADOPTION OF THE REDISTRICTING PLAN FOR THE TRUSTEE AREAS	12
3. Discussion and Action	13
1. Review and Approval of Resolution for Redistricting on Yolo COE Redistricting Maps 	14
The Board to consider adoption of one (1) proposed map and resolution at this meeting. Approved changes to the Yolo COE trustee area map would take effect for the November 2022 election (and its associated primaries).	
4. ADJOURNMENT	34

AGENDA PACKETS ARE AVAILABLE FOR REVIEW AT THE FOLLOWING LOCATIONS:

- Four calendar days prior to the meeting, a full Board packet is available for review at the office of the Yolo County Office of Education Reception Desk, 1280 Santa Anita Court, Suite #100,

Woodland (8:00 a.m. - 5 p.m., Monday through Friday - excluding County Office of Education holidays).

- Agenda documents distributed to the Board less than 72 hours before the meeting will be made available at the office of the Yolo County Office of Education Reception Desk, 1280 Santa Anita Court, Suite #100, Woodland (8:00 a.m. - 5:00 p.m., Monday through Friday - excluding County Office of Education holidays). [Government Code section 54957.5]
- Board Agendas are posted outside the YCOE Administrative Office building at 1280 Santa Anita Court, Suite #100 and #120, in weather-protected glass cases.
- Four (4) calendar days prior to the meeting, a full Board packet is available for review on the Yolo County Office of Education website: www.ycoe.org
- The Yolo County Office of Education does not discriminate against persons with disabilities and is an accessible facility. Persons with disabilities who wish to attend this meeting and require assistance in order to participate should contact the Executive Assistant to the Superintendent at (530) 668-3702 at least 24 hours in advance of the meeting to make reasonable arrangements to ensure accessibility. Language translation services and American Sign Language (ASL) interpreters will be provided with a minimum notice of three (3) business days prior to the meeting.



1. OPENING PROCEDURES



1. 1. Call to Order and Roll Call



1. 2. Pledge of Allegiance

1. 3. Approval of Agenda

Recommendation

Motion to approve Agenda.

1. 4. Public Comment

Quick Summary / Abstract

This item is placed on the agenda for the purpose of providing visitors the opportunity to address the Board on any item(s) of business that does not appear on the formal agenda.

Visitors may also request recognition from the chairperson, to address the Board concerning an item on the agenda by completing the form provided at the door or following the public comment instructions below:

The Board reserves the right to establish a time limit on these discussions, or to refer them to the next regular meeting for further deliberation.

For those individuals who wish to make a public comment, please do so in the following manner:

- Via Zoom, press the "raise a hand" button during the public comment section of the meeting or state in the chat that you would like to make a comment and you will be unmuted.
-
- Before the meeting by google form:

http://bit.ly/Board_Comments

Please submit your Google form by the Board meeting date. A moderator for the meeting will read your comments for the record.

- In person at the Yolo County Office of Education, 1280 Santa Anita Court, Suite 120 in the Woodland Conference Room. To address the Board concerning an item on the agenda, please complete the form provided at the door. Please wear a mask and adhere to social distancing rules.
-
- By phone:
 1. Call the Zoom phone number and enter the webinar ID for the meeting you wish to make public comment.
 2. Meeting information and phone number can be found at: <https://www.ycoe.org> (<https://simbli.eboardsolutions.com/SU/FINjDWJ0mTQA5kpluss8VSV4A==>)
 3. When the Chair calls for the item on which you wish to speak on, press *9 to raise a hand and *6 to unmute. Speakers will be called on by the last four digits of their phone number. Phone numbers in their entirety will be visible online while speakers are speaking.
 4. When prompted, please state your name for the record and provide your public comment.
 5. You will have the allotted time given by the Chair to provide your comments. Once your time has ended, you will be moved out of the queue and your phone will be muted.
 6. Participants who wish to speak on other items on the Agenda or for other comment periods please press *9 as above.



Comments may not exceed three (3) minutes.

2. A PUBLIC HEARING WILL BE HELD BY THE YOLO COUNTY COMMITTEE ON SCHOOL DISTRICT ORGANIZATION (COMMITTEE) TO RECEIVE COMMENTS FROM PARENTS, TEACHERS, MEMBERS OF THE COMMUNITY, AND BARGAINING UNIT LEADERS REGARDING THE ADOPTION OF REDISTRICTING PLAN FOR THE YOLO COUNTY BOARD OF EDUCATION TRUSTEE AREAS BASED UPON THE 2020 CENSUS. AT THE CONCLUSION OF THE PUBLIC HEARING, THE COMMITTEE MAY TAKE ACTION ON ADOPTION OF THE REDISTRICTING PLAN FOR THE TRUSTEE AREAS

3. Discussion and Action

3. 1. Review and Approval of Resolution for Redistricting on Yolo COE Redistricting Maps




Description

Attached is the power point presentation and the new maps for review and action.

Recommendation

The Board to consider adoption of one (1) proposed map and resolution at this meeting. Approved changes to the Yolo COE trustee area map would take effect for the November 2022 election (and its associated primaries).

Supporting Documents

-  YoloCOE_PostMap3_02252022
-  YoloCOE_PostMap3_02252022
-  Resolution for Redistricting - YCOE - County Committee

Contact Person

David Soldani, Partner, Atkinson, Andelson, Loya, Ruud & Romo and Susan Miller, Senior Associate Director, Plan & Fund, Cooperative Strategies will present this item.



▶ **TRUSTEE AREA
SCENARIOS**

YOLO COUNTY OFFICE OF EDUCATION

FEBRUARY 25, 2022

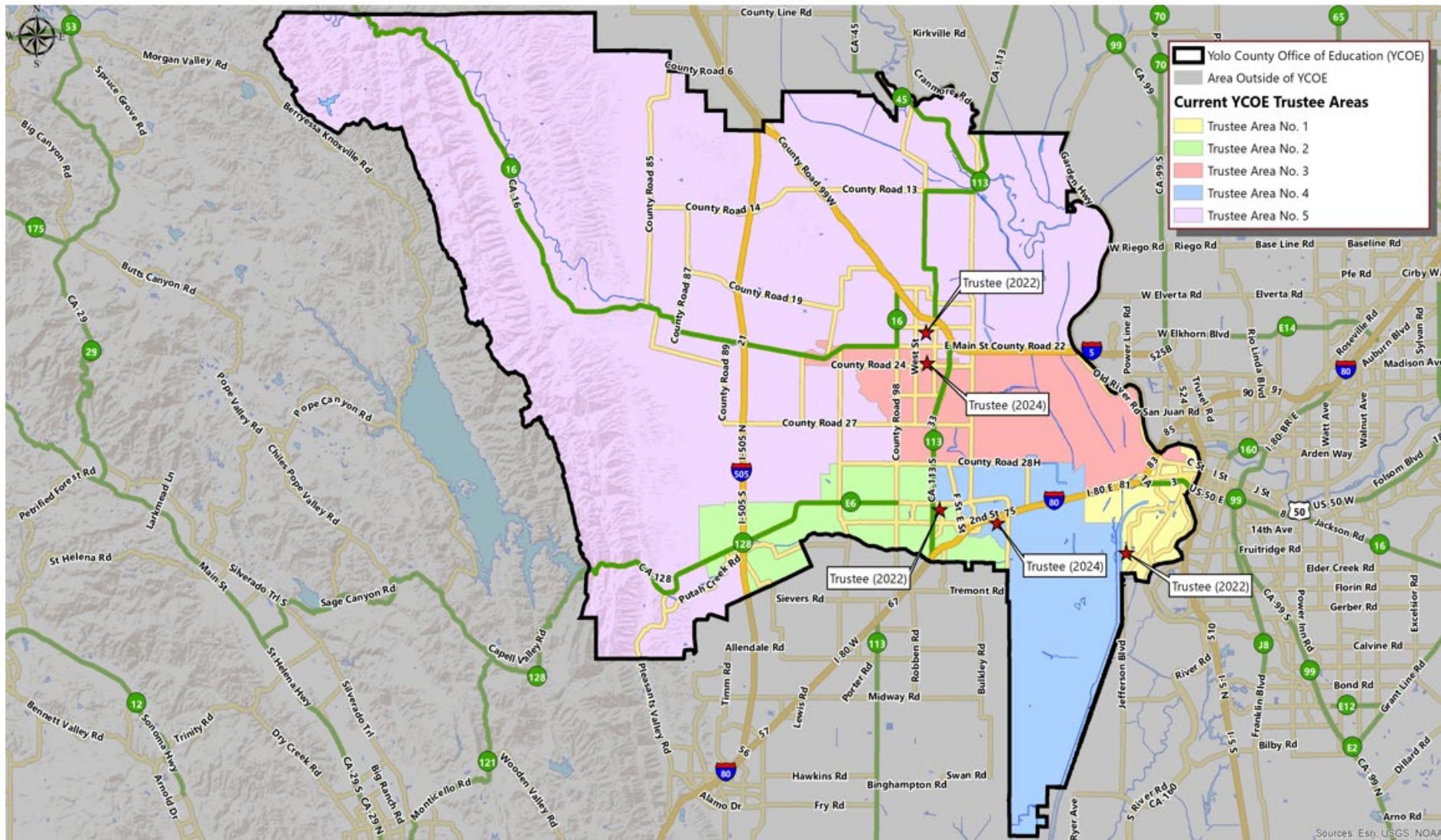
 **COOPERATIVE
STRATEGIES**
ASSESS • PLAN • FUND • BUILD

▶ DISTRICT DEMOGRAPHICS
2020 CENSUS DATA

- Validated redistricting data was released by the California Department of Finance on September 20.
- This data showed substantial changes in the area served by Yolo County Office of Education from 2010 to 2020, including overall population growth of 15,909 (8%)

Population (Within District)	Total Population			
	2010 Census	2020 Census	Total Change	Percent Change
Trustee Area 1	39,275	44,997	5,722	14.6%
Trustee Area 2	41,426	44,854	3,428	8.3%
Trustee Area 3	38,758	43,262	4,504	11.6%
Trustee Area 4	40,518	41,685	1,167	2.9%
Trustee Area 5	39,477	40,565	1,088	2.8%
Total Population	199,454	215,363	15,909	8.0%

▶ CURRENT TRUSTEE AREAS



► CURRENT TRUSTEE AREAS

Census 2020 Total Population:	215,363	Ideal Trustee Area Size:	43,073	Total Variance:	10.3%
----------------------------------	---------	-----------------------------	--------	-----------------	-------

TRUSTEE AREA	Trustee Area 1		Trustee Area 2		Trustee Area 3		Trustee Area 4		Trustee Area 5	
	TP*	CVAP**	TP	CVAP	TP	CVAP	TP	CVAP	TP	CVAP
Population	44,997	28,359	44,854	34,508	43,262	26,608	41,685	29,007	40,565	26,704
Population Variance	4.5%	N/A	4.1%	N/A	0.4%	N/A	-3.2%	N/A	-5.8%	N/A
Hispanic/Latino	29.5%	19.8%	23.9%	20.4%	42.8%	32.2%	16.8%	11.5%	52.7%	39.3%
White	41.8%	55.5%	49.9%	56.0%	41.0%	55.4%	50.2%	63.1%	34.2%	50.7%
Black/African American	5.0%	6.0%	2.4%	2.1%	1.8%	2.8%	2.2%	2.6%	1.7%	1.7%
American Indian/Alaska Native	0.6%	0.4%	0.4%	0.1%	0.5%	0.5%	0.2%	0.4%	0.6%	0.4%
Asian	14.3%	11.7%	16.9%	17.5%	8.7%	6.5%	22.9%	18.9%	6.2%	6.2%
Native Hawaiian/Other Pacific Islander	1.0%	1.0%	0.5%	0.1%	0.6%	0.2%	0.2%	0.3%	0.3%	0.1%
Other	0.7%	N/A	0.6%	N/A	0.6%	N/A	0.7%	N/A	0.4%	N/A
Two or More Races	7.2%	5.5%	5.5%	3.7%	4.1%	2.4%	6.8%	3.2%	3.8%	1.5%

*Total Population; Source: Redistricting Database for California, Published by Statewide Database on September 20, 2021

**Citizen Voting Age Population (CVAP); Source: American Community Survey, 2015-2019 Data

▶ CONSIDERATIONS IN TRUSTEE AREAS



Each area shall contain nearly equal number of inhabitants



Follow man-made and natural geographic features, as much as possible



Drawn to comply with the Federal Voting Rights Act



Respect incumbency, if possible



Compact and contiguous, as much as possible



Other local considerations



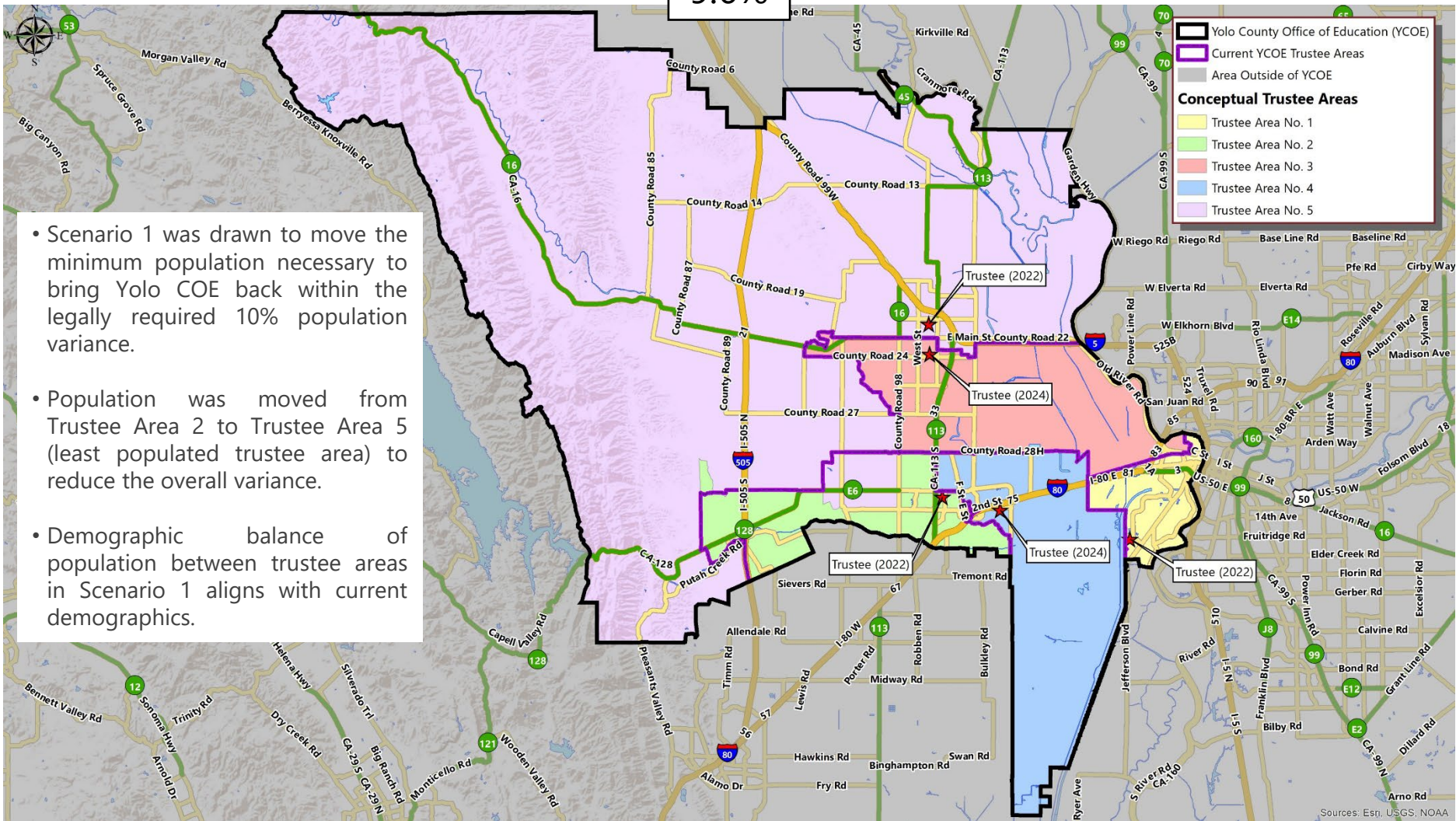
Respect communities of interest, as much as possible

▶ CONCEPTUAL TRUSTEE AREAS

SCENARIO 1

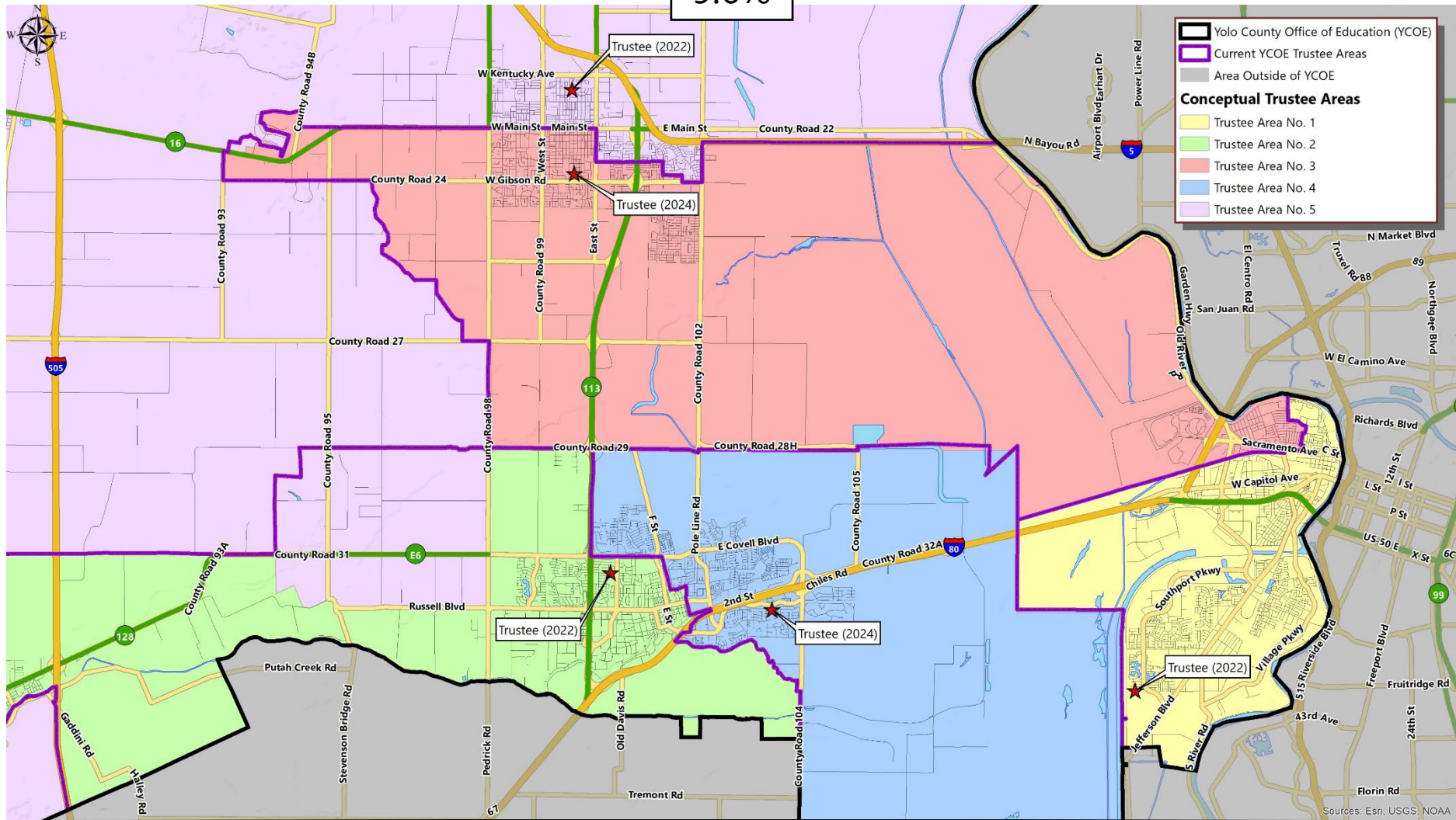
9.6%

- Scenario 1 was drawn to move the minimum population necessary to bring Yolo COE back within the legally required 10% population variance.
- Population was moved from Trustee Area 2 to Trustee Area 5 (least populated trustee area) to reduce the overall variance.
- Demographic balance of population between trustee areas in Scenario 1 aligns with current demographics.



▶ CONCEPTUAL TRUSTEE AREAS SCENARIO 1

9.6%



► **DEMOGRAPHICS**
SCENARIO 1

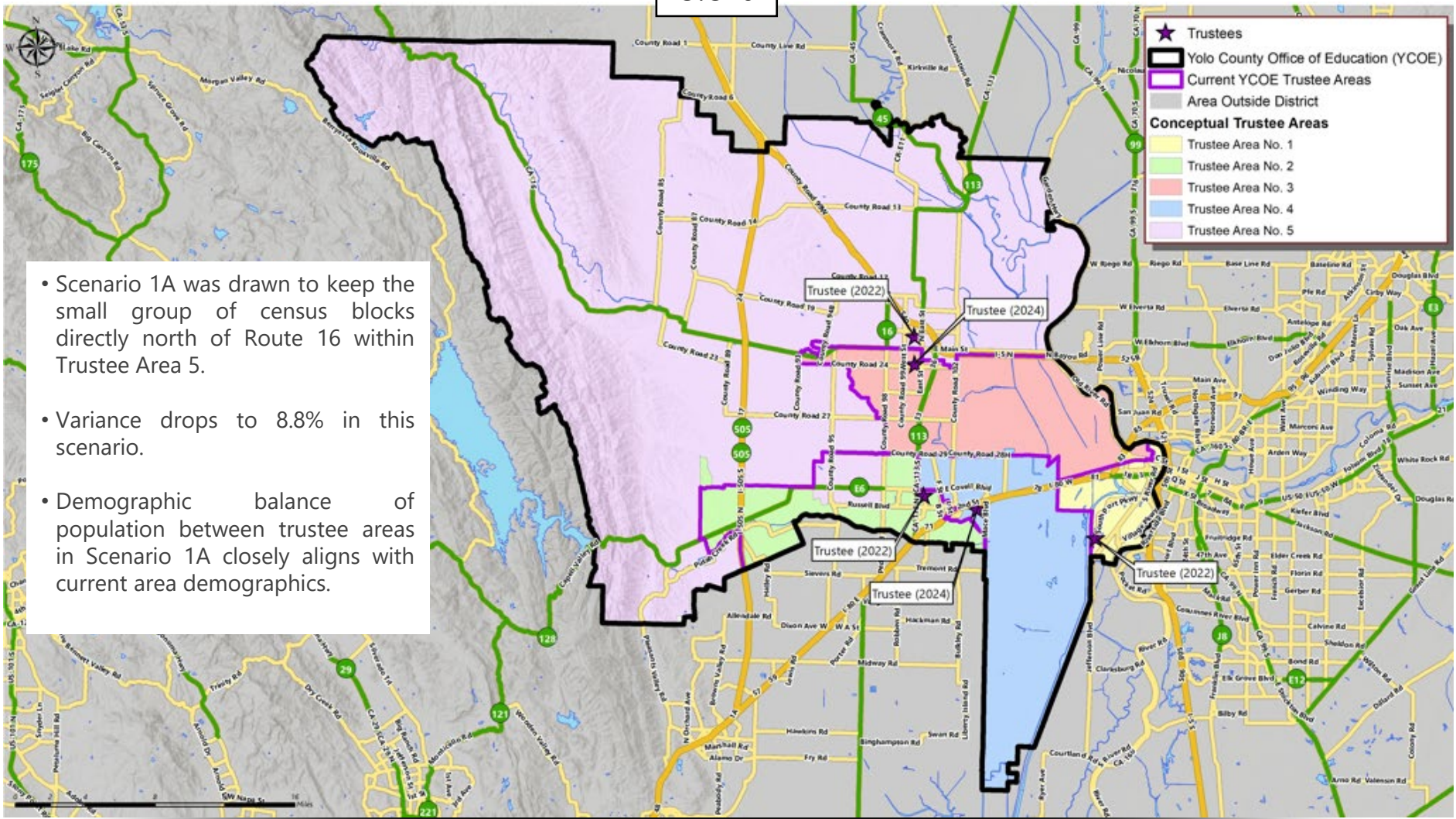
Total Population:	215,363	Ideal Trustee Area Size:	43,073	Variance:	9.6%
--------------------------	----------------	---------------------------------	---------------	------------------	-------------

TRUSTEE AREA	Trustee Area 1		Trustee Area 2		Trustee Area 3		Trustee Area 4		Trustee Area 5	
TP* vs. CVAP**	TP	CVAP	TP	CVAP	TP	CVAP	TP	CVAP	TP	CVAP
Population	44,997	28,359	44,336	34,208	43,473	26,751	41,685	29,007	40,872	26,861
Population Variance	4.5%	N/A	2.9%	N/A	0.9%	N/A	-3.2%	N/A	-5.1%	N/A
Hispanic/Latino	29.5%	19.8%	24.0%	20.5%	42.7%	32.1%	16.8%	11.5%	52.4%	39.0%
White	41.8%	55.5%	49.6%	55.8%	41.1%	55.5%	50.2%	63.1%	34.6%	50.9%
Black/African American	5.0%	6.0%	2.4%	2.1%	1.8%	2.8%	2.2%	2.6%	1.7%	1.7%
American Indian/Alaska Native	0.6%	0.4%	0.4%	0.1%	0.5%	0.5%	0.2%	0.4%	0.6%	0.4%
Asian	14.3%	11.7%	17.0%	17.5%	8.7%	6.4%	22.9%	18.9%	6.2%	6.3%
Native Hawaiian/Other Pacific Islander	1.0%	1.0%	0.5%	0.1%	0.6%	0.2%	0.2%	0.3%	0.3%	0.1%
Other	0.7%	0.0%	0.6%	0.0%	0.6%	0.0%	0.7%	0.0%	0.4%	0.0%
Two or More Races	7.2%	5.5%	5.6%	3.8%	4.1%	2.4%	6.8%	3.2%	3.8%	1.5%

▶ CONCEPTUAL TRUSTEE AREAS

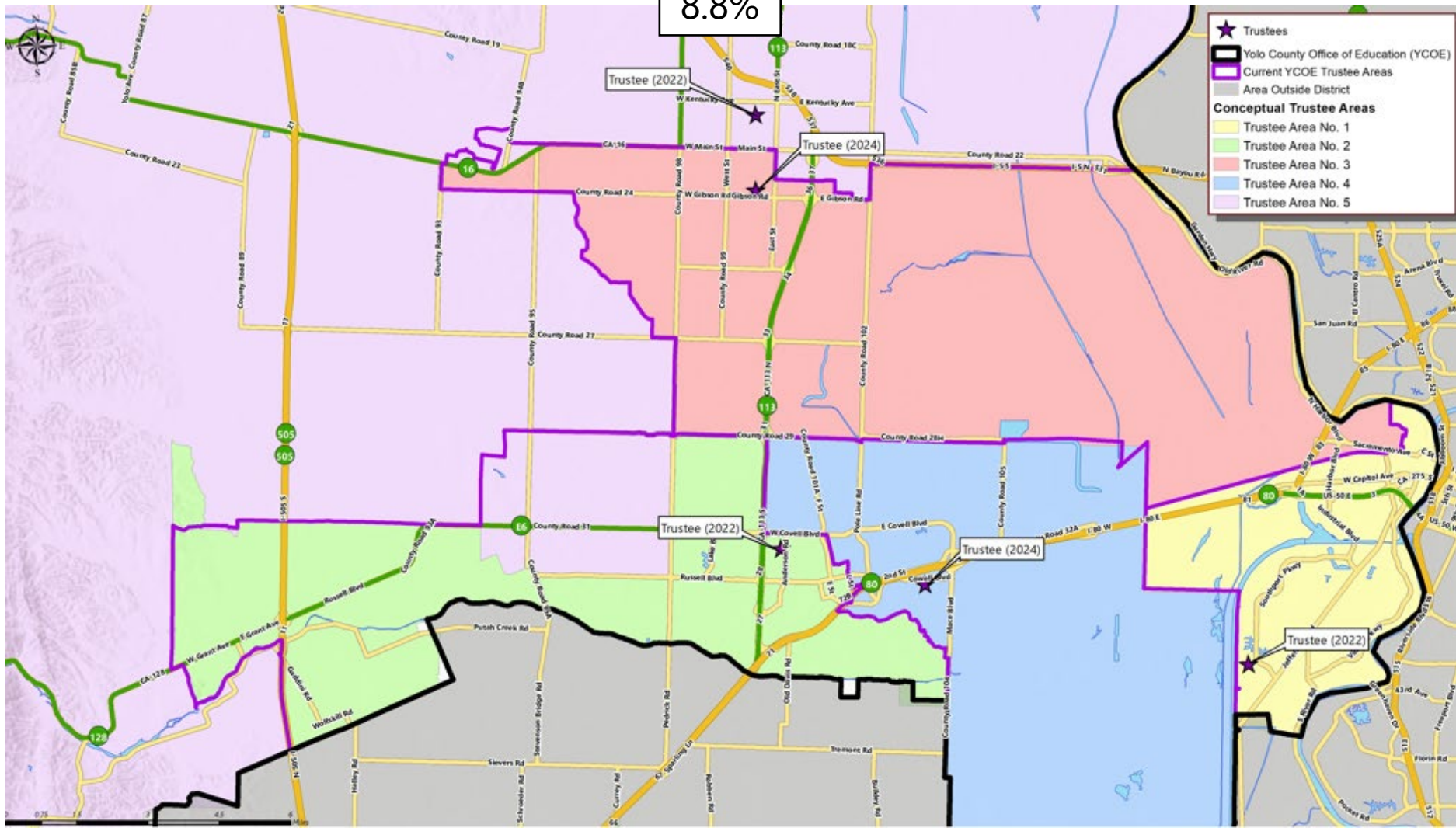
SCENARIO 1A

8.8%



- Scenario 1A was drawn to keep the small group of census blocks directly north of Route 16 within Trustee Area 5.
- Variance drops to 8.8% in this scenario.
- Demographic balance of population between trustee areas in Scenario 1A closely aligns with current area demographics.

▶ CONCEPTUAL TRUSTEE AREAS
SCENARIO 1A



► **DEMOGRAPHICS**
SCENARIO 1A

Total Population:	215,363	Ideal Trustee Area Size:	43,073	Variance:	8.8%
--------------------------	----------------	---------------------------------	---------------	------------------	-------------

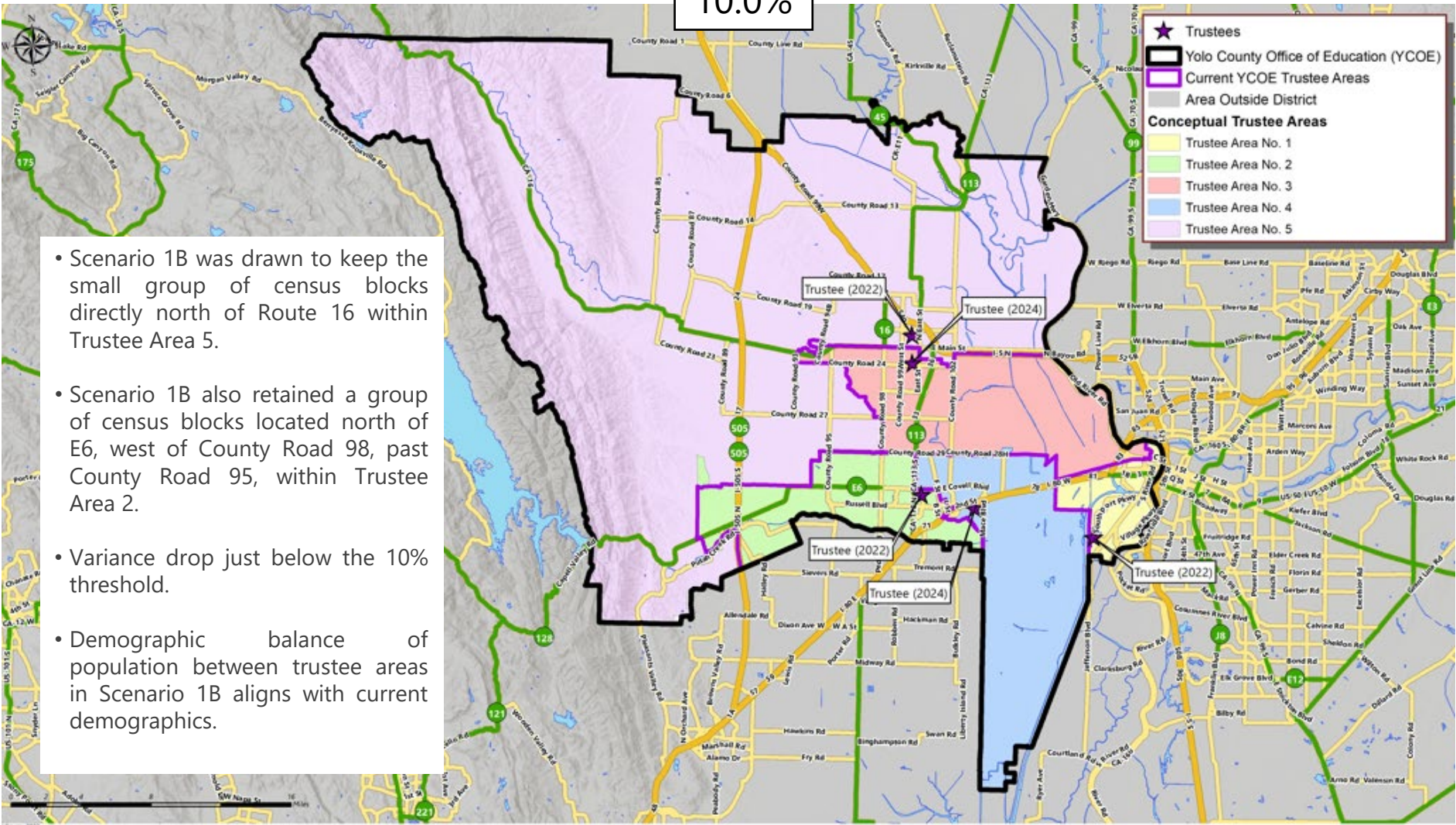
TRUSTEE AREA	Trustee Area 1		Trustee Area 2		Trustee Area 3		Trustee Area 4		Trustee Area 5	
TP* vs. CVAP**	TP	CVAP	TP	CVAP	TP	CVAP	TP	CVAP	TP	CVAP
Population	44,997	28,359	44,336	34,208	43,129	26,535	41,685	29,007	41,216	27,077
Population Variance	4.5%	N/A	2.9%	N/A	0.1%	N/A	-3.2%	N/A	-4.3%	N/A
Hispanic/Latino	29.5%	19.8%	24.0%	20.5%	42.9%	32.2%	16.8%	11.5%	52.1%	38.8%
White	41.8%	55.5%	49.6%	55.8%	40.9%	55.4%	50.2%	63.1%	34.9%	51.2%
Black/African American	5.0%	6.0%	2.4%	2.1%	1.8%	2.8%	2.2%	2.6%	1.7%	1.7%
American Indian/Alaska Native	0.6%	0.4%	0.4%	0.1%	0.5%	0.5%	0.2%	0.4%	0.6%	0.4%
Asian	14.3%	11.7%	17.0%	17.5%	8.7%	6.5%	22.9%	18.9%	6.2%	6.2%
Native Hawaiian/Other Pacific Islander	1.0%	1.0%	0.5%	0.1%	0.6%	0.2%	0.2%	0.3%	0.3%	0.1%
Other	0.7%	N/A	0.6%	N/A	0.6%	N/A	0.7%	N/A	0.4%	N/A
Two or More Races	7.2%	5.5%	5.6%	3.8%	4.1%	2.4%	6.8%	3.2%	3.8%	1.5%

▶ CONCEPTUAL TRUSTEE AREAS

SCENARIO 1B

10.0%

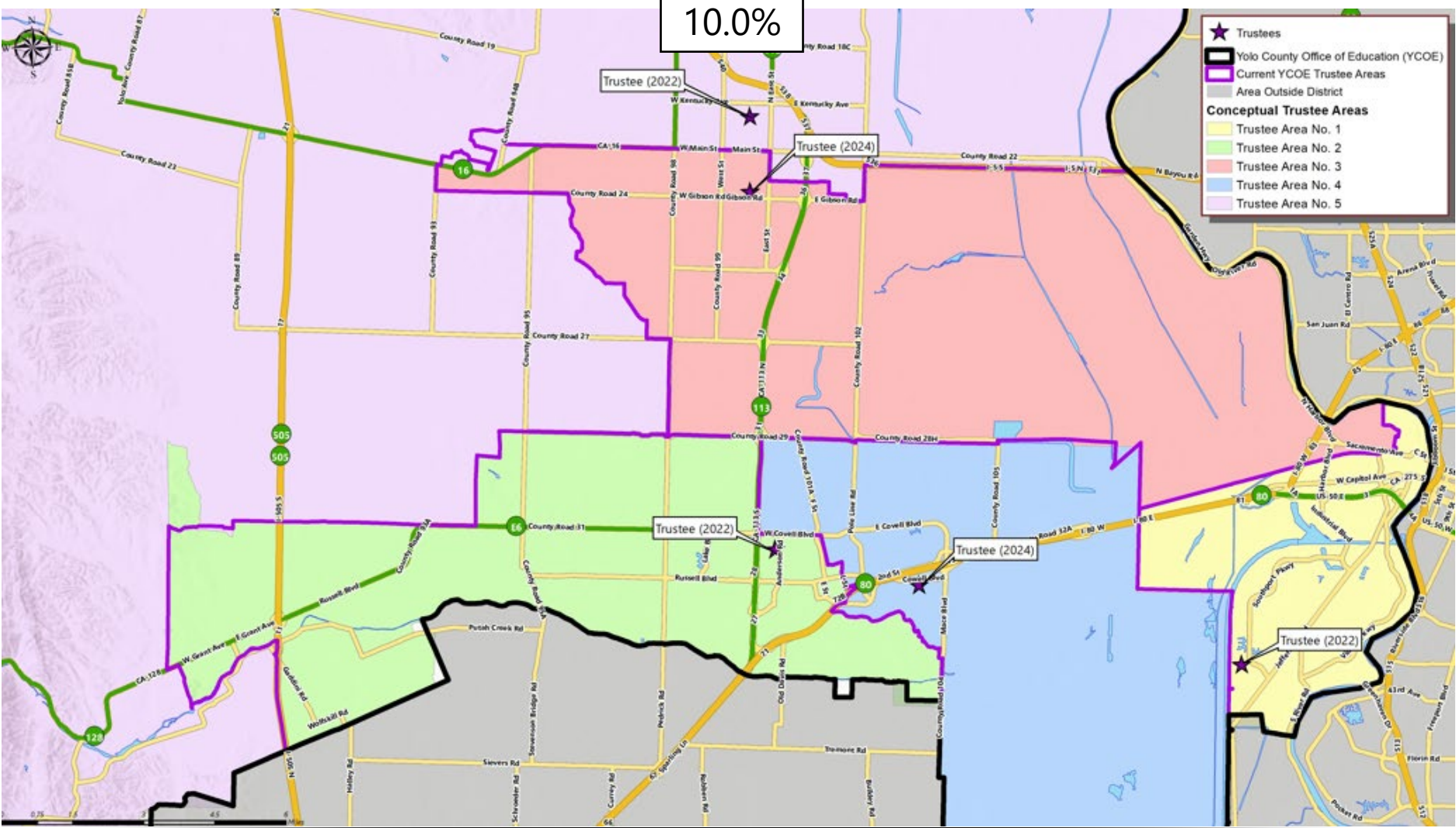
- Scenario 1B was drawn to keep the small group of census blocks directly north of Route 16 within Trustee Area 5.
- Scenario 1B also retained a group of census blocks located north of E6, west of County Road 98, past County Road 95, within Trustee Area 2.
- Variance drop just below the 10% threshold.
- Demographic balance of population between trustee areas in Scenario 1B aligns with current demographics.



▶ CONCEPTUAL TRUSTEE AREAS

SCENARIO 1B

10.0%



► **DEMOGRAPHICS**
SCENARIO 1B

Total Population:	215,363	Ideal Trustee Area Size:	43,073	Variance:	10.0%
--------------------------	----------------	---------------------------------	---------------	------------------	--------------

TRUSTEE AREA	Trustee Area 1		Trustee Area 2		Trustee Area 3		Trustee Area 4		Trustee Area 5	
	TP*	CVAP**	TP	CVAP	TP	CVAP	TP	CVAP	TP	CVAP
Population	44,997	28,359	44,854	34,508	43,129	26,535	41,685	29,007	40,698	26,777
Population Variance	4.5%	N/A	4.1%	N/A	0.1%	N/A	-3.2%	N/A	-5.5%	N/A
Hispanic/Latino	29.5%	19.8%	23.9%	20.4%	42.9%	32.2%	16.8%	11.5%	52.6%	39.2%
White	41.8%	55.5%	49.9%	56.0%	40.9%	55.4%	50.2%	63.1%	34.3%	50.8%
Black/African American	5.0%	6.0%	2.4%	2.1%	1.8%	2.8%	2.2%	2.6%	1.7%	1.7%
American Indian/Alaska Native	0.6%	0.4%	0.4%	0.1%	0.5%	0.5%	0.2%	0.4%	0.6%	0.4%
Asian	14.3%	11.7%	16.9%	17.5%	8.7%	6.5%	22.9%	18.9%	6.2%	6.2%
Native Hawaiian/Other Pacific Islander	1.0%	1.0%	0.5%	0.1%	0.6%	0.2%	0.2%	0.3%	0.3%	0.1%
Other	0.7%	N/A	0.6%	N/A	0.6%	N/A	0.7%	N/A	0.4%	N/A
Two or More Races	7.2%	5.5%	5.5%	3.7%	4.1%	2.4%	6.8%	3.2%	3.8%	1.5%

▶ TRUSTEE AREA PROCESS

DATE	ACTIVITY
October 26, 2021	Board Meeting: Presentation on Evaluation of Existing Voting Areas Receive Input on Potential Adjustments
November	Cooperative Strategies prepares potential maps of adjusted Voting Areas
November	Draft Maps Posted to Yolo County Office of Education Website
December 14, 2021	Board Meeting: Review Initial Scenarios and Provide Input
December - January	Cooperative Strategies revises scenarios based on Board and Public Input
January 11, 2022	Board Meeting: Review Maps and Conduct Public Hearing
January	Cooperative Strategies revises scenarios based on Board and Public Input
February 15, 2022	Board Meeting: Review Maps and Conduct Public Hearing
February 15-22	Cooperative Strategies revises scenarios based on Board and Public Input
February 25, 2022	Board Meeting: Review Maps and Conduct Public Hearing Board Selection of Map
	Cooperative Strategies sends Final Trustee Areas Map to the County Registrars of Voters.



QUESTIONS

RESOLUTION NO. 21-22/28

**RESOLUTION OF THE YOLO COUNTY COMMITTEE
ON SCHOOL DISTRICT ORGANIZATION
APPROVING ADJUSTED TRUSTEE AREA BOUNDARIES FOR THE
YOLO COUNTY BOARD OF EDUCATION**

WHEREAS, pursuant to Education Code section 1000, the Yolo County Board of Education (“BOE”) uses a by-trustee area election process to elect its governing board members; and

WHEREAS, Education Code section 1002(b) requires County Committees on School District Organization (“County Committee”) to approve adjusted trustee area boundaries for the County Board of Education following each decennial federal census using population figures validated by the Population Research Unit of the Department of Finance; and

WHEREAS, the adjustments shall ensure that the population of each trustee area is proportional pursuant to Education Code section 1002(a); and

WHEREAS, the County Committee has reviewed several adjusted trustee area boundary plans and now wishes to take action to approve a final adjusted map plan pursuant to Education Code section 1002(b); and

WHEREAS, the County Committee and its consultants have thoroughly reviewed Plan ___ and has insured that it meets the population criteria set forth in Education Code section 1002(a).

NOW THEREFORE, be it resolved by the Yolo County Committee on School District Organization as follows:

1. That the above recitals are true and correct.
2. That the County Committee hereby approves Plan ___.
3. That the Chief Executive Officer of the County Committee and/or his designee take all actions necessary to implement the adjusted trustee area boundaries prior to the next regularly scheduled Yolo County Office of Education Governing Board Member election.

ADOPTED, SIGNED AND APPROVED this 25th day of February, 2022.

President of the Yolo County Committee
on School District Organization

I, Garth Lewis, Clerk of the Yolo County Committee on School District Organization, do hereby certify that the foregoing Resolution was adopted by the County Committee at a meeting of said Committee held on the 25th day of February, 2022, and that it was so adopted by the following vote:

AYES:

NOES:

ABSTAIN:

ABSENT:

Clerk of the Yolo County Committee
on School District Organization

EXHIBIT “A”

REVISED TRUSTEE AREA PLAN ADJUSTED POST-2020 CENSUS

4. ADJOURNMENT
