



**YOLO COUNTY COMMITTEE ON SCHOOL DISTRICT
ORGANIZATION MEETING**

12/14/2021 06:00 PM

YOLO COUNTY OFFICE OF EDUCATION - Woodland Conference Room - 1280
Santa Anita Court, Suite 120, Woodland, CA 95776 &
ZOOM VIDEO CONFERENCING
Open Session - 6:00 PM (Approximate)

AGENDA

The Yolo County Office of Education's vision is to be a model of excellence in educational service, innovation, and impact.

BOARD MEMBERS

Matt Taylor, President
Melissa Moreno, Vice President
Carol Souza Cole
Shelton Yip
Tico Zendejas

This meeting is being agendized to allow Board members, staff and the public to participate in a hybrid meeting via in person at the Yolo County Office of Education and by Zoom video conferencing. If attendees join the meeting in person, please adhere to the COVID-19 state-mandated guidance which includes social distancing and wearing masks.

Webinar option for public to view the meeting:

OPTION 1: COMPUTER: Using a computer or Mobile Phone:

Please click the link below to join the webinar:

<https://ycoe.zoom.us/j/94246606416>

(<https://simbli.eboardsolutions.com/SU/jEscERaRvFplusslsh7WeZGkKdiQ==>)

OPTION 2: PHONE: Using a traditional phone or cell phone:

Or One tap mobile :

US: +16699006833,,94246606416# or +12532158782,,94246606416#

Or Telephone:

Dial(for higher quality, dial a number based on your current location):

US: +1 669 900 6833 or +1 253 215 8782 or +1 346 248 7799 or +1 301 715 8592 or
+1 312 626 6799 or +1 929 205 6099
Webinar ID: 942 4660 6416

Further instructions on how to submit your public comments can be found in the *Public Comment* section of this agenda.

1. OPENING PROCEDURES

5

1. Call to Order and Roll Call

6

2. Pledge of Allegiance 7
3. Approval of Agenda 8
Motion to approve Agenda.
4. Public Comment 9

This item is placed on the agenda for the purpose of providing visitors the opportunity to address the Board on any item(s) of business that does not appear on the formal agenda. You may request recognition by completing the form provided at the door.

Visitors may also request recognition from the chairperson, to address the Board concerning an item on the agenda by completing the form provided at the door.

The Board reserves the right to establish a time limit on these discussions, or to refer them to the next regular meeting for further deliberation.

For those individuals who wish to make a make a public comment, please do so in the following manner:

- *If you are joining the meeting via Zoom and wish to make a comment on an item, press the "raise a hand" button or Zoom chat.*

- *You may also make public comment online by google form:*

http://bit.ly/Board_Comments

- *Please submit your google form by the Board meeting date. A moderator for the meeting will read your comments for the record.*

-

- *In person at the Yolo County Office of Education, 1280 Santa Anita Court, Suite 120 in the Woodland Conference Room. Please wear a mask and adhere to social distancing rules.*

Comments may not exceed three (3) minutes.

2. CONSENT AGENDA

10

These items are expected to be routine and non-controversial. They will be acted upon by the Board at one time without discussion unless a Trustee or citizen requests that an item(s) be removed for discussion and separate consideration. In that case the designated item(s) will be considered following approval of the remaining items:

Approval of Minutes:

a. October 26, 2021 Yolo County Committee on School District Organization Meeting

3. Discussion and Possible Action 14

1. Review and Possible Approval of Resolution for Redistricting on Yolo COE Redistricting Maps 15

The Board to consider adoption of one (1) proposed map and resolution at this meeting. Approved changes to the Yolo COE trustee area map would take effect for the November 2022 election (and its associated primaries).

4. ADJOURNMENT 32

AGENDA PACKETS ARE AVAILABLE FOR REVIEW AT THE FOLLOWING LOCATIONS:

- Four calendar days prior to the meeting, a full Board packet is available for review at the office of the Yolo County Office of Education Reception Desk, 1280 Santa Anita Court, Suite #100, Woodland (8:00 a.m. - 5 p.m., Monday through Friday - excluding County Office of Education holidays).
- Agenda documents distributed to the Board less than 72 hours before the meeting will be made available at the office of the Yolo County Office of Education Reception Desk, 1280 Santa Anita Court, Suite #100, Woodland (8:00 a.m. - 5:00 p.m., Monday through Friday - excluding County Office of Education holidays). [Government Code section 54957.5]
- Board Agendas are posted outside the YCOE Administrative Office building at 1280 Santa Anita Court, Suite #100 and #120, in weather-protected glass cases.
- Four (4) calendar days prior to the meeting, a full Board packet is available for review on the Yolo County Office of Education website: www.ycoe.org
- The Yolo County Office of Education does not discriminate against persons with disabilities and is an accessible facility. Persons with disabilities who wish to attend this meeting and require assistance in order to participate should contact the Executive Assistant to the Superintendent at (530) 668-3702 at least 24 hours in advance of the meeting to make reasonable arrangements to ensure accessibility. Language translation services and American Sign Language (ASL) interpreters will be provided with a minimum notice of three (3) business days prior to the meeting.



1. OPENING PROCEDURES



1. 1. Call to Order and Roll Call



1. 2. Pledge of Allegiance

1. 3. Approval of Agenda

Recommendation

Motion to approve Agenda.

1. 4. Public Comment

Quick Summary / Abstract

This item is placed on the agenda for the purpose of providing visitors the opportunity to address the Board on any item(s) of business that does not appear on the formal agenda. You may request recognition by completing the form provided at the door.

Visitors may also request recognition from the chairperson, to address the Board concerning an item on the agenda by completing the form provided at the door.

The Board reserves the right to establish a time limit on these discussions, or to refer them to the next regular meeting for further deliberation.

For those individuals who wish to make a make a public comment, please do so in the following manner:

- *If you are joining the meeting via Zoom and wish to make a comment on an item, press the "raise a hand" button or Zoom chat.*
- *You may also make public comment online by google form:*

http://bit.ly/Board_Comments

- *Please submit your google form by the Board meeting date. A moderator for the meeting will read your comments for the record.*
- *In person at the Yolo County Office of Education, 1280 Santa Anita Court, Suite 120 in the Woodland Conference Room. Please wear a mask and adhere to social distancing rules.*

Comments may not exceed three (3) minutes.

2. CONSENT AGENDA

Quick Summary / Abstract

These items are expected to be routine and non-controversial. They will be acted upon by the Board at one time without discussion unless a Trustee or citizen requests that an item(s) be removed for discussion and separate consideration. In that case the designated item(s) will be considered following approval of the remaining items:

Approval of Minutes:

- a. October 26, 2021 Yolo County Committee on School District Organization Meeting

Supporting Documents



10-26-21 Sp. Mtg. Minutes

YOLO COUNTY COMMITTEE ON SCHOOL DISTRICT ORGANIZATION
Special Meeting: October 26, 2021
MINUTES

1.1 OPENING PROCEDURES

1.1 Call to Order and Roll Call. The Yolo County Board of Education met on October 26, 2021, 2021 at 5:40 p.m. in a hybrid Special meeting session in person and on a Zoom conference call. Board Members present were: Shelton Yip and Carol Souza Cole in person. By Zoom: Matt Taylor, Melissa Moreno. Tico Zendejas was absent. President Matt Taylor presided. Superintendent Garth Lewis was present. (Roll Call held).

1.2 Pledge of Allegiance

1.3 Approval of Agenda.
Motion to approve agenda.

MOTION: Moreno **SECOND:** Souza Cole **AYES:** Moreno,
Souza Cole, Taylor, Yip **NOES:** None **ABSENT:** Zendejas

ROLL CALL VOTE:

YIP: **AYE**

TAYLOR: **AYE**

MORENO: **AYE**

SOUZA COLE: **AYE**

ZENDEJAS: **ABSENT**

1.4 Public Comment.
None

2.0 INFORMATION ITEMS

2.1 Report from legal counsel and demographer on impact of 2020 census on current trustee area map configuration.

David Soldani, Attorney from Atkinson Andelson, etc. and Susan Miller, Demographer presented the Power Point “2020 Census and Redistricting.”

Items reviewed and discussed included:

- District demographics
 - 2020 Census data
 - Hispanic Citizen Voting Age Population Estimates
 - Current Trustee Areas
 - Total Population vs. Citizen Voting Age Population
- Considerations in Voting areas

Mr. Soldani commented that post census redistricting we don't create a new map. The process is meant to fine tune and to keep pace with population. Opportunity to reduce population deviation and we plan to come back with draft map with smaller population deviation. There will need to be a public hearing and comments from public to adopt map. The deadline is prior to February 2022.

President Matt Taylor left zoom at 5:50 PM and returned at 5:55 PM
Vice President Melissa Moreno chaired meeting.

Trustee Souza Cole requested to see a overlap of the county board of supervisors district and existing yolo county office of education districts and if they are similar? Is it possible to do the overlay. There could be a \$1,000 difference in cost and we don't have the overlay this evening. Trustee Souza Cole would like to see overlay at next meeting so it is clear and they can understand the boundaries being adopted.

Questions also included direction of certain boundaries and where would the districts are on the map. Trustee Souza Cole stated that the Board would need to know where adjustments might occur. Is it possible to see a detailed street level map of current boundaries. Ms. Miller will research and check with elections.

Vice President Moreno stated that she expected at this meeting to be able to look at the previous map and compare to the current map. Mr. Soldani stated that any adjustment is going to be minor. Trustee Souza Cole would like the demographer to provide data on where population changes occur so they can gain a clear understanding of the analysis. Mr. Soldani clarified the need to make adjustments to map and coming back to committee to show adjusted map with discrepancy. Sounds like committee members need a more detailed level input based on looking at street level views and tracking with adjusted map. Ms. Miller stated that the maps will be tweaked a bit but it is not a significant amount with the current trustee areas.

Trustee Taylor would like to see an overlay that shows board of supervisors graphically and school district areas. How much are we breaking up in county office of ed districts. Do they match with district boundaries? Interested in preserving community of interest and not chopping it up on the maps.

Ms. Miller is going to is come back to Board with 4 or 5 options. Board members comments will be considered. Will show where map overlaps with county and school districts. Trustee Souza Cole is interested in the Hispanic citizen voting age population and seeing data for population. Mr. Soldani stated that we are drawing districts based on population and not on voting age. He stated that in each area they have shown racial demographics but on maps they focus on most highly impacted group dependent on federal voting rights.

Vice President Moreno asked how many more meetings are need to discuss mapping? Mr. Soldani state they need to draft maps and agendize dates soon for

one more meeting to discuss and take action on the maps with a public hearing. Hope to have a decision by December or January.

Trustee Yip also commented that Mr. Soldani gave advice for the Board not to accept board of supervisors map since they have different roles to fulfill.

4.0 **ADJOURNMENT.** The meeting adjourned at 6:35 p.m.

MOTION: Yip **SECOND:** Souza Cole **AYES:** Yip, Souza Cole, Taylor, Moreno **NOES:** None **ABSENT:** Zendejas

ROLL CALL VOTE:
JIMENEZ: **AYE**
TAYLOR: **AYE**
MORENO: **AYE**
SOUZA COLE: **AYE**
ZENDEJAS: **ABSENT**

Garth Lewis, Superintendent

3. Discussion and Possible Action

3. 1. Review and Possible Approval of Resolution for Redistricting on Yolo COE Redistricting Maps

Description

Attached are four scenarios in pdf format for the Trustees' consideration.

In addition, to afford the Trustees an understanding of these scenarios as they relate to overlapping districts, they can use the following link to facilitate that review:

<https://www.google.com/maps/d/u/0/edit?mid=1dYUgz4nkB4E64x6cY1nlelWlxXqvaOOi&usp=sharing>
(<https://simbli.eboardsolutions.com/SU/r2mUTM0slshNTbhj7QLgci5QQ==>)

The page can only be accessed via the link. It includes the current TAs, the four scenarios, the COE boundaries, feeder districts and Yolo County BOS areas.


Parameters of the maps:

- a. Keep all of Winters' school district attendance area intact to preserve community of interest (Winters is currently split under the current Trustee boundaries. Just want to make sure the Trustees understand the current state)
- b. Take into consideration all school districts' catchment areas (overlay school districts' boundaries)
- c. 1 map, just below the 10% variance allowance,
- d. 2 maps with realignment of Trustee boundaries to be within variance of 3-7%; and
- e. 1 map with close to zero variance

Recommendation

The Board to consider adoption of one (1) proposed map and resolution at this meeting. Approved changes to the Yolo COE trustee area map would take effect for the November 2022 election (and its associated primaries).


Supporting Documents

 YoloCounty_Scenario1

 YoloCounty_Scenario2

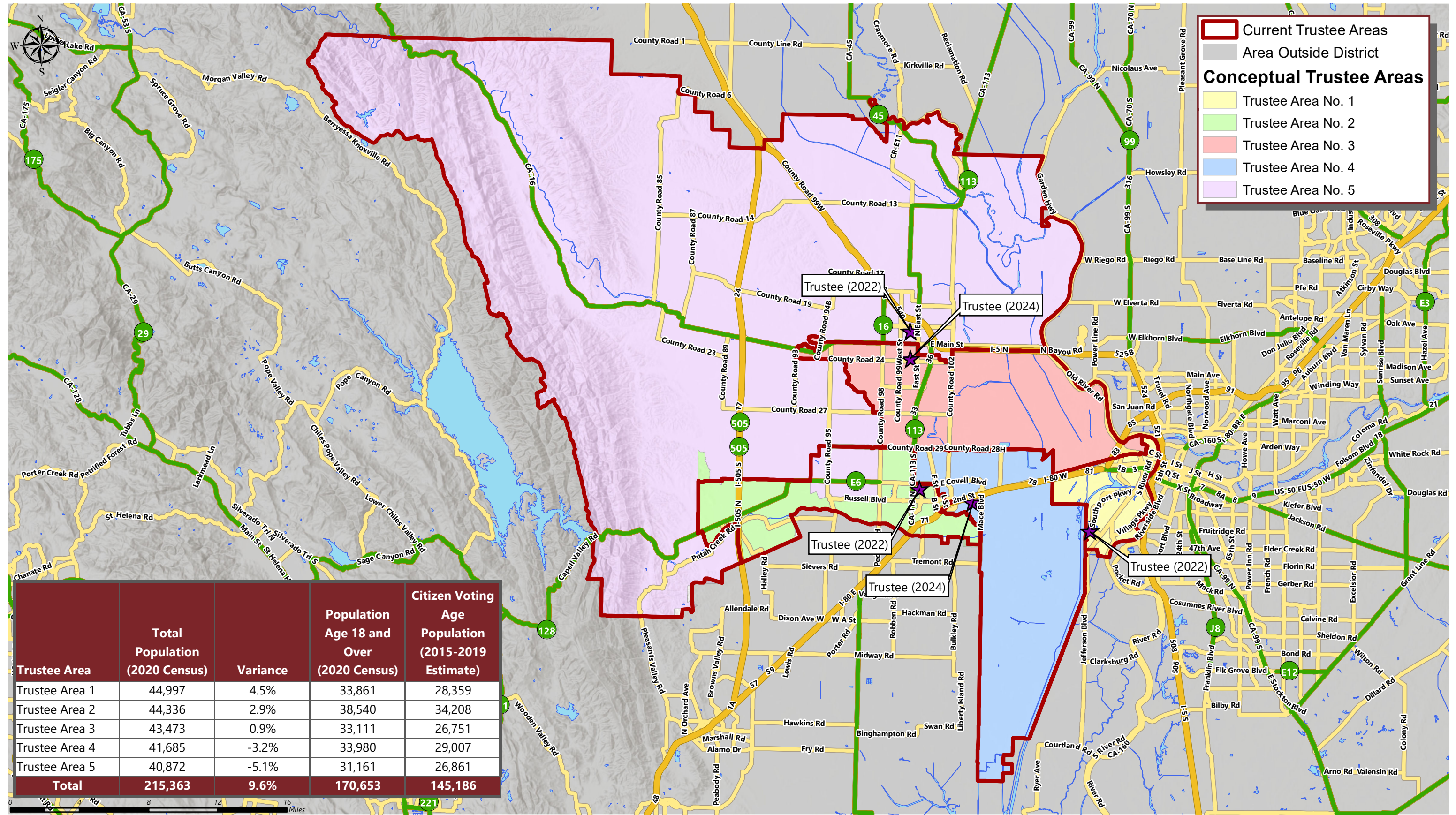
 YoloCounty_Scenario3

 YoloCounty_Scenario4

 Resolution for Redistricting - YCOE - County Committee

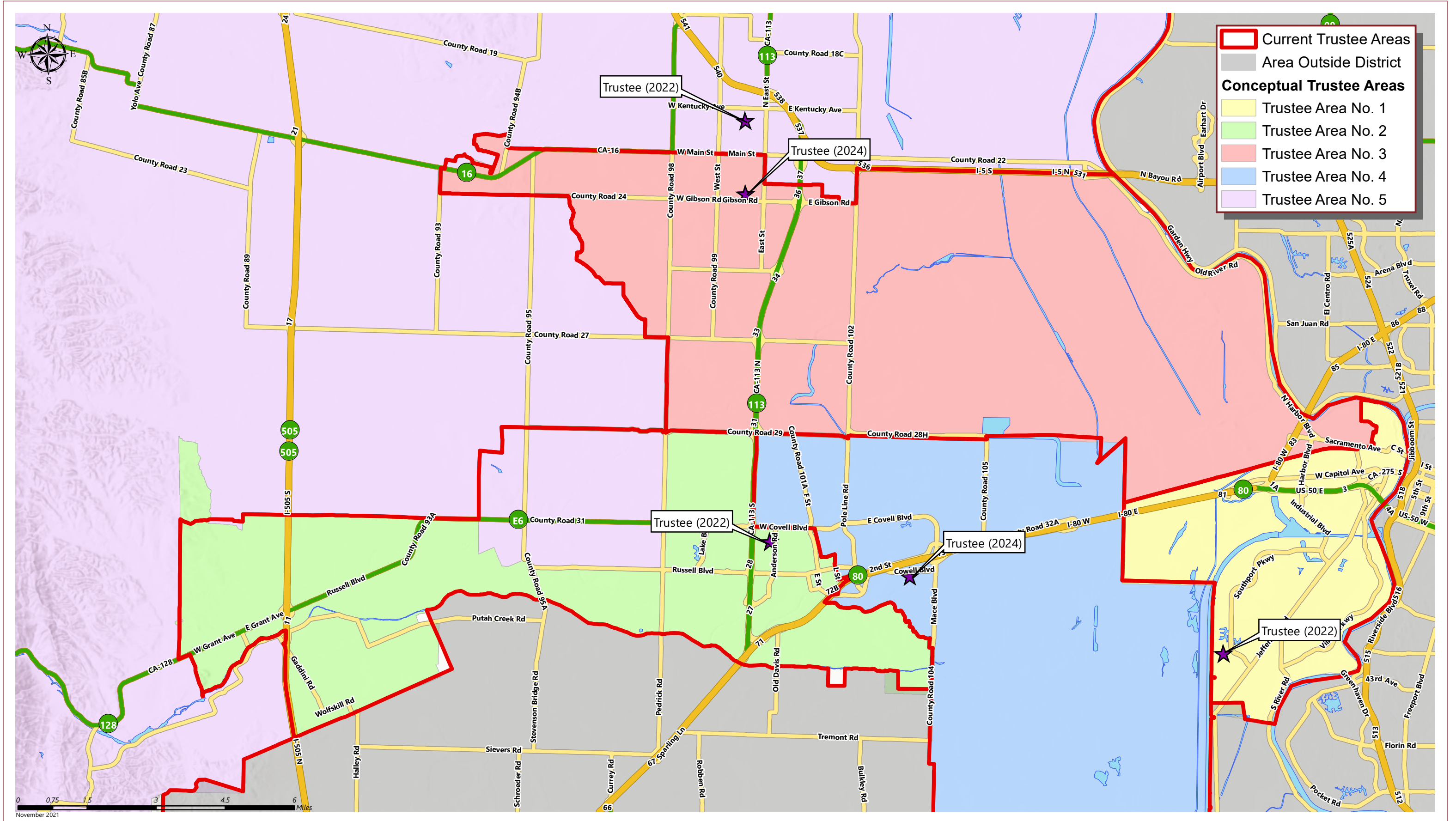
Contact Person

David Soldani, Partner, Atkinson, Andelson, Loya, Ruud & Romo and Susan Miller, Senior Associate Director, Plan & Fund, Cooperative Strategies will present this item.



Trustee Area	Total Population (2020 Census)	Variance	Population Age 18 and Over (2020 Census)	Citizen Voting Age Population (2015-2019 Estimate)
Trustee Area 1	44,997	4.5%	33,861	28,359
Trustee Area 2	44,336	2.9%	38,540	34,208
Trustee Area 3	43,473	0.9%	33,111	26,751
Trustee Area 4	41,685	-3.2%	33,980	29,007
Trustee Area 5	40,872	-5.1%	31,161	26,861
Total	215,363	9.6%	170,653	145,186

November 2021



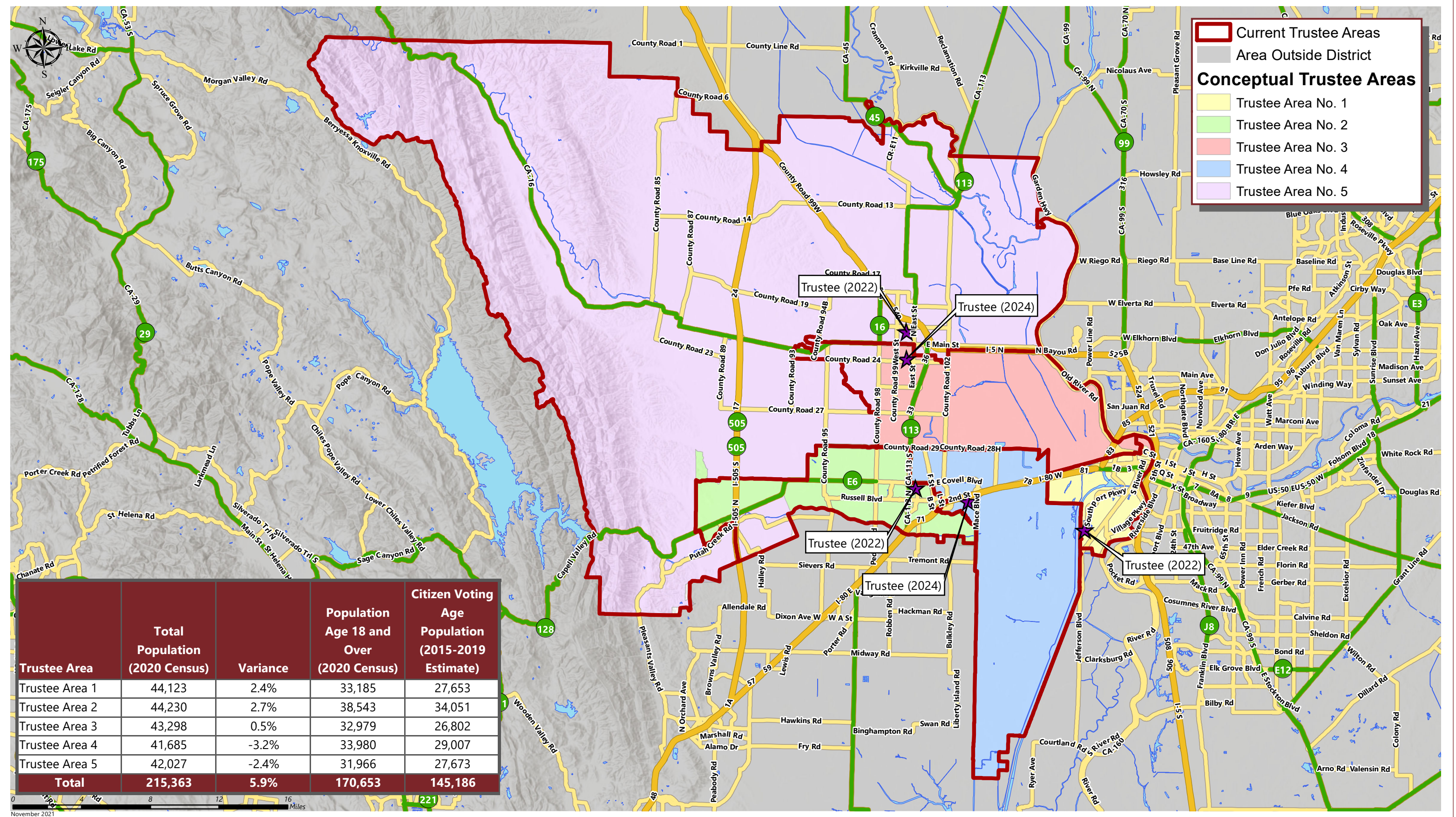
CONCEPTUAL TRUSTEE AREAS - SCENARIO 1

Total Population:	215,363	Ideal Population:	43,073	Variance:	9.6%
--------------------------	----------------	--------------------------	---------------	------------------	-------------

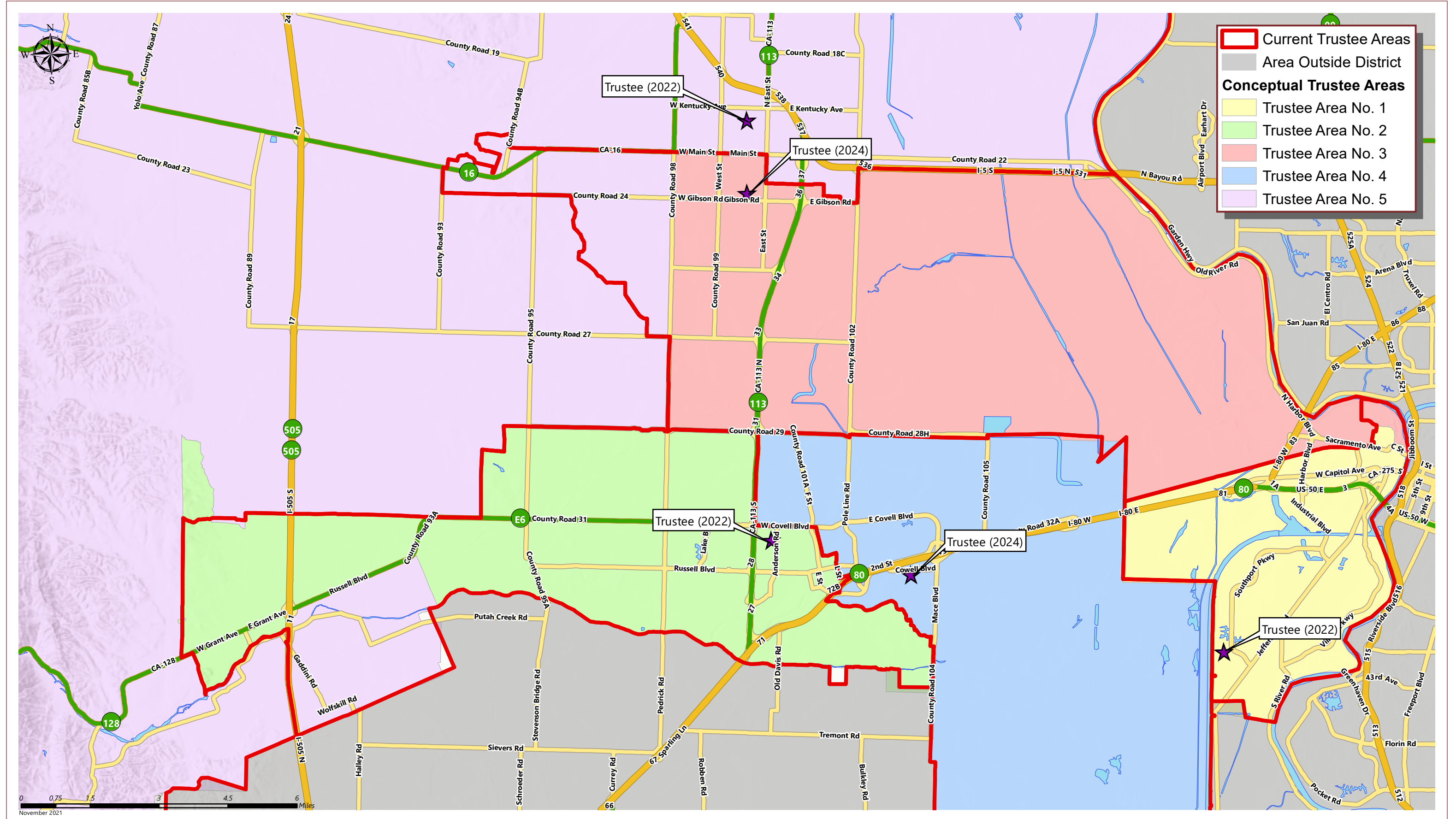
Total Population (2020 Census)					
	Trustee Area 1	Trustee Area 2	Trustee Area 3	Trustee Area 4	Trustee Area 5
Population	44,997	44,336	43,473	41,685	40,872
Population Variance	1,924	1,263	400	-1,388	-2,201
	4.5%	2.9%	0.9%	-3.2%	-5.1%
Hispanic/Latino	29.5%	24.0%	42.7%	16.8%	52.4%
White	41.8%	49.6%	41.1%	50.2%	34.6%
Black/ African American	5.0%	2.4%	1.8%	2.2%	1.7%
American Indian/ Alaska Native	0.6%	0.4%	0.5%	0.2%	0.6%
Asian	14.3%	17.0%	8.7%	22.9%	6.2%
Native Hawaiian/ Other Pacific Islander	1.0%	0.5%	0.6%	0.2%	0.3%
Other	0.7%	0.6%	0.6%	0.7%	0.4%
Two or More Races	7.2%	5.6%	4.1%	6.8%	3.8%

Population 18 and Over (2020 Census)					
	Trustee Area 1	Trustee Area 2	Trustee Area 3	Trustee Area 4	Trustee Area 5
Population	33,861	38,540	33,111	33,980	31,161
Hispanic/Latino	26.7%	22.0%	38.8%	15.5%	48.4%
White	45.5%	51.1%	45.2%	51.9%	38.7%
Black/ African American	5.2%	2.4%	1.9%	2.1%	1.7%
American Indian/ Alaska Native	0.6%	0.4%	0.5%	0.1%	0.6%
Asian	14.4%	18.0%	8.8%	24.2%	6.4%
Native Hawaiian/ Other Pacific Islander	1.1%	0.5%	0.6%	0.2%	0.3%
Other	0.6%	0.6%	0.6%	0.7%	0.4%
Two or More Races	5.9%	4.9%	3.6%	5.3%	3.4%

Citizens by Voting Age Population Estimate (2015-2019)					
	Trustee Area 1	Trustee Area 2	Trustee Area 3	Trustee Area 4	Trustee Area 5
Population	28,359	34,208	26,751	29,007	26,861
Hispanic/Latino	19.8%	20.5%	32.1%	11.5%	39.0%
White	55.5%	55.8%	55.5%	63.1%	50.9%
Black/ African American	6.0%	2.1%	2.8%	2.6%	1.7%
American Indian/ Alaska Native	0.4%	0.1%	0.5%	0.4%	0.4%
Asian	11.7%	17.5%	6.4%	18.9%	6.3%
Native Hawaiian/ Other Pacific Islander	1.0%	0.1%	0.2%	0.3%	0.1%
Other	0.0%	0.0%	0.0%	0.0%	0.0%
Two or More Races	5.5%	3.8%	2.4%	3.2%	1.5%



November 2021



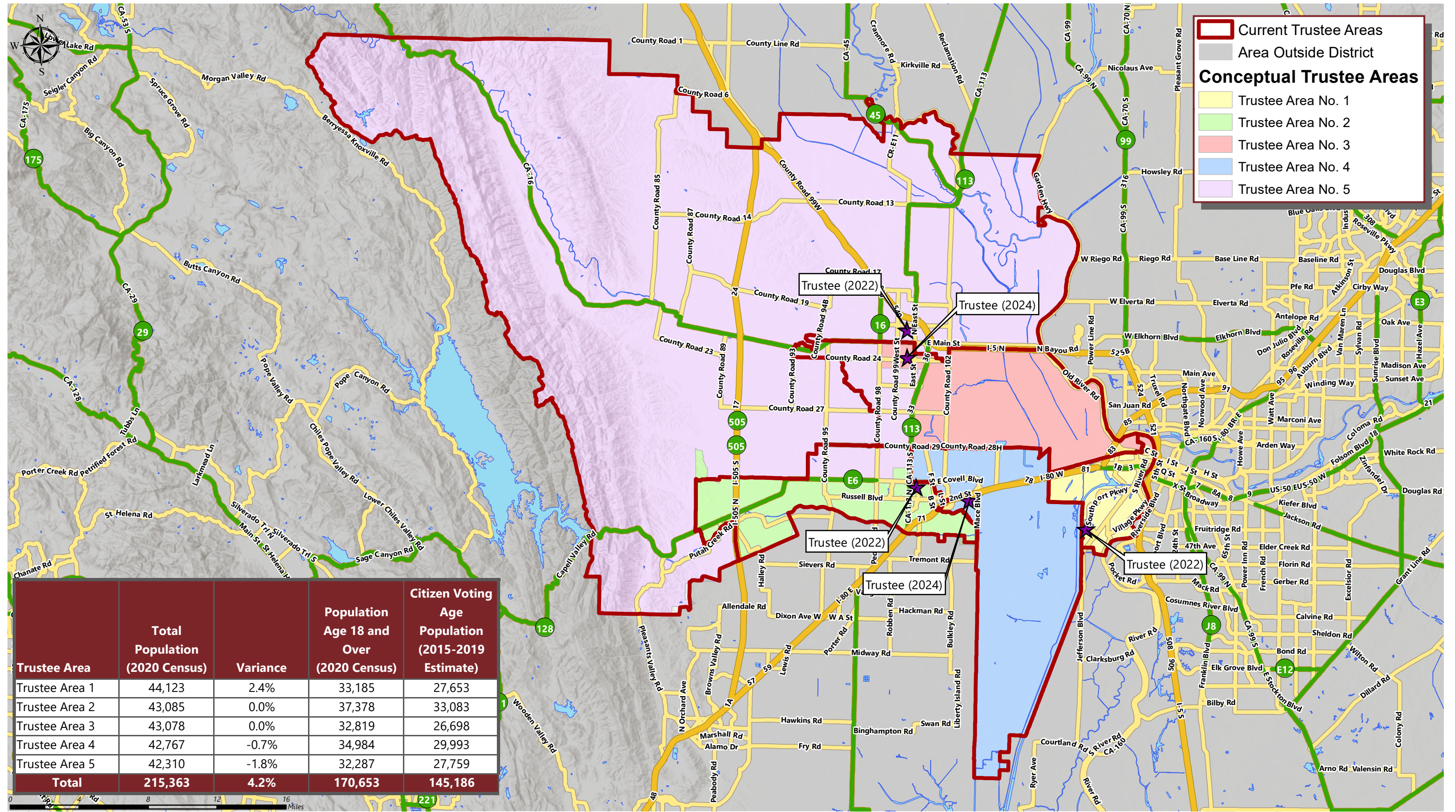
CONCEPTUAL TRUSTEE AREAS - SCENARIO 2

Total Population:	215,363	Ideal Population:	43,073	Variance:	5.9%
--------------------------	----------------	--------------------------	---------------	------------------	-------------

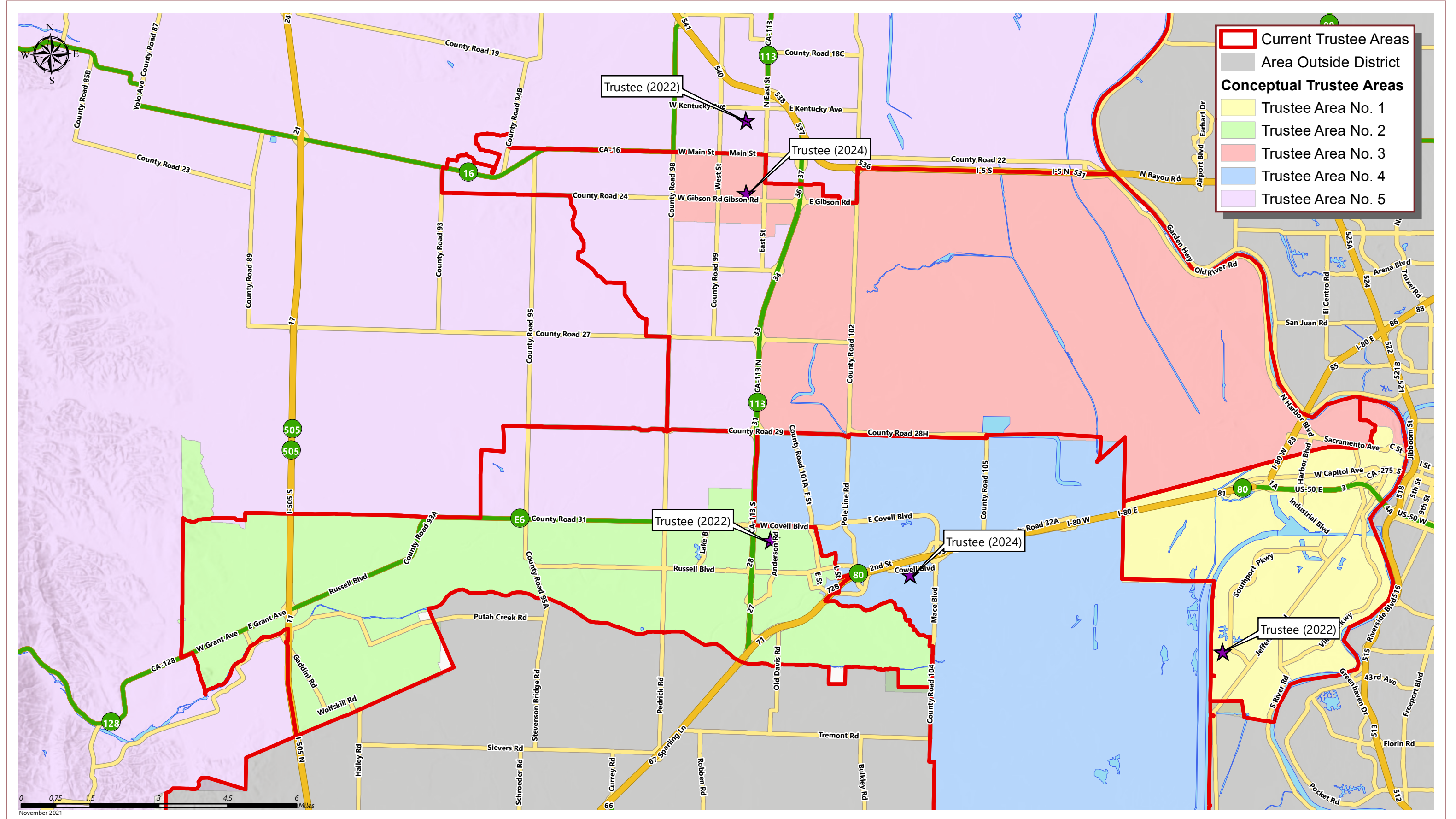
Total Population (2020 Census)					
	Trustee Area 1	Trustee Area 2	Trustee Area 3	Trustee Area 4	Trustee Area 5
Population	44,123	44,230	43,298	41,685	42,027
Population Variance	1,050	1,157	225	-1,388	-1,046
	2.4%	2.7%	0.5%	-3.2%	-2.4%
Hispanic/Latino	29.6%	23.3%	42.5%	16.8%	52.6%
White	41.6%	50.2%	40.9%	50.2%	34.5%
Black/ African American	5.0%	2.4%	1.9%	2.2%	1.7%
American Indian/ Alaska Native	0.6%	0.4%	0.5%	0.2%	0.6%
Asian	14.3%	17.1%	8.9%	22.9%	6.1%
Native Hawaiian/ Other Pacific Islander	1.0%	0.5%	0.6%	0.2%	0.3%
Other	0.7%	0.6%	0.6%	0.7%	0.4%
Two or More Races	7.2%	5.6%	4.1%	6.8%	3.9%

Population 18 and Over (2020 Census)					
	Trustee Area 1	Trustee Area 2	Trustee Area 3	Trustee Area 4	Trustee Area 5
Population	33,185	38,543	32,979	33,980	31,966
Hispanic/Latino	26.8%	21.5%	38.6%	15.5%	48.7%
White	45.4%	51.7%	45.0%	51.9%	38.5%
Black/ African American	5.1%	2.4%	2.0%	2.1%	1.8%
American Indian/ Alaska Native	0.6%	0.4%	0.5%	0.1%	0.6%
Asian	14.5%	18.0%	9.1%	24.2%	6.2%
Native Hawaiian/ Other Pacific Islander	1.1%	0.5%	0.6%	0.2%	0.3%
Other	0.6%	0.6%	0.6%	0.7%	0.4%
Two or More Races	5.9%	4.9%	3.6%	5.3%	3.4%

Citizens by Voting Age Population Estimate (2015-2019)					
	Trustee Area 1	Trustee Area 2	Trustee Area 3	Trustee Area 4	Trustee Area 5
Population	27,653	34,051	26,802	29,007	27,673
Hispanic/Latino	19.7%	19.7%	32.0%	11.5%	39.6%
White	55.8%	56.5%	54.9%	63.1%	50.6%
Black/ African American	5.8%	2.1%	3.2%	2.6%	1.8%
American Indian/ Alaska Native	0.3%	0.1%	0.7%	0.4%	0.4%
Asian	11.8%	17.7%	6.6%	18.9%	6.0%
Native Hawaiian/ Other Pacific Islander	1.1%	0.1%	0.2%	0.3%	0.1%
Other	0.0%	0.0%	0.0%	0.0%	0.0%
Two or More Races	5.6%	3.8%	2.4%	3.2%	1.4%



November 2021



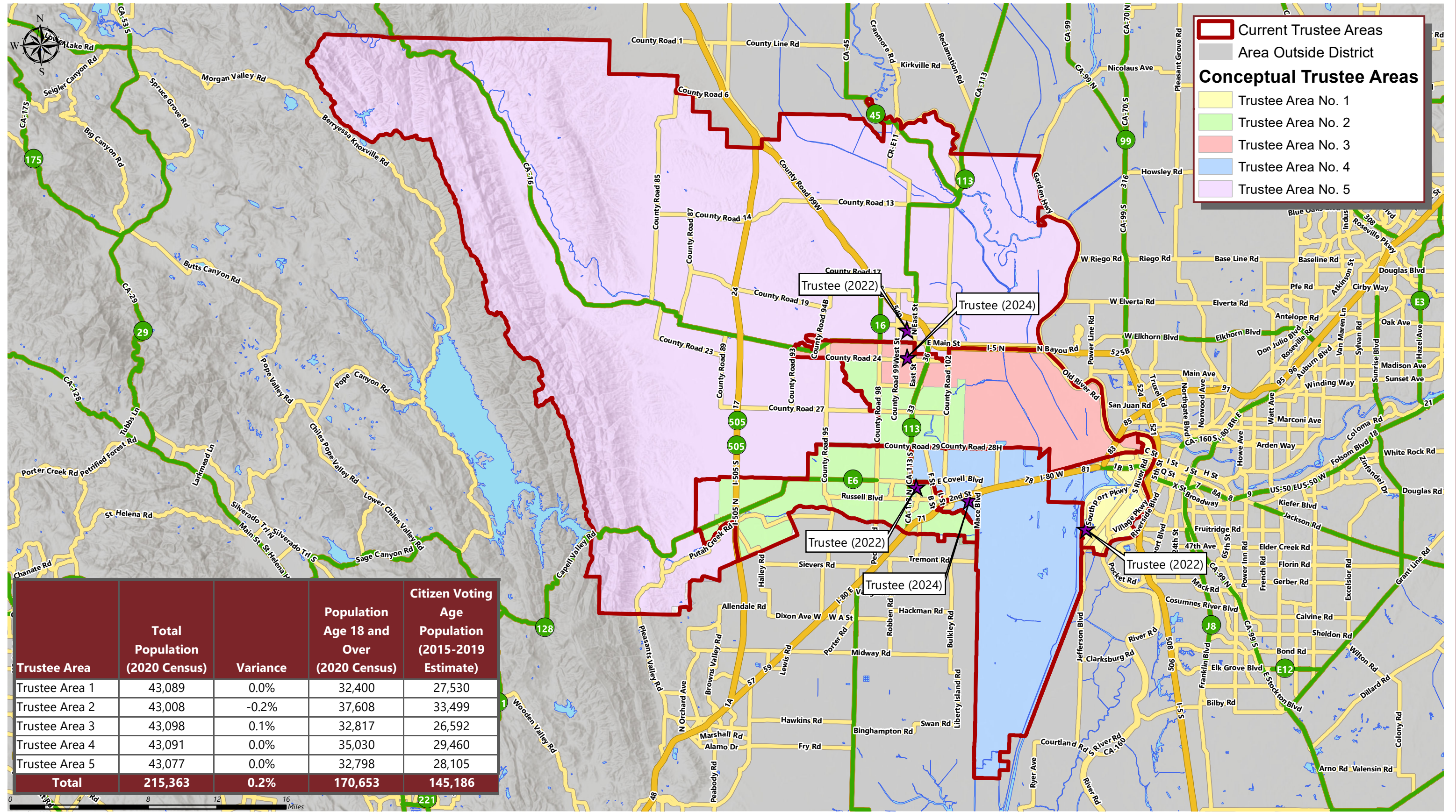
CONCEPTUAL TRUSTEE AREAS - SCENARIO 3

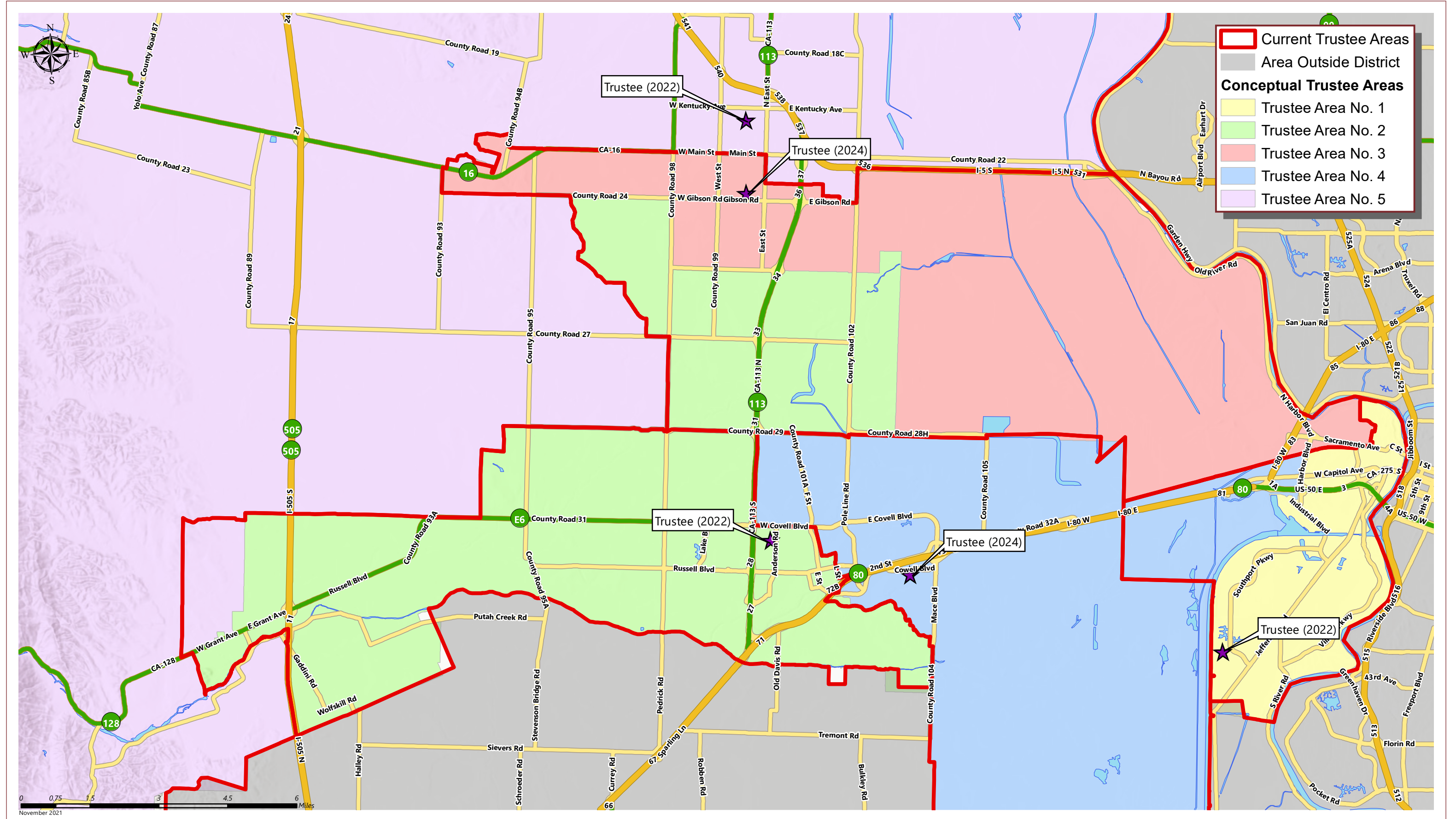
Total Population:	215,363	Ideal Population:	43,073	Variance:	4.2%
--------------------------	----------------	--------------------------	---------------	------------------	-------------

Total Population (2020 Census)					
	Trustee Area 1	Trustee Area 2	Trustee Area 3	Trustee Area 4	Trustee Area 5
Population	44,123	43,085	43,078	42,767	42,310
Population Variance	1,050	12	5	-306	-763
	2.4%	0.0%	0.0%	-0.7%	-1.8%
Hispanic/Latino	29.6%	24.0%	42.6%	17.0%	51.7%
White	41.6%	49.8%	40.8%	49.9%	35.3%
Black/ African American	5.0%	2.4%	1.9%	2.2%	1.7%
American Indian/ Alaska Native	0.6%	0.4%	0.5%	0.2%	0.6%
Asian	14.3%	16.8%	8.9%	22.9%	6.2%
Native Hawaiian/ Other Pacific Islander	1.0%	0.5%	0.6%	0.2%	0.3%
Other	0.7%	0.6%	0.6%	0.7%	0.4%
Two or More Races	7.2%	5.6%	4.1%	6.8%	3.9%

Population 18 and Over (2020 Census)					
	Trustee Area 1	Trustee Area 2	Trustee Area 3	Trustee Area 4	Trustee Area 5
Population	33,185	37,378	32,819	34,984	32,287
Hispanic/Latino	26.8%	22.0%	38.6%	15.7%	47.8%
White	45.4%	51.4%	44.9%	51.6%	39.4%
Black/ African American	5.1%	2.4%	2.0%	2.1%	1.7%
American Indian/ Alaska Native	0.6%	0.4%	0.5%	0.2%	0.6%
Asian	14.5%	17.8%	9.1%	24.2%	6.3%
Native Hawaiian/ Other Pacific Islander	1.1%	0.5%	0.6%	0.2%	0.3%
Other	0.6%	0.6%	0.6%	0.7%	0.4%
Two or More Races	5.9%	4.9%	3.6%	5.4%	3.4%

Citizens by Voting Age Population Estimate (2015-2019)					
	Trustee Area 1	Trustee Area 2	Trustee Area 3	Trustee Area 4	Trustee Area 5
Population	27,653	33,083	26,698	29,993	27,759
Hispanic/Latino	19.7%	20.4%	32.0%	12.0%	38.5%
White	55.8%	56.1%	54.8%	62.5%	51.5%
Black/ African American	5.8%	2.1%	3.2%	2.6%	1.7%
American Indian/ Alaska Native	0.3%	0.1%	0.7%	0.4%	0.4%
Asian	11.8%	17.8%	6.7%	18.5%	6.3%
Native Hawaiian/ Other Pacific Islander	1.1%	0.1%	0.2%	0.3%	0.1%
Other	0.0%	0.0%	0.0%	0.0%	0.0%
Two or More Races	5.6%	3.4%	2.4%	3.7%	1.5%





CONCEPTUAL TRUSTEE AREAS - SCENARIO 4

Total Population:	215,363	Ideal Population:	43,073	Variance:	0.2%
--------------------------	----------------	--------------------------	---------------	------------------	-------------

Total Population (2020 Census)					
	Trustee Area 1	Trustee Area 2	Trustee Area 3	Trustee Area 4	Trustee Area 5
Population	43,089	43,008	43,098	43,091	43,077
Population Variance	16	-65	25	18	4
	0.0%	-0.2%	0.1%	0.0%	0.0%
Hispanic/Latino	28.9%	22.3%	42.8%	17.6%	52.9%
White	42.1%	50.2%	41.0%	49.8%	34.5%
Black/ African American	4.8%	2.5%	1.8%	2.5%	1.6%
American Indian/ Alaska Native	0.6%	0.4%	0.5%	0.2%	0.6%
Asian	14.6%	17.9%	8.7%	22.2%	5.9%
Native Hawaiian/ Other Pacific Islander	1.0%	0.5%	0.6%	0.2%	0.3%
Other	0.7%	0.6%	0.6%	0.7%	0.4%
Two or More Races	7.3%	5.7%	4.1%	6.7%	3.9%

Population 18 and Over (2020 Census)					
	Trustee Area 1	Trustee Area 2	Trustee Area 3	Trustee Area 4	Trustee Area 5
Population	32,400	37,608	32,817	35,030	32,798
Hispanic/Latino	26.2%	20.6%	38.8%	16.1%	0.0%
White	45.7%	51.7%	45.1%	51.7%	38.5%
Black/ African American	5.0%	2.5%	1.9%	2.4%	1.7%
American Indian/ Alaska Native	0.6%	0.4%	0.5%	0.2%	0.6%
Asian	14.8%	18.7%	8.9%	23.4%	6.1%
Native Hawaiian/ Other Pacific Islander	1.0%	0.5%	0.6%	0.2%	0.3%
Other	0.6%	0.6%	0.6%	0.7%	0.4%
Two or More Races	6.0%	4.9%	3.6%	5.3%	3.4%

Citizens by Voting Age Population Estimate (2015-2019)					
	Trustee Area 1	Trustee Area 2	Trustee Area 3	Trustee Area 4	Trustee Area 5
Population	27,530	33,499	26,592	29,460	28,105
Hispanic/Latino	19.7%	20.1%	32.2%	11.5%	39.0%
White	55.3%	55.5%	55.4%	63.4%	51.3%
Black/ African American	6.1%	2.1%	2.8%	2.6%	1.7%
American Indian/ Alaska Native	0.5%	0.1%	0.5%	0.4%	0.4%
Asian	11.9%	18.3%	6.5%	18.5%	5.9%
Native Hawaiian/ Other Pacific Islander	1.1%	0.1%	0.2%	0.3%	0.1%
Other	0.0%	0.0%	0.0%	0.0%	0.0%
Two or More Races	5.4%	3.8%	2.4%	3.4%	1.5%

RESOLUTION NO. _____

**RESOLUTION OF THE YOLO COUNTY COMMITTEE
ON SCHOOL DISTRICT ORGANIZATION
APPROVING ADJUSTED TRUSTEE AREA BOUNDARIES FOR THE
YOLO COUNTY BOARD OF EDUCATION**

WHEREAS, pursuant to Education Code section 1000, the Yolo County Board of Education (“BOE”) uses a by-trustee area election process to elect its governing board members; and

WHEREAS, Education Code section 1002(b) requires County Committees on School District Organization (“County Committee”) to approve adjusted trustee area boundaries for the County Board of Education following each decennial federal census using population figures validated by the Population Research Unit of the Department of Finance; and

WHEREAS, the adjustments shall ensure that the population of each trustee area is proportional pursuant to Education Code section 1002(a); and

WHEREAS, the County Committee has reviewed several adjusted trustee area boundary plans and now wishes to take action to approve a final adjusted map plan pursuant to Education Code section 1002(b); and

WHEREAS, the County Committee and its consultants have thoroughly reviewed Plan ___ and has insured that it meets the population criteria set forth in Education Code section 1002(a).

NOW THEREFORE, be it resolved by the Yolo County Committee on School District Organization as follows:

1. That the above recitals are true and correct.
2. That the County Committee hereby approves Plan ___.
3. That the Chief Executive Officer of the County Committee and/or his designee take all actions necessary to implement the adjusted trustee area boundaries prior to the next regularly scheduled Yolo County Office of Education Governing Board Member election.

ADOPTED, SIGNED AND APPROVED this ___ day of _____, 2021.

President of the Yolo County Committee
on School District Organization

I, _____, Clerk of the Yolo County Committee on School District Organization, do hereby certify that the foregoing Resolution was adopted by the County Committee at a meeting of said Committee held on the ____ day of _____, 2021, and that it was so adopted by the following vote:

AYES:

NOES:

ABSTAIN:

ABSENT:

Clerk of the Yolo County Committee
on School District Organization

EXHIBIT "A"

REVISED TRUSTEE AREA PLAN ADJUSTED POST-2020 CENSUS

4. ADJOURNMENT
