



**YOLO COUNTY COMMITTEE ON SCHOOL DISTRICT
ORGANIZATION SPECIAL MEETING**

10/26/2021 05:30 PM

YOLO COUNTY OFFICE OF EDUCATION - Woodland Conference Room - 1280
Santa Anita Court, Suite 120, Woodland, CA 95776 &
ZOOM VIDEO CONFERENCING
Open Session - 5:30 PM

AGENDA

The Yolo County Office of Education's vision is to be a model of excellence in educational service, innovation, and impact.



Scan the above QR code with your phone to view this meeting agenda on your phone.

BOARD MEMBERS

Matt Taylor, President
Melissa Moreno, Vice President
Carol Souza Cole
Shelton Yip
Tico Zendejas

This meeting is being agendized to allow Board members, staff and the public to participate in a hybrid meeting via in person at the Yolo County Office of Education and by Zoom video conferencing. If attendees join the meeting in person, please adhere to the COVID-19 state-mandated guidance which includes social distancing and wearing masks.

Webinar option for public to view the meeting:

OPTION 1: COMPUTER: Using a computer or Mobile Phone:

Please click the link below to join the webinar:

<https://ycoe.zoom.us/j/94246606416>

(<https://simbli.eboardsolutions.com/SU/jEscERaRvFplusslsh7WeZGkKdiQ==>)

OPTION 2: PHONE: Using a traditional phone or cell phone:

Or One tap mobile :

US: +16699006833,,94246606416# or +12532158782,,94246606416#

Or Telephone:

Dial(for higher quality, dial a number based on your current location):

US: +1 669 900 6833 or +1 253 215 8782 or +1 346 248 7799 or +1 301 715 8592 or +1 312 626 6799 or +1 929 205 6099

Webinar ID: 942 4660 6416

1. OPENING PROCEDURES 5

1. Call to Order and Roll Call 6

2. Pledge of Allegiance 7

3. Approval of Agenda 8
Motion to approve Agenda.

4. Public Comment 9

This item is placed on the agenda for the purpose of providing visitors the opportunity to address the Board on any item(s) of business that does not appear on the formal agenda. You may request recognition by completing the form provided at the door.

Visitors may also request recognition from the chairperson, to address the Board concerning an item on the agenda by completing the form provided at the door.

The Board reserves the right to establish a time limit on these discussions, or to refer them to the next regular meeting for further deliberation.

For those individuals who wish to make a make a public comment, please do so in the following manner:

- *If you are joining the meeting via Zoom and wish to make a comment on an item, press the "raise a hand" button or Zoom chat.*

- *You may also make public comment online by google form:*

http://bit.ly/Board_Comments

- *Please submit your google form by the Board meeting date. A moderator for the meeting will read your comments for the record.*

-

- *In person at the Yolo County Office of Education, 1280 Santa Anita Court, Suite 120 in the Woodland Conference Room. Please wear a mask and adhere to social distancing rules.*

Comments may not exceed three (3) minutes.

2. INFORMATION ITEMS 10

1. Report from District legal counsel and demographer on impact of 2020 census on current trustee area map configuration. 11
In this presentation, legal counsel and demographer will share the results of analysis of the current trustee area map against the newly-released 2020 Census Data and will have a recommendation for next steps as a result of the change to the population variance.

3. ADJOURNMENT 12

AGENDA PACKETS ARE AVAILABLE FOR REVIEW AT THE FOLLOWING LOCATIONS:

- For disability related accommodations, please contact the Yolo County Office of Education - Superintendent's office at (530) 668-3702, at least 24 hours working days prior to the scheduled meeting.
- For translation services, if joining the meeting via Zoom, please check the box to Enable Language Interpretation for the meeting.
- One (1) calendar days prior to the meeting, a full Board packet is available for review on the Yolo County Office of Education website: www.ycoe.org

1. OPENING PROCEDURES

1. 1. Call to Order and Roll Call

1. 2. Pledge of Allegiance

1. 3. Approval of Agenda

Recommendation

Motion to approve Agenda.

1. 4. Public Comment

Quick Summary / Abstract

This item is placed on the agenda for the purpose of providing visitors the opportunity to address the Board on any item(s) of business that does not appear on the formal agenda. You may request recognition by completing the form provided at the door.

Visitors may also request recognition from the chairperson, to address the Board concerning an item on the agenda by completing the form provided at the door.

The Board reserves the right to establish a time limit on these discussions, or to refer them to the next regular meeting for further deliberation.

For those individuals who wish to make a make a public comment, please do so in the following manner:

- *If you are joining the meeting via Zoom and wish to make a comment on an item, press the "raise a hand" button or Zoom chat.*
- *You may also make public comment online by google form:*

http://bit.ly/Board_Comments

- *Please submit your google form by the Board meeting date. A moderator for the meeting will read your comments for the record.*
- *In person at the Yolo County Office of Education, 1280 Santa Anita Court, Suite 120 in the Woodland Conference Room. Please wear a mask and adhere to social distancing rules.*

Comments may not exceed three (3) minutes.

2. INFORMATION ITEMS

2. 1. Report from District legal counsel and demographer on impact of 2020 census on current trustee area map configuration.

Quick Summary / Abstract

In this presentation, legal counsel and demographer will share the results of analysis of the current trustee area map against the newly-released 2020 Census Data and will have a recommendation for next steps as a result of the change to the population variance.



► **2020 CENSUS AND
REDISTRICTING**

YOLO COUNTY OFFICE OF EDUCATION

OCTOBER 26, 2021



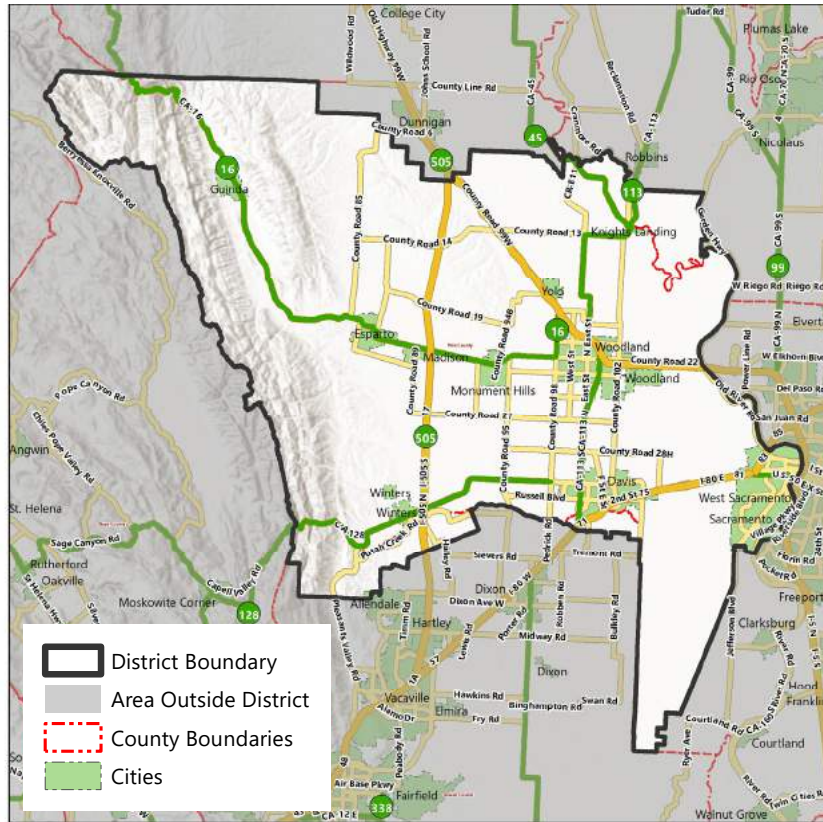
► DISTRICT DEMOGRAPHICS
2020 CENSUS DATA



- Validated redistricting data was released by the California Department of Finance on September 20.
- This data showed substantial changes in the area served by Yolo County Office of Education from 2010 to 2020, including overall population growth of 15,909 (8%)

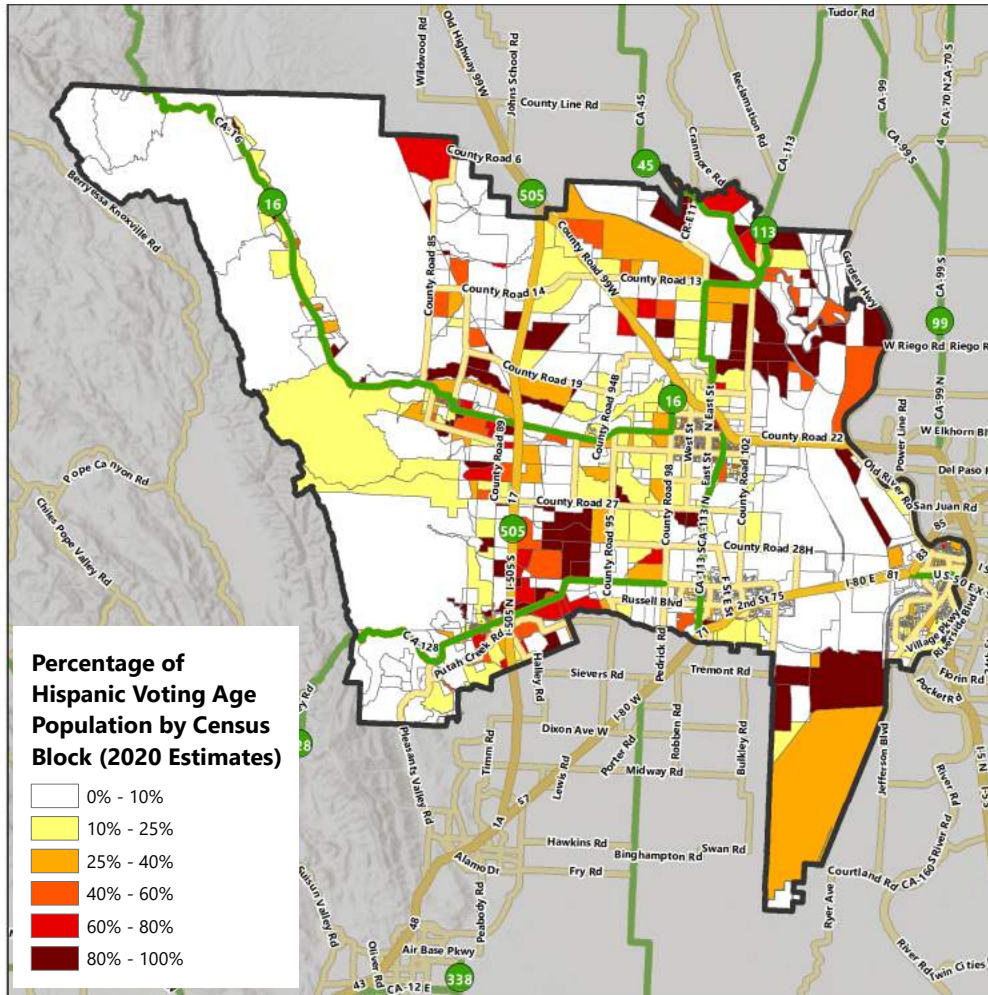
Population (Within District)	Total Population			
	2010 Census	2020 Census	Total Change	Percent Change
Trustee Area 1	39,275	44,997	5,722	14.6%
Trustee Area 2	41,426	44,854	3,428	8.3%
Trustee Area 3	38,758	43,262	4,504	11.6%
Trustee Area 4	40,518	41,685	1,167	2.9%
Trustee Area 5	39,477	40,565	1,088	2.8%
Total Population	199,454	215,363	15,909	8.0%

► DISTRICT DEMOGRAPHICS 2020 CENSUS DATA



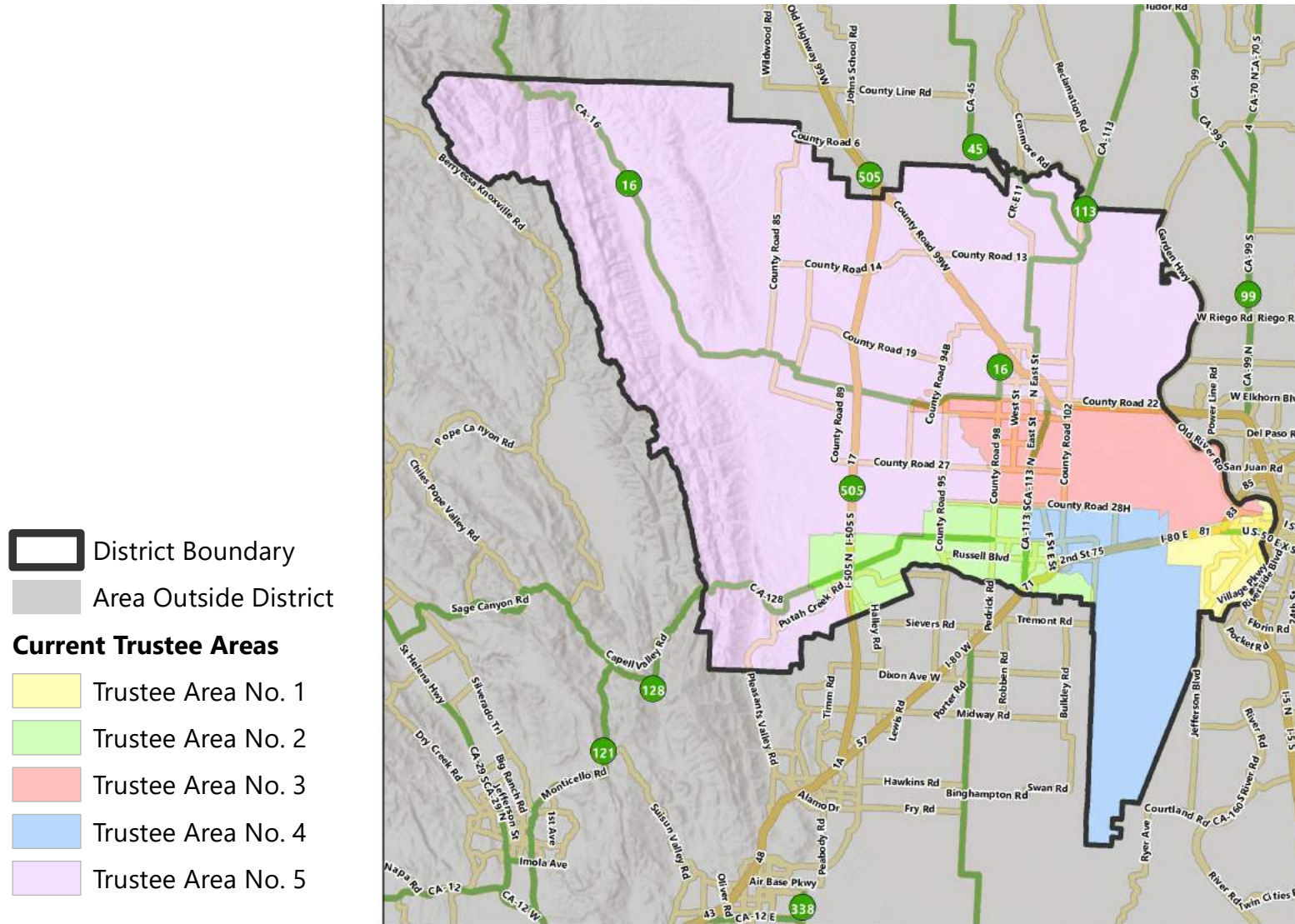
Population	Total Population		Age 18 and over	
	Total	%	Total	%
Hispanic/Latino	70,912	32.9%	50,726	29.7%
White	93,711	43.5%	79,788	46.8%
Black / African American	5,712	2.7%	4,575	2.7%
American Indian /Alaska Native	956	0.4%	786	0.5%
Asian	29,827	13.8%	24,950	14.6%
Native Hawaiian /Pacific Islander	1,077	0.5%	902	0.5%
Other	1,288	0.6%	983	0.6%
Two or More Races	11,880	5.5%	7,943	4.7%
Total	215,363	100%	170,653	100%

► DISTRICT DEMOGRAPHICS
HISPANIC CITIZEN VOTING AGE POPULATION ESTIMATES



Population	2015-2019 CVAP	
	Total	%
Hispanic/Latino	35,053	24.1%
White	81,651	56.2%
Black / African American	4,393	3.0%
American Indian / Alaska Native	542	0.4%
Asian	18,222	12.6%
Native Hawaiian/ Pacific Islander	510	0.4%
Two or More Races	4,815	3.3%
Total	145,186	100%

▶ CURRENT TRUSTEE AREAS



► CURRENT TRUSTEE AREAS

Census 2020 Total Population:	215,363	Ideal Trustee Area Size:	43,073	Total Variance:	10.3%
----------------------------------	---------	-----------------------------	--------	-----------------	-------

TRUSTEE AREA	Trustee Area 1		Trustee Area 2		Trustee Area 3		Trustee Area 4		Trustee Area 5	
TP* vs. CVAP**	TP	CVAP	TP	CVAP	TP	CVAP	TP	CVAP	TP	CVAP
Population	44,997	28,359	44,854	34,508	43,262	26,608	41,685	29,007	40,565	26,704
Population Variance	4.5%	N/A	4.1%	N/A	0.4%	N/A	-3.2%	N/A	-5.8%	N/A
Hispanic/Latino	29.5%	19.8%	23.9%	20.4%	42.8%	32.2%	16.8%	11.5%	52.7%	39.3%
White	41.8%	55.5%	49.9%	56.0%	41.0%	55.4%	50.2%	63.1%	34.2%	50.7%
Black/African American	5.0%	6.0%	2.4%	2.1%	1.8%	2.8%	2.2%	2.6%	1.7%	1.7%
American Indian/Alaska Native	0.6%	0.4%	0.4%	0.1%	0.5%	0.5%	0.2%	0.4%	0.6%	0.4%
Asian	14.3%	11.7%	16.9%	17.5%	8.7%	6.5%	22.9%	18.9%	6.2%	6.2%
Native Hawaiian/Other Pacific Islander	1.0%	1.0%	0.5%	0.1%	0.6%	0.2%	0.2%	0.3%	0.3%	0.1%
Other	0.7%	N/A	0.6%	N/A	0.6%	N/A	0.7%	N/A	0.4%	N/A
Two or More Races	7.2%	5.5%	5.5%	3.7%	4.1%	2.4%	6.8%	3.2%	3.8%	1.5%

*Total Population; Source: Redistricting Database for California, Published by Statewide Database on September 20, 2021

**Citizen Voting Age Population (CVAP); Source: American Community Survey, 2015-2019 Data

▶ CONSIDERATIONS IN VOTING AREAS



Each area shall contain nearly equal number of inhabitants



Follow man-made and natural geographic features, as much as possible



Drawn to comply with the Federal Voting Rights Act



Respect incumbency, if possible



Compact and contiguous, as much as possible



Other local considerations



Respect communities of interest, as much as possible



QUESTIONS

3. ADJOURNMENT
