

RESOLUTION NO. 21-22/28

**RESOLUTION OF THE YOLO COUNTY COMMITTEE
ON SCHOOL DISTRICT ORGANIZATION
APPROVING ADJUSTED TRUSTEE AREA BOUNDARIES FOR THE
YOLO COUNTY BOARD OF EDUCATION**

WHEREAS, pursuant to Education Code section 1000, the Yolo County Board of Education (“BOE”) uses a by-trustee area election process to elect its governing board members; and

WHEREAS, Education Code section 1002(b) requires County Committees on School District Organization (“County Committee”) to approve adjusted trustee area boundaries for the County Board of Education following each decennial federal census using population figures validated by the Population Research Unit of the Department of Finance; and

WHEREAS, the adjustments shall ensure that the population of each trustee area is proportional pursuant to Education Code section 1002(a); and

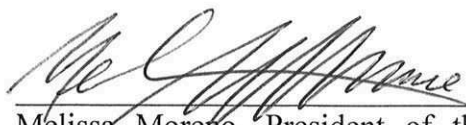
WHEREAS, the County Committee has reviewed several adjusted trustee area boundary plans and now wishes to take action to approve a final adjusted map plan pursuant to Education Code section 1002(b); and

WHEREAS, the County Committee and its consultants have thoroughly reviewed Plan 1A and has insured that it meets the population criteria set forth in Education Code section 1002(a).

NOW THEREFORE, be it resolved by the Yolo County Committee on School District Organization as follows:

1. That the above recitals are true and correct.
2. That the County Committee hereby approves Plan 1A.
3. That the Chief Executive Officer of the County Committee and/or his designee take all actions necessary to implement the adjusted trustee area boundaries prior to the next regularly scheduled Yolo County Office of Education Governing Board Member election.

ADOPTED, SIGNED AND APPROVED this 25th day of February, 2022.



Melissa Moreno, President of the Yolo County
Committee on School District Organization

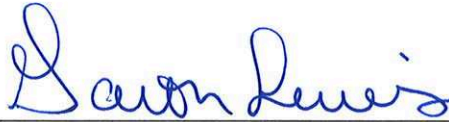
I, Garth Lewis, Clerk of the Yolo County Committee on School District Organization, do hereby certify that the foregoing Resolution was adopted by the County Committee at a meeting of said Committee held on the 25th day of February, 2022, and that it was so adopted by the following vote:

AYES: Esquivel, Moreno, Souza Cole, Yip, Zendejas

NOES: None

ABSTAIN: None

ABSENT: None



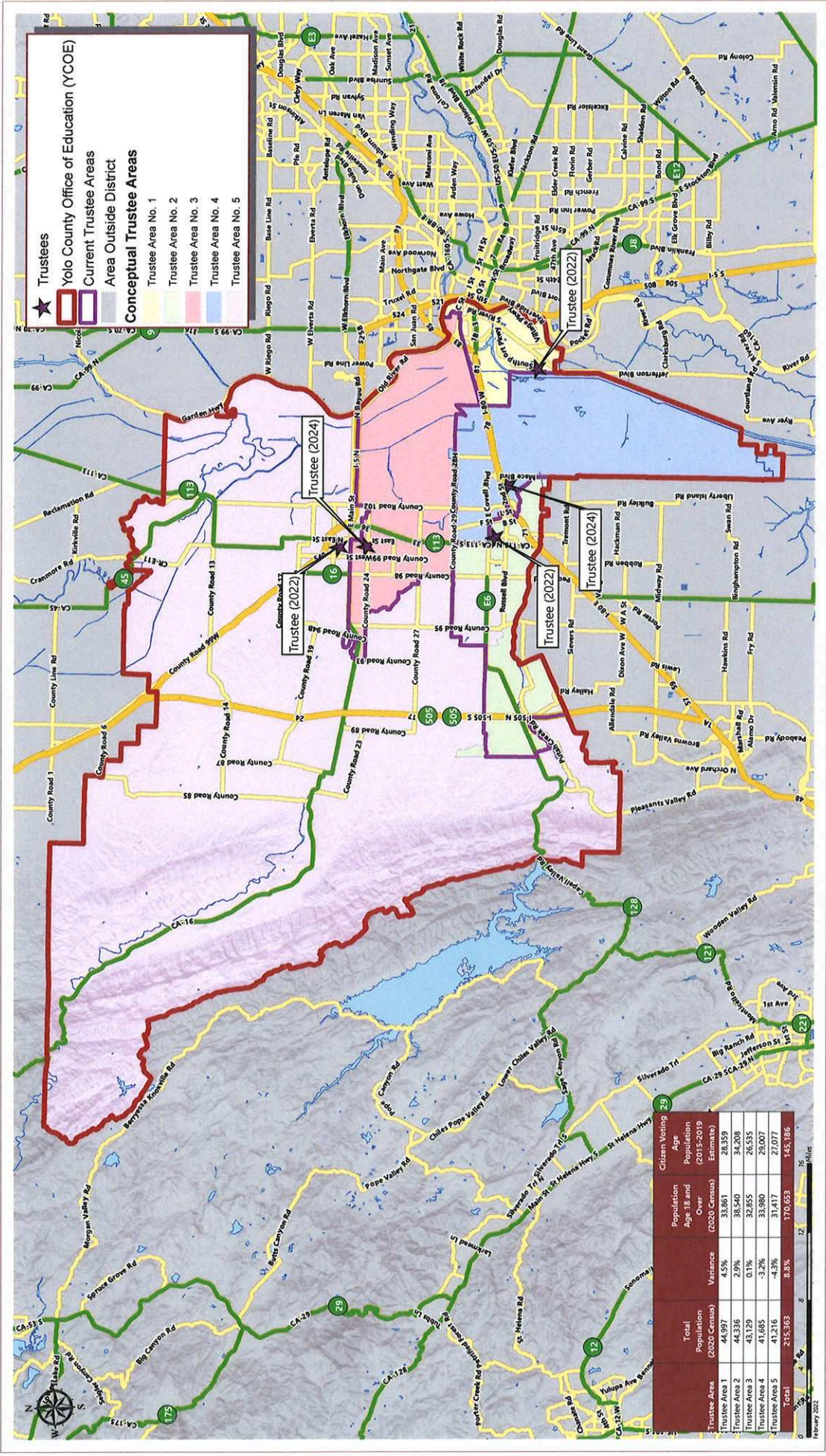
Garth Lewis, Clerk of the Yolo County Committee
on School District Organization

EXHIBIT "A"

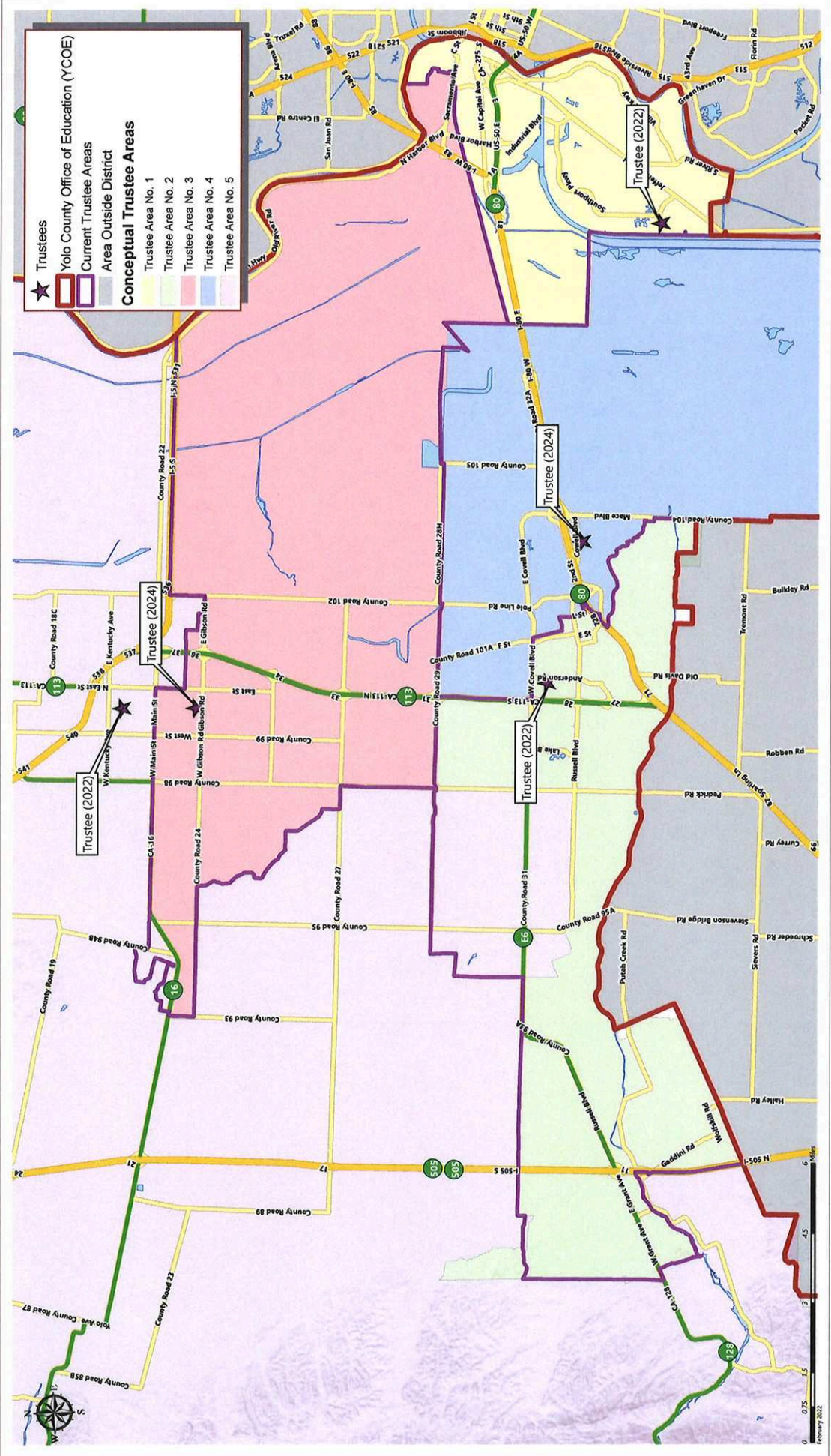
REVISED TRUSTEE AREA PLAN ADJUSTED POST-2020 CENSUS

YOLO COUNTY OFFICE OF EDUCATION

CONCEPTUAL TRUSTEE AREAS - SCENARIO 1A



COOPERATIVE STRATEGIES
ANALYSIS • PLANNING • SUPPORT



CONCEPTUAL TRUSTEE AREAS - SCENARIO 1A

Total Population:	215,363	Ideal Population:	43,073	Variance:	8.8%
--------------------------	----------------	--------------------------	---------------	------------------	-------------

Total Population (2020 Census)					
	Trustee Area 1	Trustee Area 2	Trustee Area 3	Trustee Area 4	Trustee Area 5
Population	44,997	44,336	43,129	41,685	41,216
Population Variance	1,924	1,263	56	-1,388	-1,857
	4.5%	2.9%	0.1%	-3.2%	-4.3%
Hispanic/Latino	29.5%	24.0%	42.9%	16.8%	52.1%
White	41.8%	49.6%	40.9%	50.2%	34.9%
Black/ African American	5.0%	2.4%	1.8%	2.2%	1.7%
American Indian/ Alaska Native	0.6%	0.4%	0.5%	0.2%	0.6%
Asian	14.3%	17.0%	8.7%	22.9%	6.2%
Native Hawaiian/ Other Pacific Islander	1.0%	0.5%	0.6%	0.2%	0.3%
Other	0.7%	0.6%	0.6%	0.7%	0.4%
Two or More Races	7.2%	5.6%	4.1%	6.8%	3.8%

Population 18 and Over (2020 Census)					
	Trustee Area 1	Trustee Area 2	Trustee Area 3	Trustee Area 4	Trustee Area 5
Population	33,861	38,540	32,855	33,980	31,417
Hispanic/Latino	26.7%	22.0%	38.9%	15.5%	48.2%
White	45.5%	51.1%	45.0%	51.9%	39.0%
Black/ African American	5.2%	2.4%	1.9%	2.1%	1.8%
American Indian/ Alaska Native	0.6%	0.4%	0.5%	0.1%	0.6%
Asian	14.4%	18.0%	8.9%	24.2%	6.4%
Native Hawaiian/ Other Pacific Islander	1.1%	0.5%	0.6%	0.2%	0.3%
Other	0.6%	0.6%	0.6%	0.7%	0.4%
Two or More Races	5.9%	4.9%	3.6%	5.3%	3.4%

Citizens by Voting Age Population Estimate (2015-2019)					
	Trustee Area 1	Trustee Area 2	Trustee Area 3	Trustee Area 4	Trustee Area 5
Population	28,359	34,208	26,535	29,007	27,077
Hispanic/Latino	19.8%	20.5%	32.2%	11.5%	38.8%
White	55.5%	55.8%	55.4%	63.1%	51.2%
Black/ African American	6.0%	2.1%	2.8%	2.6%	1.7%
American Indian/ Alaska Native	0.4%	0.1%	0.5%	0.4%	0.4%
Asian	11.7%	17.5%	6.5%	18.9%	6.2%
Native Hawaiian/ Other Pacific Islander	1.0%	0.1%	0.2%	0.3%	0.1%
Other	N/A	N/A	N/A	N/A	N/A
Two or More Races	5.5%	3.8%	2.4%	3.2%	1.5%