



▶ **TRUSTEE AREA  
SCENARIOS**

YOLO COUNTY OFFICE OF EDUCATION

**FEBRUARY 25, 2022**



**COOPERATIVE  
STRATEGIES**  
ASSESS • PLAN • FUND • BUILD

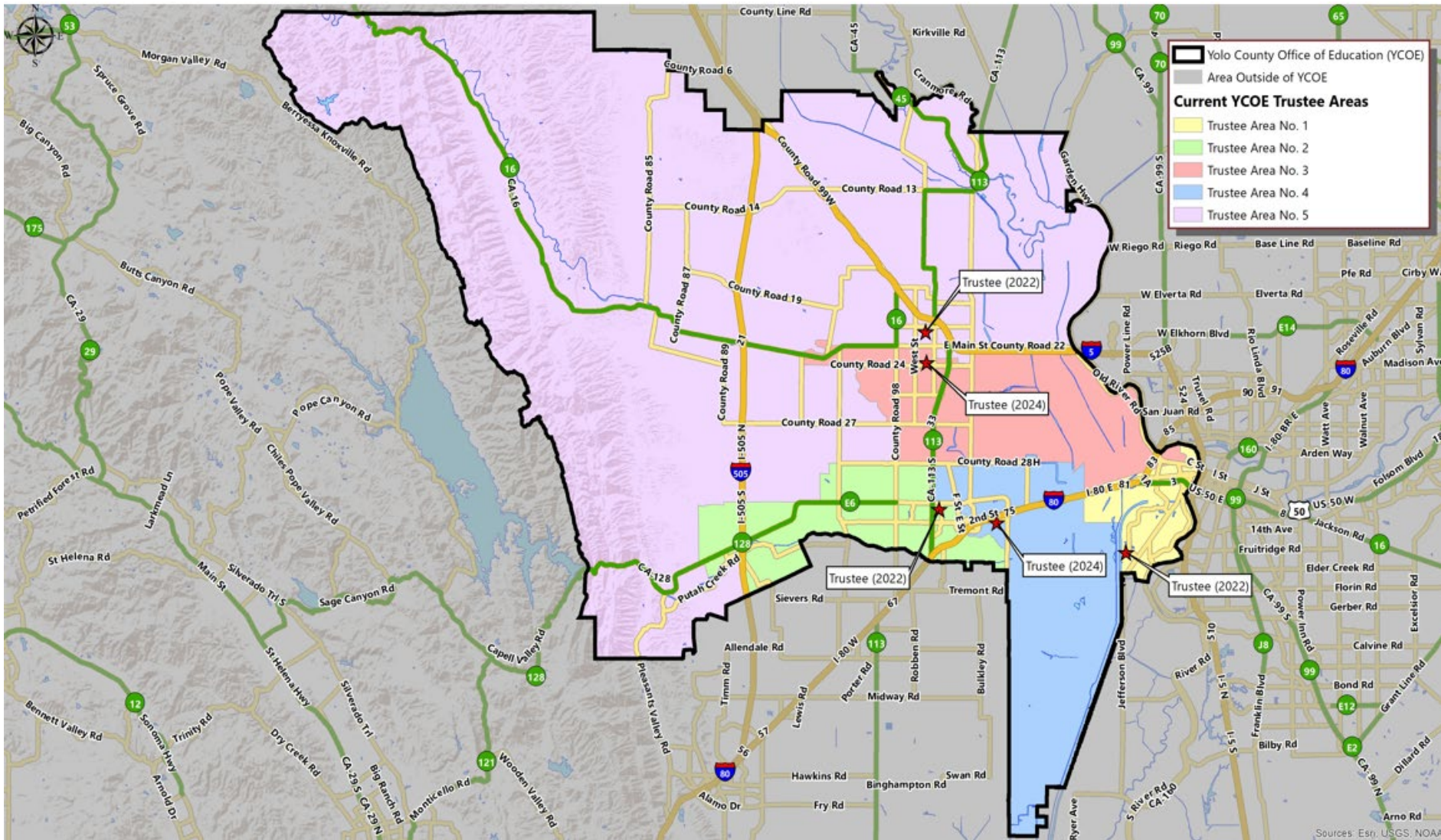
▶ DISTRICT DEMOGRAPHICS  
**2020 CENSUS DATA**

- Validated redistricting data was released by the California Department of Finance on September 20.
- This data showed substantial changes in the area served by Yolo County Office of Education from 2010 to 2020, including overall population growth of 15,909 (8%)

Population (Within District)	Total Population			
	2010 Census	2020 Census	Total Change	Percent Change
Trustee Area 1	39,275	44,997	5,722	14.6%
Trustee Area 2	41,426	44,854	3,428	8.3%
Trustee Area 3	38,758	43,262	4,504	11.6%
Trustee Area 4	40,518	41,685	1,167	2.9%
Trustee Area 5	39,477	40,565	1,088	2.8%
<b>Total Population</b>	<b>199,454</b>	<b>215,363</b>	<b>15,909</b>	<b>8.0%</b>



# ▶ CURRENT TRUSTEE AREAS



## ► CURRENT TRUSTEE AREAS

Census 2020 Total Population:	215,363	Ideal Trustee Area Size:	43,073	Total Variance:	10.3%
----------------------------------	---------	-----------------------------	--------	-----------------	-------

TRUSTEE AREA	Trustee Area 1		Trustee Area 2		Trustee Area 3		Trustee Area 4		Trustee Area 5	
	TP*	CVAP**	TP	CVAP	TP	CVAP	TP	CVAP	TP	CVAP
Population	44,997	28,359	44,854	34,508	43,262	26,608	41,685	29,007	40,565	26,704
Population Variance	4.5%	N/A	4.1%	N/A	0.4%	N/A	-3.2%	N/A	-5.8%	N/A
Hispanic/Latino	29.5%	19.8%	23.9%	20.4%	42.8%	32.2%	16.8%	11.5%	52.7%	39.3%
White	41.8%	55.5%	49.9%	56.0%	41.0%	55.4%	50.2%	63.1%	34.2%	50.7%
Black/African American	5.0%	6.0%	2.4%	2.1%	1.8%	2.8%	2.2%	2.6%	1.7%	1.7%
American Indian/Alaska Native	0.6%	0.4%	0.4%	0.1%	0.5%	0.5%	0.2%	0.4%	0.6%	0.4%
Asian	14.3%	11.7%	16.9%	17.5%	8.7%	6.5%	22.9%	18.9%	6.2%	6.2%
Native Hawaiian/Other Pacific Islander	1.0%	1.0%	0.5%	0.1%	0.6%	0.2%	0.2%	0.3%	0.3%	0.1%
Other	0.7%	N/A	0.6%	N/A	0.6%	N/A	0.7%	N/A	0.4%	N/A
Two or More Races	7.2%	5.5%	5.5%	3.7%	4.1%	2.4%	6.8%	3.2%	3.8%	1.5%

\*Total Population; Source: Redistricting Database for California, Published by Statewide Database on September 20, 2021

\*\*Citizen Voting Age Population (CVAP); Source: American Community Survey, 2015-2019 Data

## ▶ CONSIDERATIONS IN TRUSTEE AREAS



Each area shall contain nearly equal number of inhabitants



Follow man-made and natural geographic features, as much as possible



Drawn to comply with the Federal Voting Rights Act



Respect incumbency, if possible



Compact and contiguous, as much as possible



Other local considerations



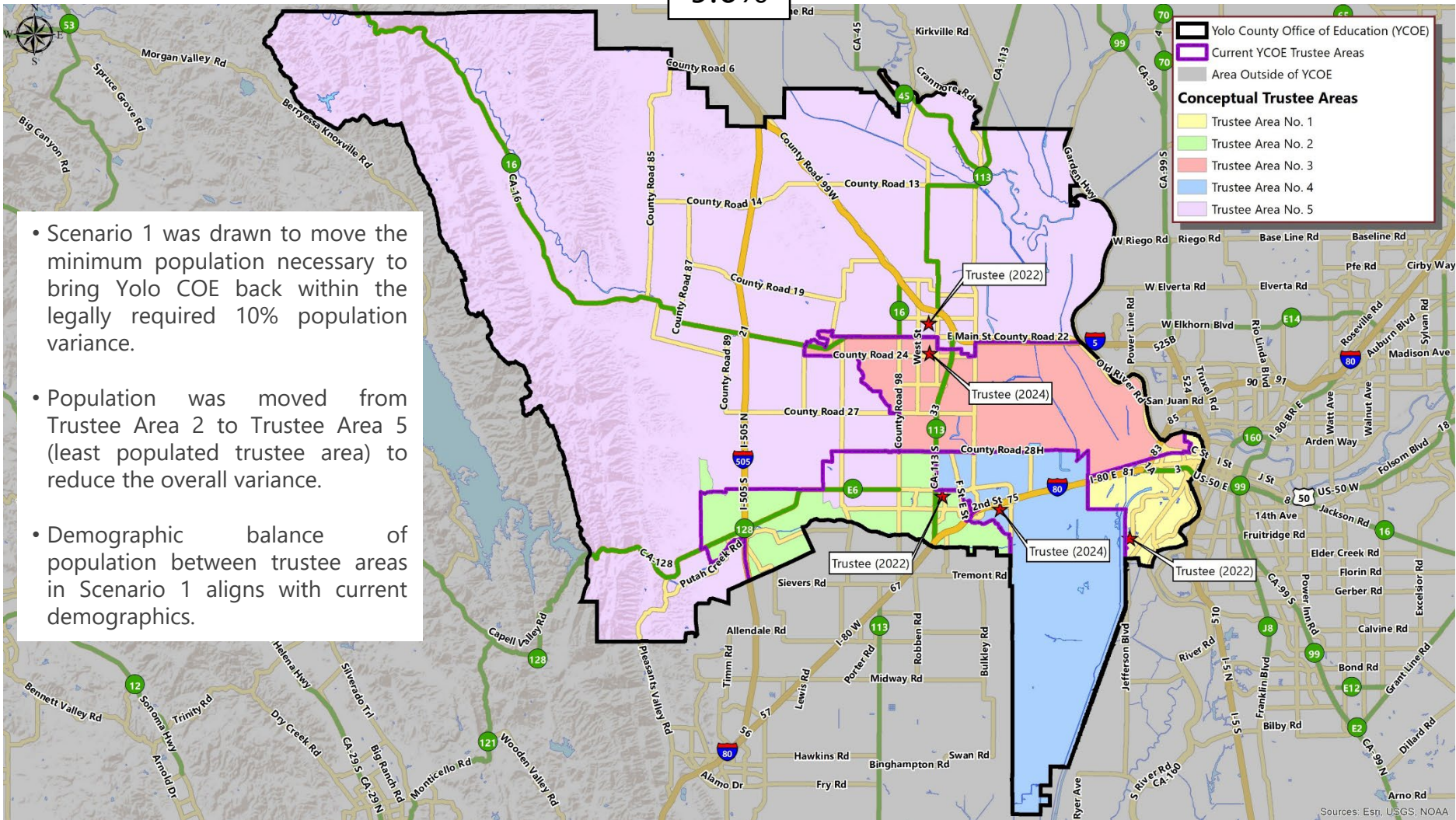
Respect communities of interest, as much as possible



# ▶ CONCEPTUAL TRUSTEE AREAS

## SCENARIO 1

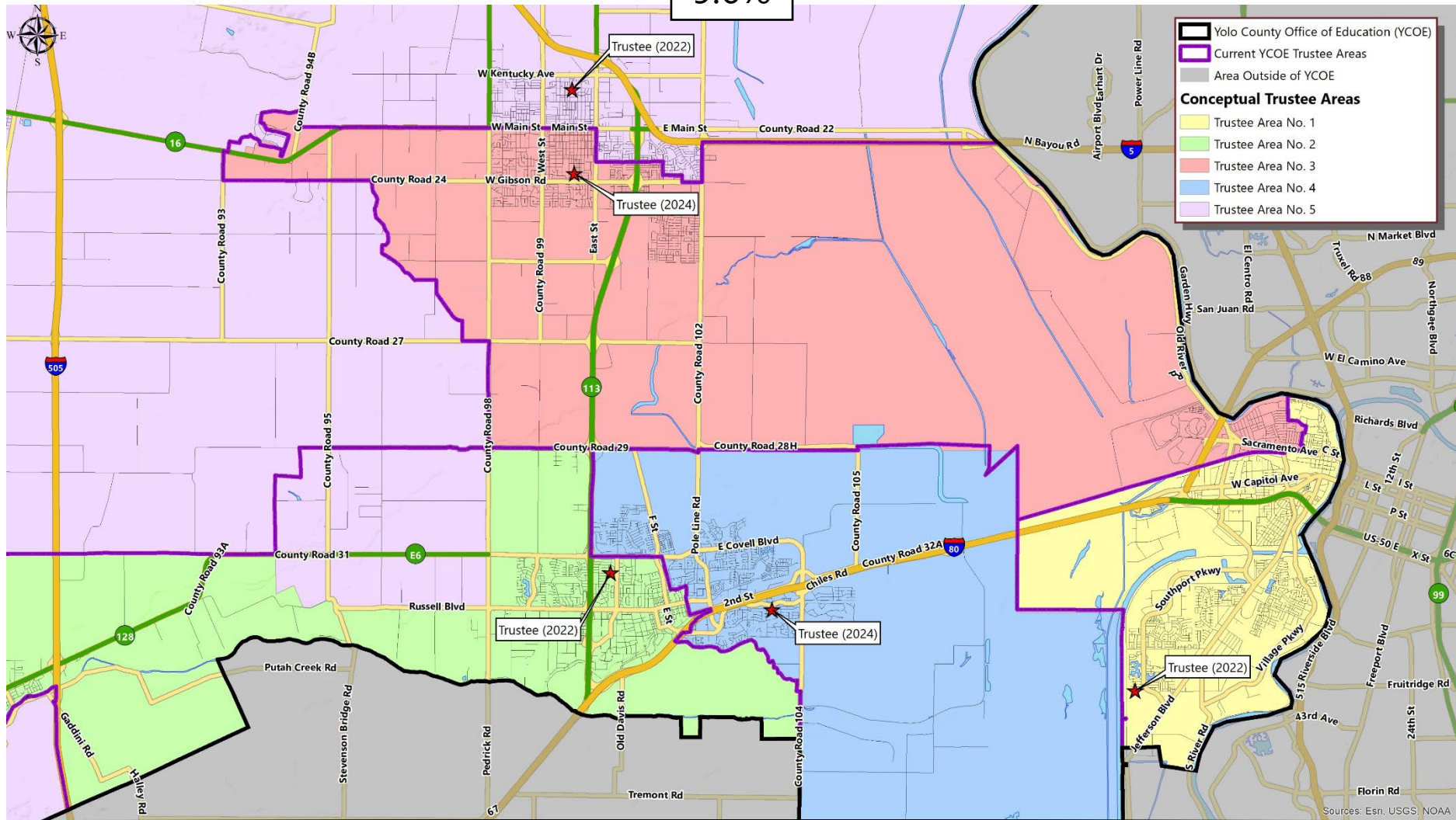
9.6%



- Scenario 1 was drawn to move the minimum population necessary to bring Yolo COE back within the legally required 10% population variance.
- Population was moved from Trustee Area 2 to Trustee Area 5 (least populated trustee area) to reduce the overall variance.
- Demographic balance of population between trustee areas in Scenario 1 aligns with current demographics.

# ▶ CONCEPTUAL TRUSTEE AREAS SCENARIO 1

9.6%





► DEMOGRAPHICS  
SCENARIO 1

Total Population:	215,363	Ideal Trustee Area Size:	43,073	Variance:	9.6%
-------------------	---------	--------------------------	--------	-----------	------

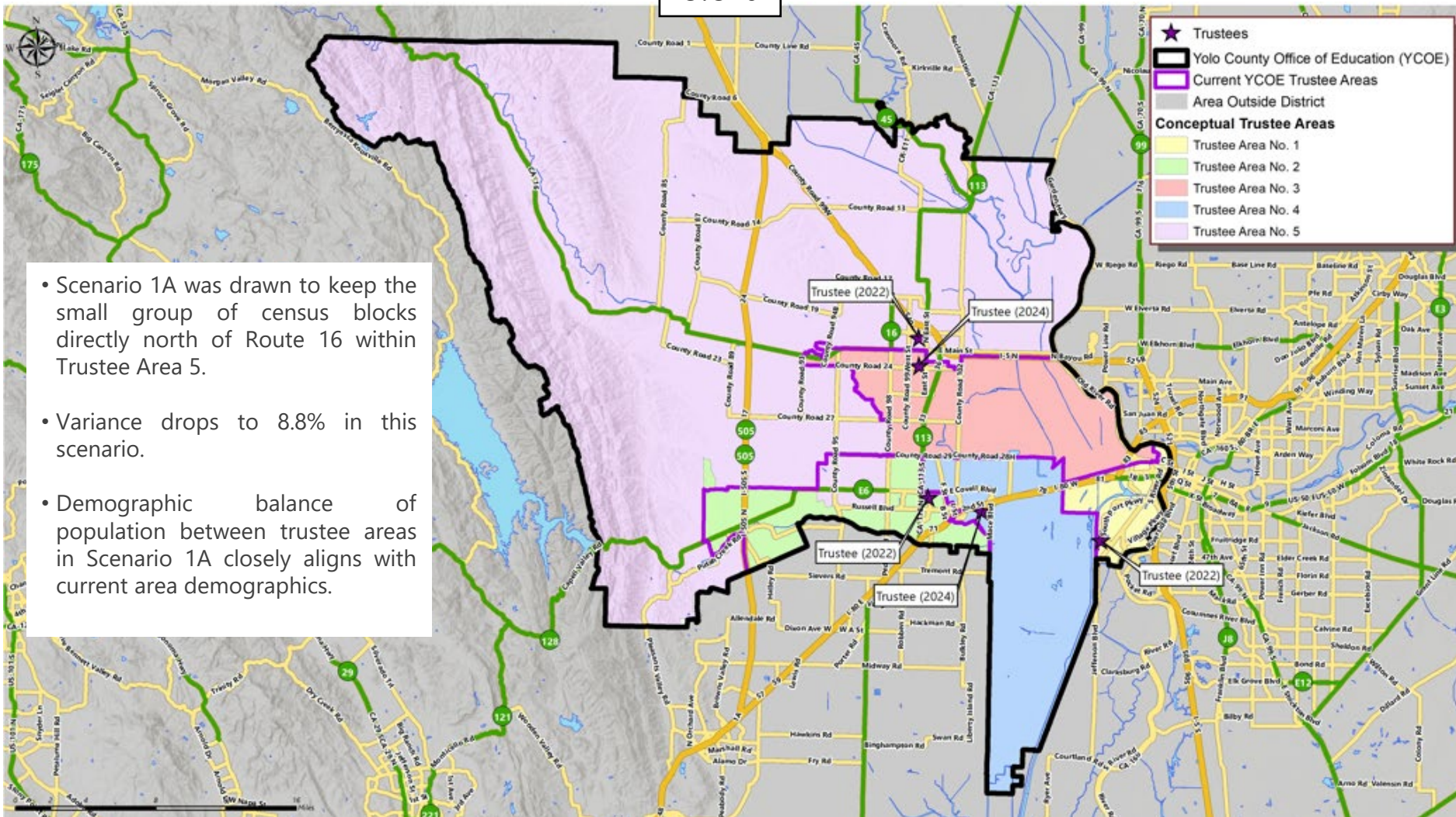
TRUSTEE AREA	Trustee Area 1		Trustee Area 2		Trustee Area 3		Trustee Area 4		Trustee Area 5	
TP* vs. CVAP**	TP	CVAP	TP	CVAP	TP	CVAP	TP	CVAP	TP	CVAP
Population	44,997	28,359	44,336	34,208	43,473	26,751	41,685	29,007	40,872	26,861
Population Variance	4.5%	N/A	2.9%	N/A	0.9%	N/A	-3.2%	N/A	-5.1%	N/A
Hispanic/Latino	29.5%	19.8%	24.0%	20.5%	42.7%	32.1%	16.8%	11.5%	52.4%	39.0%
White	41.8%	55.5%	49.6%	55.8%	41.1%	55.5%	50.2%	63.1%	34.6%	50.9%
Black/African American	5.0%	6.0%	2.4%	2.1%	1.8%	2.8%	2.2%	2.6%	1.7%	1.7%
American Indian/Alaska Native	0.6%	0.4%	0.4%	0.1%	0.5%	0.5%	0.2%	0.4%	0.6%	0.4%
Asian	14.3%	11.7%	17.0%	17.5%	8.7%	6.4%	22.9%	18.9%	6.2%	6.3%
Native Hawaiian/Other Pacific Islander	1.0%	1.0%	0.5%	0.1%	0.6%	0.2%	0.2%	0.3%	0.3%	0.1%
Other	0.7%	0.0%	0.6%	0.0%	0.6%	0.0%	0.7%	0.0%	0.4%	0.0%
Two or More Races	7.2%	5.5%	5.6%	3.8%	4.1%	2.4%	6.8%	3.2%	3.8%	1.5%



# ▶ CONCEPTUAL TRUSTEE AREAS

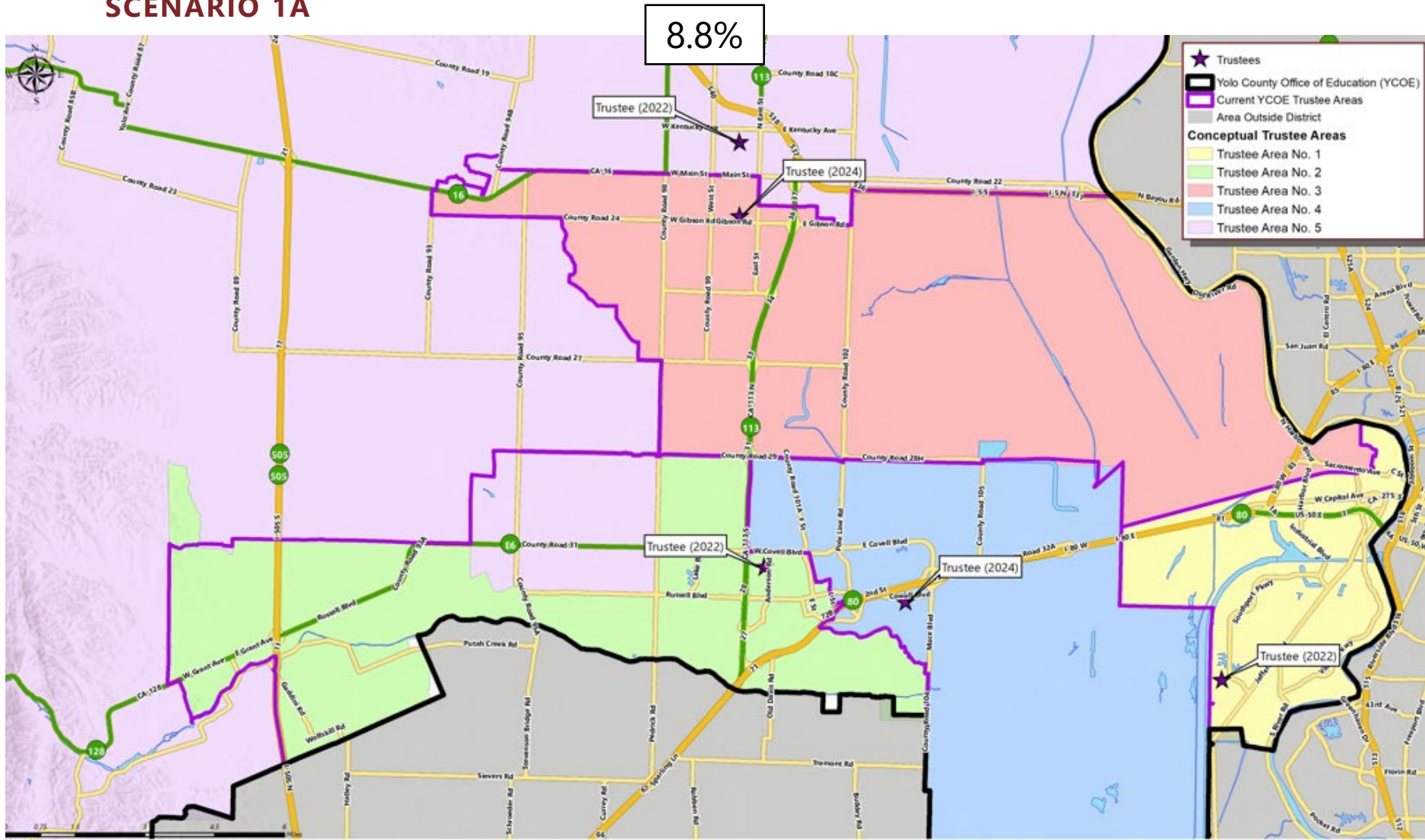
## SCENARIO 1A

8.8%



- Scenario 1A was drawn to keep the small group of census blocks directly north of Route 16 within Trustee Area 5.
- Variance drops to 8.8% in this scenario.
- Demographic balance of population between trustee areas in Scenario 1A closely aligns with current area demographics.

# ▶ CONCEPTUAL TRUSTEE AREAS SCENARIO 1A





► **DEMOGRAPHICS**  
**SCENARIO 1A**

<b>Total Population:</b>	<b>215,363</b>	<b>Ideal Trustee Area Size:</b>	<b>43,073</b>	<b>Variance:</b>	<b>8.8%</b>
--------------------------	----------------	---------------------------------	---------------	------------------	-------------

<b>TRUSTEE AREA</b>	<b>Trustee Area 1</b>		<b>Trustee Area 2</b>		<b>Trustee Area 3</b>		<b>Trustee Area 4</b>		<b>Trustee Area 5</b>	
<b>TP* vs. CVAP**</b>	<b>TP</b>	<b>CVAP</b>	<b>TP</b>	<b>CVAP</b>	<b>TP</b>	<b>CVAP</b>	<b>TP</b>	<b>CVAP</b>	<b>TP</b>	<b>CVAP</b>
Population	44,997	<b>28,359</b>	44,336	<b>34,208</b>	43,129	<b>26,535</b>	41,685	<b>29,007</b>	41,216	<b>27,077</b>
Population Variance	4.5%	<b>N/A</b>	2.9%	<b>N/A</b>	0.1%	<b>N/A</b>	-3.2%	<b>N/A</b>	-4.3%	<b>N/A</b>
Hispanic/Latino	29.5%	<b>19.8%</b>	24.0%	<b>20.5%</b>	42.9%	<b>32.2%</b>	16.8%	<b>11.5%</b>	52.1%	<b>38.8%</b>
White	41.8%	<b>55.5%</b>	49.6%	<b>55.8%</b>	40.9%	<b>55.4%</b>	50.2%	<b>63.1%</b>	34.9%	<b>51.2%</b>
Black/African American	5.0%	<b>6.0%</b>	2.4%	<b>2.1%</b>	1.8%	<b>2.8%</b>	2.2%	<b>2.6%</b>	1.7%	<b>1.7%</b>
American Indian/Alaska Native	0.6%	<b>0.4%</b>	0.4%	<b>0.1%</b>	0.5%	<b>0.5%</b>	0.2%	<b>0.4%</b>	0.6%	<b>0.4%</b>
Asian	14.3%	<b>11.7%</b>	17.0%	<b>17.5%</b>	8.7%	<b>6.5%</b>	22.9%	<b>18.9%</b>	6.2%	<b>6.2%</b>
Native Hawaiian/Other Pacific Islander	1.0%	<b>1.0%</b>	0.5%	<b>0.1%</b>	0.6%	<b>0.2%</b>	0.2%	<b>0.3%</b>	0.3%	<b>0.1%</b>
Other	0.7%	<b>N/A</b>	0.6%	<b>N/A</b>	0.6%	<b>N/A</b>	0.7%	<b>N/A</b>	0.4%	<b>N/A</b>
Two or More Races	7.2%	<b>5.5%</b>	5.6%	<b>3.8%</b>	4.1%	<b>2.4%</b>	6.8%	<b>3.2%</b>	3.8%	<b>1.5%</b>

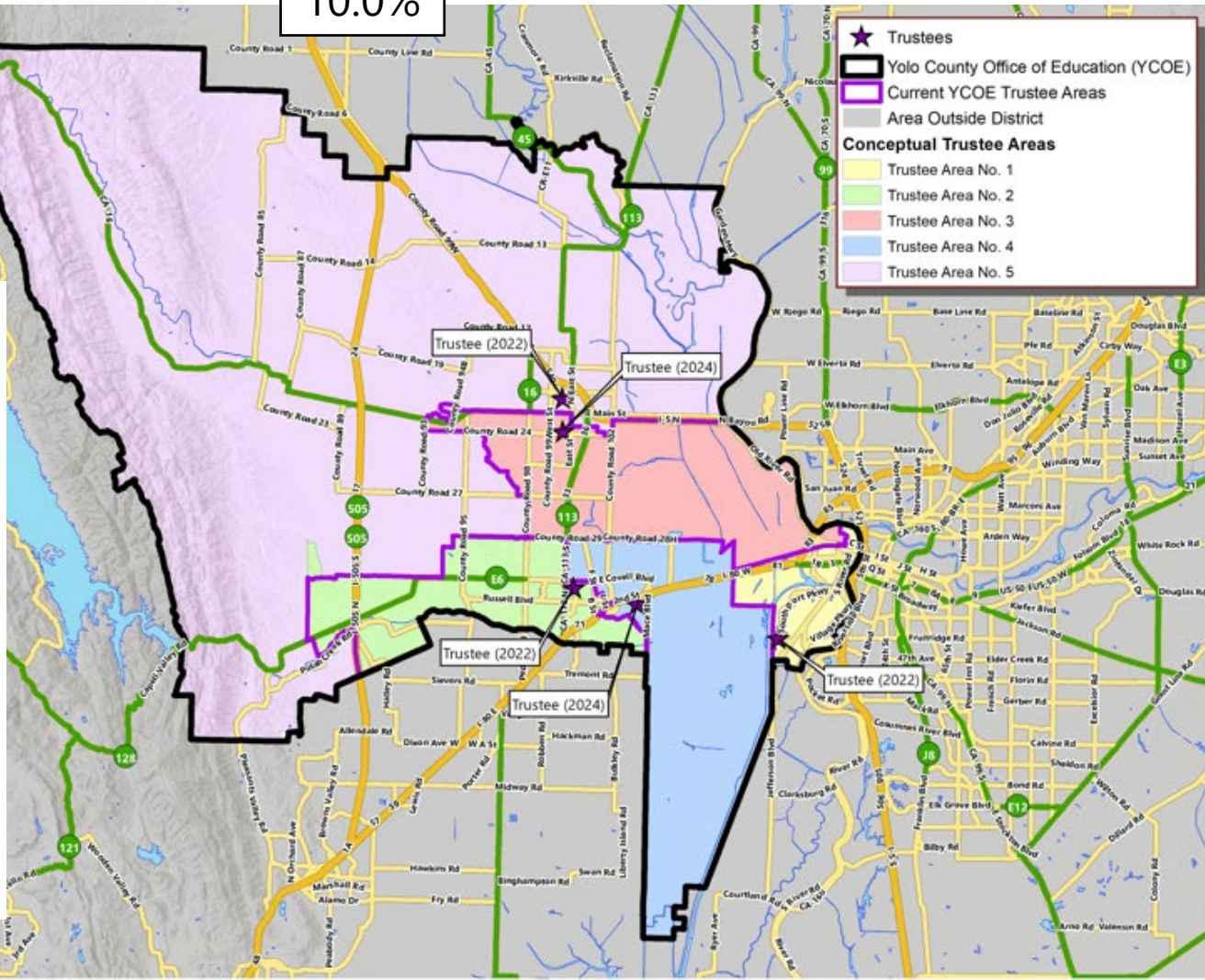


# ▶ CONCEPTUAL TRUSTEE AREAS

## SCENARIO 1B

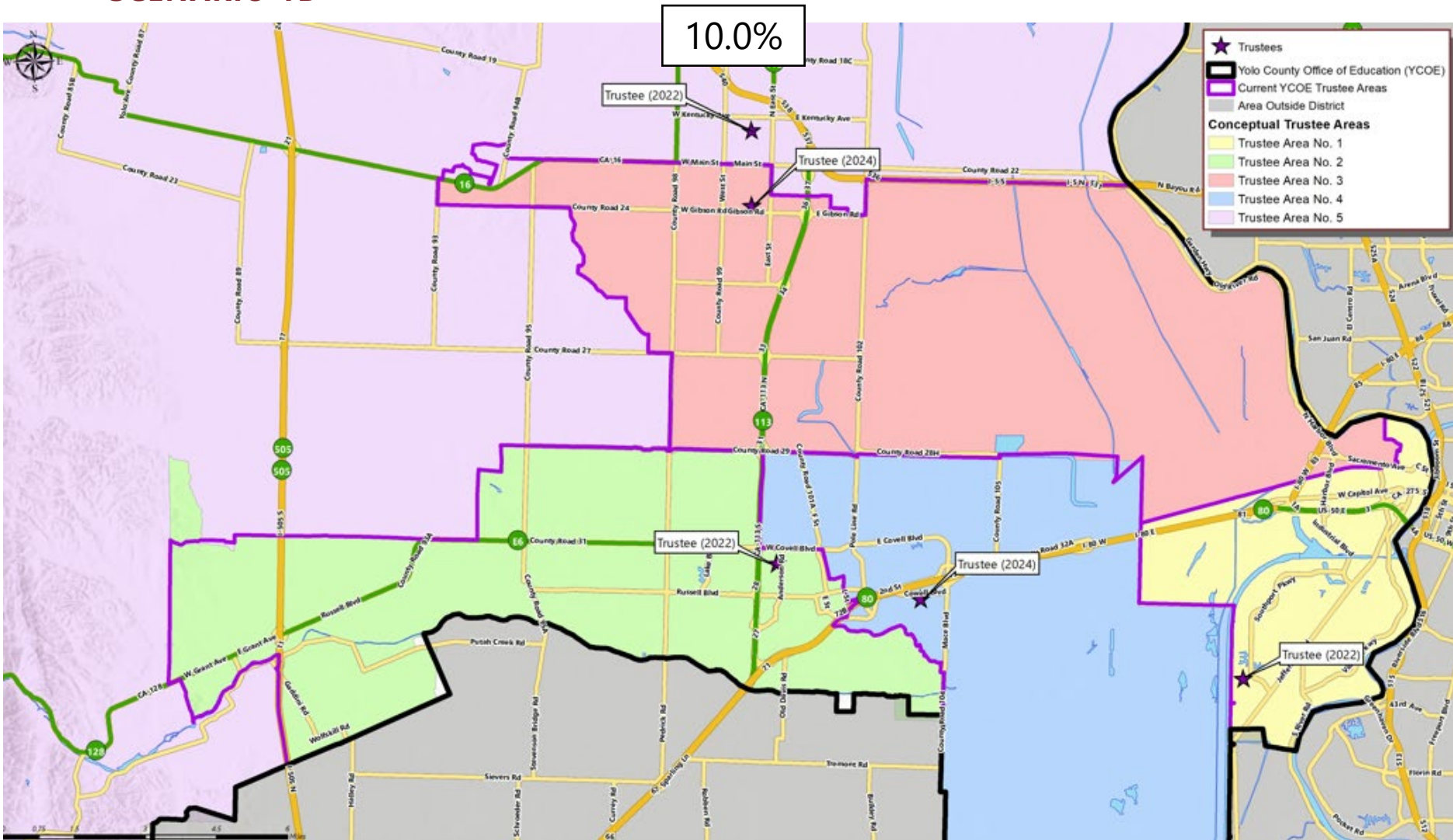
10.0%

- Scenario 1B was drawn to keep the small group of census blocks directly north of Route 16 within Trustee Area 5.
- Scenario 1B also retained a group of census blocks located north of E6, west of County Road 98, past County Road 95, within Trustee Area 2.
- Variance drop just below the 10% threshold.
- Demographic balance of population between trustee areas in Scenario 1B aligns with current demographics.



# ▶ CONCEPTUAL TRUSTEE AREAS

## SCENARIO 1B





► **DEMOGRAPHICS**  
**SCENARIO 1B**

<b>Total Population:</b>	<b>215,363</b>	<b>Ideal Trustee Area Size:</b>	<b>43,073</b>	<b>Variance:</b>	<b>10.0%</b>
--------------------------	----------------	---------------------------------	---------------	------------------	--------------

<b>TRUSTEE AREA</b>	<b>Trustee Area 1</b>		<b>Trustee Area 2</b>		<b>Trustee Area 3</b>		<b>Trustee Area 4</b>		<b>Trustee Area 5</b>	
<b>TP* vs. CVAP**</b>	<b>TP</b>	<b>CVAP</b>	<b>TP</b>	<b>CVAP</b>	<b>TP</b>	<b>CVAP</b>	<b>TP</b>	<b>CVAP</b>	<b>TP</b>	<b>CVAP</b>
Population	44,997	<b>28,359</b>	44,854	<b>34,508</b>	43,129	<b>26,535</b>	41,685	<b>29,007</b>	40,698	<b>26,777</b>
Population Variance	4.5%	<b>N/A</b>	4.1%	<b>N/A</b>	0.1%	<b>N/A</b>	-3.2%	<b>N/A</b>	-5.5%	<b>N/A</b>
Hispanic/Latino	29.5%	<b>19.8%</b>	23.9%	<b>20.4%</b>	42.9%	<b>32.2%</b>	16.8%	<b>11.5%</b>	52.6%	<b>39.2%</b>
White	41.8%	<b>55.5%</b>	49.9%	<b>56.0%</b>	40.9%	<b>55.4%</b>	50.2%	<b>63.1%</b>	34.3%	<b>50.8%</b>
Black/African American	5.0%	<b>6.0%</b>	2.4%	<b>2.1%</b>	1.8%	<b>2.8%</b>	2.2%	<b>2.6%</b>	1.7%	<b>1.7%</b>
American Indian/Alaska Native	0.6%	<b>0.4%</b>	0.4%	<b>0.1%</b>	0.5%	<b>0.5%</b>	0.2%	<b>0.4%</b>	0.6%	<b>0.4%</b>
Asian	14.3%	<b>11.7%</b>	16.9%	<b>17.5%</b>	8.7%	<b>6.5%</b>	22.9%	<b>18.9%</b>	6.2%	<b>6.2%</b>
Native Hawaiian/Other Pacific Islander	1.0%	<b>1.0%</b>	0.5%	<b>0.1%</b>	0.6%	<b>0.2%</b>	0.2%	<b>0.3%</b>	0.3%	<b>0.1%</b>
Other	0.7%	<b>N/A</b>	0.6%	<b>N/A</b>	0.6%	<b>N/A</b>	0.7%	<b>N/A</b>	0.4%	<b>N/A</b>
Two or More Races	7.2%	<b>5.5%</b>	5.5%	<b>3.7%</b>	4.1%	<b>2.4%</b>	6.8%	<b>3.2%</b>	3.8%	<b>1.5%</b>



▶ TRUSTEE AREA PROCESS

DATE	ACTIVITY
<del>October 26, 2021</del>	<del><b>Board Meeting: Presentation on Evaluation of Existing Voting Areas Receive Input on Potential Adjustments</b></del>
November	<del>Cooperative Strategies prepares potential maps of adjusted Voting Areas</del>
<b>November</b>	Draft Maps Posted to Yolo County Office of Education Website
<del>December 14, 2021</del>	<del><b>Board Meeting: Review Initial Scenarios and Provide Input</b></del>
<del>December - January</del>	<del>Cooperative Strategies revises scenarios based on Board and Public Input</del>
<del>January 11, 2022</del>	<del><b>Board Meeting: Review Maps and Conduct Public Hearing</b></del>
January	<del>Cooperative Strategies revises scenarios based on Board and Public Input</del>
<del>February 15, 2022</del>	<del><b>Board Meeting: Review Maps and Conduct Public Hearing</b></del>
<del>February 15-22</del>	<del>Cooperative Strategies revises scenarios based on Board and Public Input</del>
<b>February 25, 2022</b>	<b>Board Meeting: Review Maps and Conduct Public Hearing Board Selection of Map</b>
	Cooperative Strategies sends Final Trustee Areas Map to the County Registrars of Voters.



# QUESTIONS