



► **2020 CENSUS AND
REDISTRICTING**

YOLO COUNTY OFFICE OF EDUCATION

OCTOBER 26, 2021



▶ DISTRICT DEMOGRAPHICS
2020 CENSUS DATA

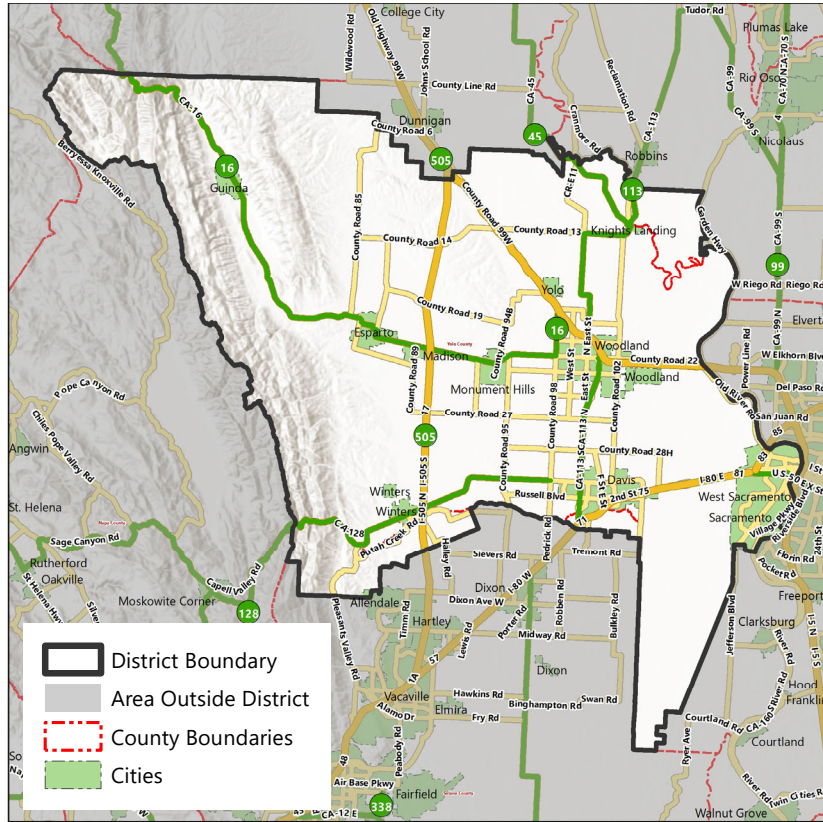


- Validated redistricting data was released by the California Department of Finance on September 20.
- This data showed substantial changes in the area served by Yolo County Office of Education from 2010 to 2020, including overall population growth of 15,909 (8%)

Population (Within District)	Total Population			
	2010 Census	2020 Census	Total Change	Percent Change
Trustee Area 1	39,275	44,997	5,722	14.6%
Trustee Area 2	41,426	44,854	3,428	8.3%
Trustee Area 3	38,758	43,262	4,504	11.6%
Trustee Area 4	40,518	41,685	1,167	2.9%
Trustee Area 5	39,477	40,565	1,088	2.8%
Total Population	199,454	215,363	15,909	8.0%

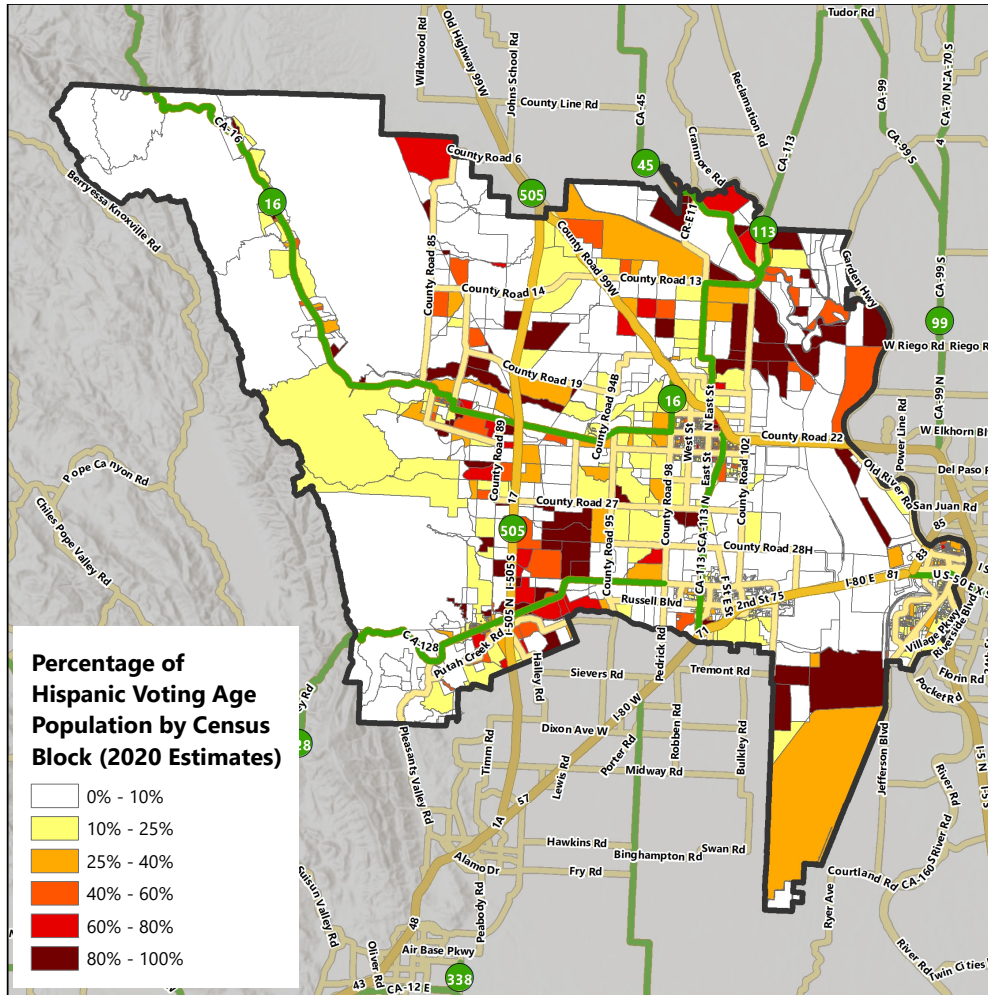
► DISTRICT DEMOGRAPHICS

2020 CENSUS DATA



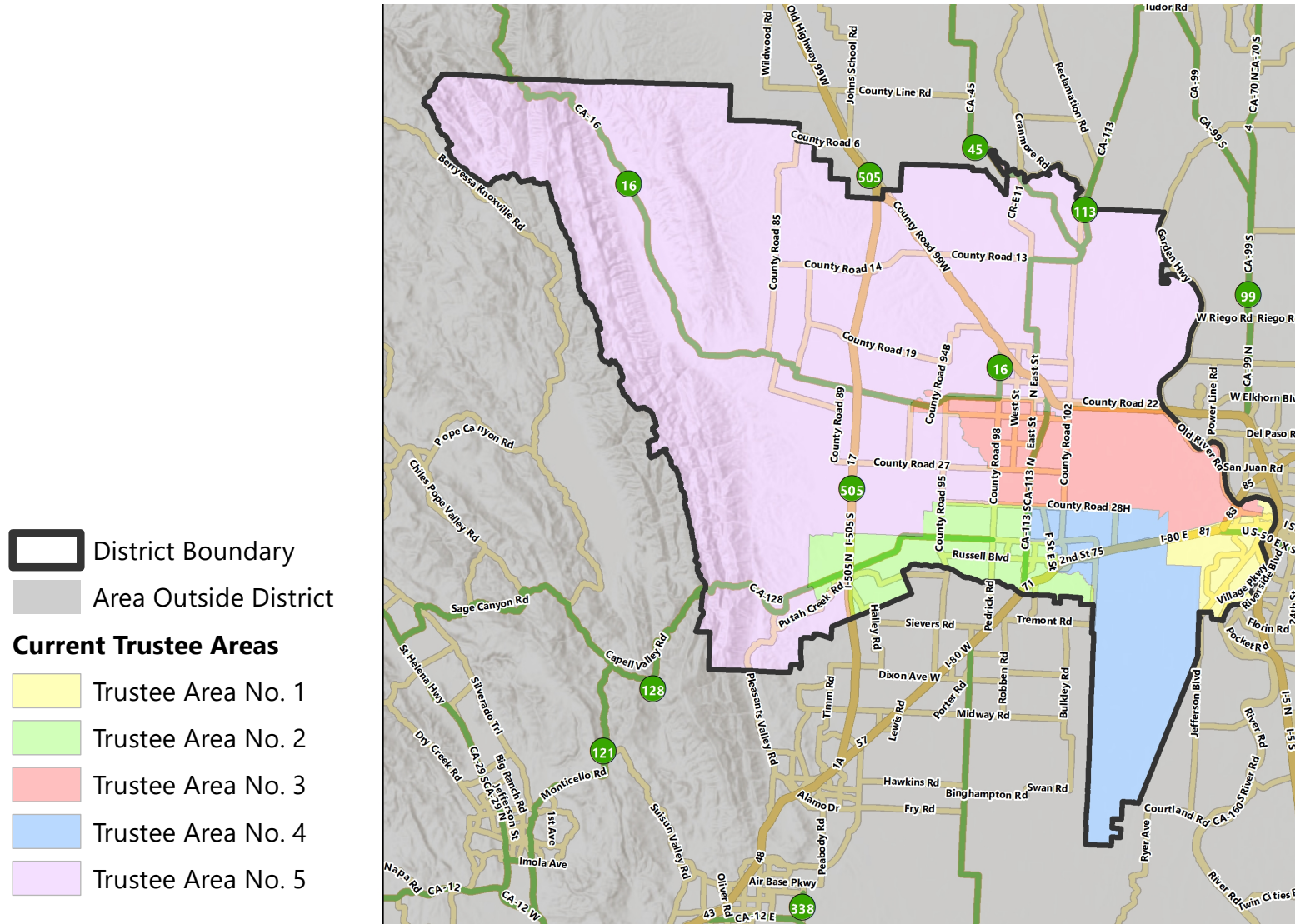
Population	Total Population		Age 18 and over	
	Total	%	Total	%
Hispanic/Latino	70,912	32.9%	50,726	29.7%
White	93,711	43.5%	79,788	46.8%
Black / African American	5,712	2.7%	4,575	2.7%
American Indian /Alaska Native	956	0.4%	786	0.5%
Asian	29,827	13.8%	24,950	14.6%
Native Hawaiian /Pacific Islander	1,077	0.5%	902	0.5%
Other	1,288	0.6%	983	0.6%
Two or More Races	11,880	5.5%	7,943	4.7%
Total	215,363	100%	170,653	100%

► DISTRICT DEMOGRAPHICS
HISPANIC CITIZEN VOTING AGE POPULATION ESTIMATES



Population	2015-2019 CVAP	
	Total	%
Hispanic/Latino	35,053	24.1%
White	81,651	56.2%
Black / African American	4,393	3.0%
American Indian / Alaska Native	542	0.4%
Asian	18,222	12.6%
Native Hawaiian/ Pacific Islander	510	0.4%
Two or More Races	4,815	3.3%
Total	145,186	100%

▶ CURRENT TRUSTEE AREAS



► CURRENT TRUSTEE AREAS

Census 2020 Total Population:	215,363	Ideal Trustee Area Size:	43,073	Total Variance:	10.3%
----------------------------------	---------	-----------------------------	--------	-----------------	-------

TRUSTEE AREA	Trustee Area 1		Trustee Area 2		Trustee Area 3		Trustee Area 4		Trustee Area 5	
TP* vs. CVAP**	TP	CVAP	TP	CVAP	TP	CVAP	TP	CVAP	TP	CVAP
Population	44,997	28,359	44,854	34,508	43,262	26,608	41,685	29,007	40,565	26,704
Population Variance	4.5%	N/A	4.1%	N/A	0.4%	N/A	-3.2%	N/A	-5.8%	N/A
Hispanic/Latino	29.5%	19.8%	23.9%	20.4%	42.8%	32.2%	16.8%	11.5%	52.7%	39.3%
White	41.8%	55.5%	49.9%	56.0%	41.0%	55.4%	50.2%	63.1%	34.2%	50.7%
Black/African American	5.0%	6.0%	2.4%	2.1%	1.8%	2.8%	2.2%	2.6%	1.7%	1.7%
American Indian/Alaska Native	0.6%	0.4%	0.4%	0.1%	0.5%	0.5%	0.2%	0.4%	0.6%	0.4%
Asian	14.3%	11.7%	16.9%	17.5%	8.7%	6.5%	22.9%	18.9%	6.2%	6.2%
Native Hawaiian/Other Pacific Islander	1.0%	1.0%	0.5%	0.1%	0.6%	0.2%	0.2%	0.3%	0.3%	0.1%
Other	0.7%	N/A	0.6%	N/A	0.6%	N/A	0.7%	N/A	0.4%	N/A
Two or More Races	7.2%	5.5%	5.5%	3.7%	4.1%	2.4%	6.8%	3.2%	3.8%	1.5%

*Total Population; Source: Redistricting Database for California, Published by Statewide Database on September 20, 2021

**Citizen Voting Age Population (CVAP); Source: American Community Survey, 2015-2019 Data

▶ CONSIDERATIONS IN VOTING AREAS



Each area shall contain nearly equal number of inhabitants



Follow man-made and natural geographic features, as much as possible



Drawn to comply with the Federal Voting Rights Act



Respect incumbency, if possible



Compact and contiguous, as much as possible



Other local considerations



Respect communities of interest, as much as possible

A row of yellow school buses is parked in a grassy field under a cloudy sky. A large, semi-transparent, stylized letter 'S' is overlaid on the image, with the word 'QUESTIONS' written in white capital letters across its center.

QUESTIONS