

Handout # 2 Item #
4-24-18 4.2
YCOE Mfg

YCOE Facilities
The Road Ahead

Facilities Master Plan

- Each Facility Binder Includes...
- Site Information/History
 - Demographics
 - 2011 Facility Condition Assessment
 - 2011 Facility Improvement Plan
 - Deferred maintenance plan and/or summary
 - Site plans/master plans

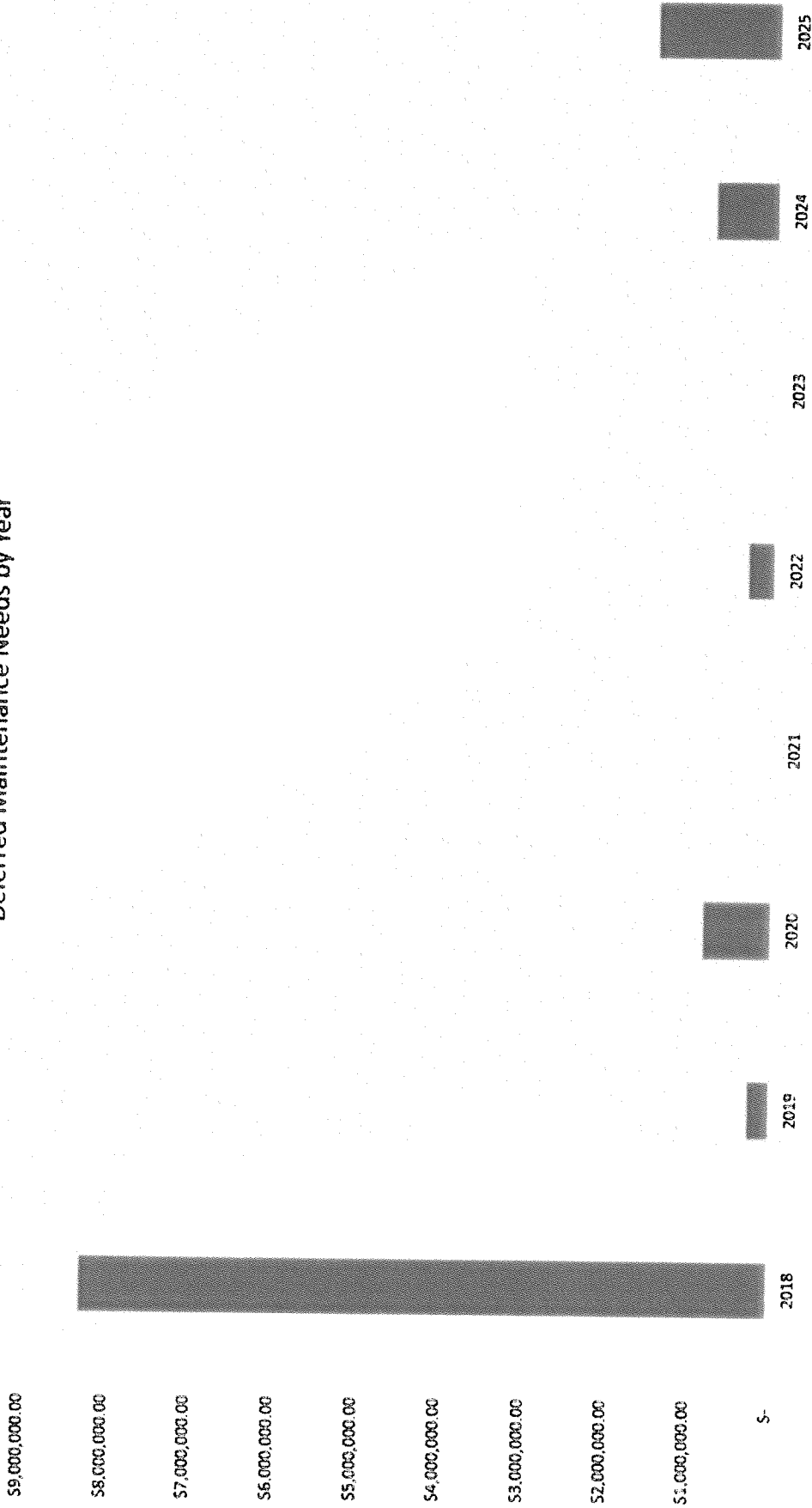
Facilities Master Plan

Each Facility Binder Includes...

- **Site information/History**
- **Demographics**
- **2017 Facility Condition Assessment**
- **Identified Site Facility Improvements (Not Deferred Maintenance)**
- **Deferred maintenance plan and/or summary**
- **Site plans/master plans**

Capital Forecast

Deferred Maintenance Needs by Year



Funding Deferred Maintenance

Deferred Maintenance

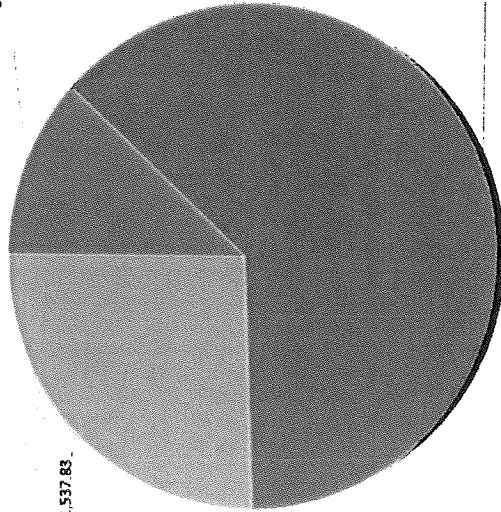
- Currently \$250,000 is allocated to deferred maintenance per fiscal year. We will never catch up to the roughly \$8,000,000 of backlogged work to maintain our owned infrastructure. It is a constant battle.
- This cannot fund the needs of our buildings, so it very strategically has to be used. Projects are prioritized based on multiple factors.
- This is the sad case for most public infrastructure.

Prioritization

Prioritization of needs

51,353,401.28

52,931,537.83



57,132,437.55

■ High ■ Medium ■ Low

High:

- Electrical Branch Wiring
- Electrical Service & Distribution
- Electrical Emergency Lighting
- Fire – Sprinklers & Standpipe
- HVAC – Heat Generating
- Fire – Alarm & Detection
- Roofing

Medium:

- Electrical Lighting
- Electrical Fiber & LAN Services
- Exterior Doors
- Exterior Walls Framing
- Exterior Windows
- HVAC - Controls &
- HVAC - Cooling Generating Systems
- HVAC – Distribution Systems
- HVAC – Energy Supply
- HVAC – Terminal Package Units
- Interior Doors
- Domestic Water Distribution
- Plumbing fixtures
- Rain Water Drainage
- Sanitary Waste

Low:

- Basement Construction
- Equip & Furnishings – Institutional Equipment
- Equip & Furnishings – Other
- Exterior Wall Finishes
- Interior Construction – Partitions & Stairs
- Interior Ceilings Finishes
- Interior Floor Finishes
- Interior Wall Finishes
- Foundations
- Site Infrastructure
- Interior Construction – Specialties

State of School Facilities in California

Passing and implementation of Prop 51

- Prop 51 passed in November 2016 authorizing \$9 billion worth of statewide school facilities bonds
- There are \$3.2 billion dollars worth of backlogged projects
- Approximately \$600 million of bonds are being sold in 17-18
- Only \$640 million of bonds are proposed to be sold in 18-19
- This is not adequate to fund the 3.2 billion (and growing) backlog.
 - Winters has an application for \$698,675 in the \$3.2 billion backlog

School facilities and student achievement

"The overall impact a school building has on students can be either positive or negative, depending upon the condition of the building. In cases where students attend school in substandard buildings they are definitely handicapped in their academic achievement. Correlation studies show a strong positive relationship between overall building conditions and student achievement. Researchers have repeatedly found a difference of between 5-17 percentile points difference between achievement of students in poor buildings and those students in standard buildings, when the socioeconomic status of students is controlled."

Educational facilities that support

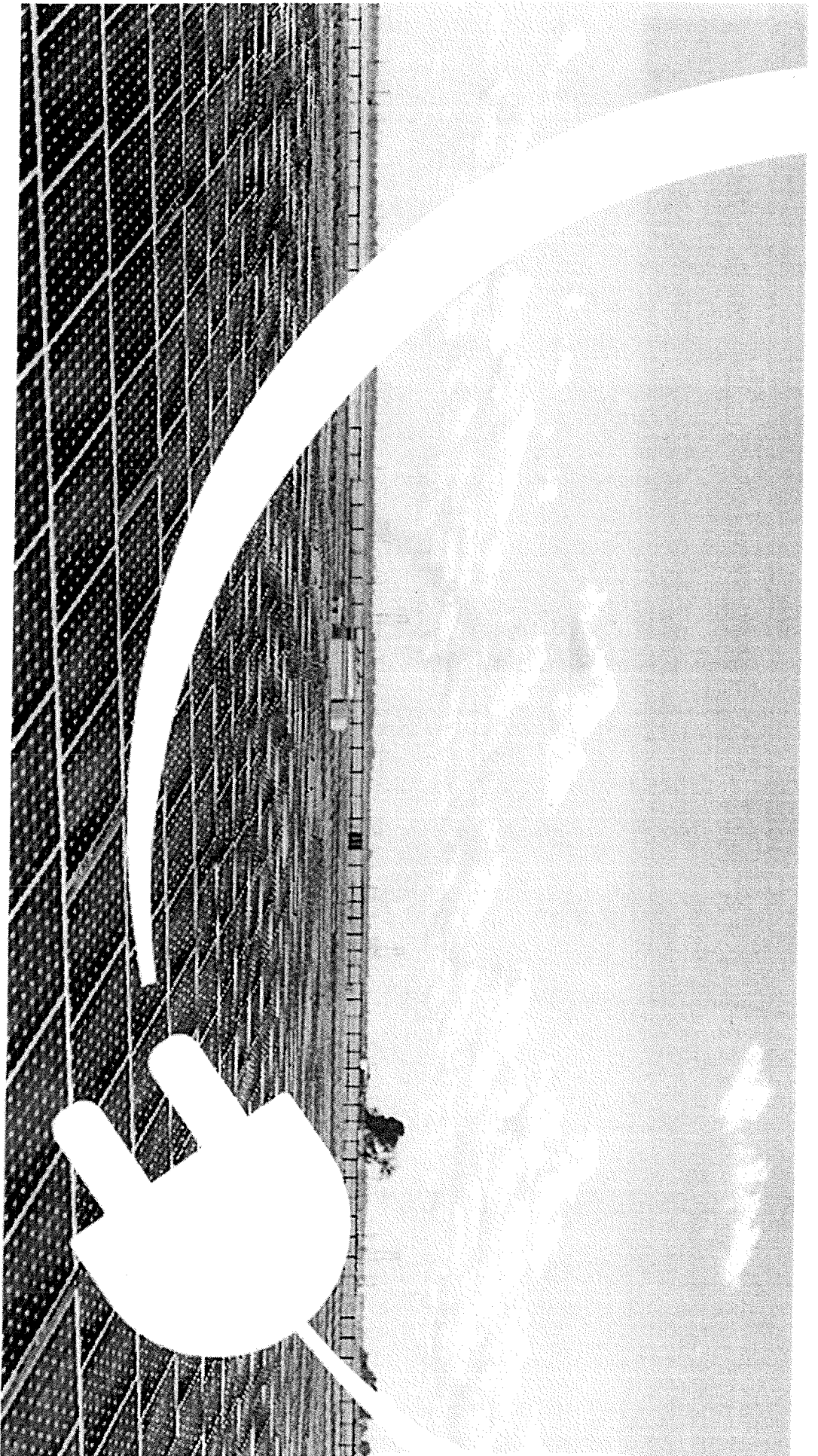
- **High quality education**

- **students**

- **staff**

- **parents**

- **community**



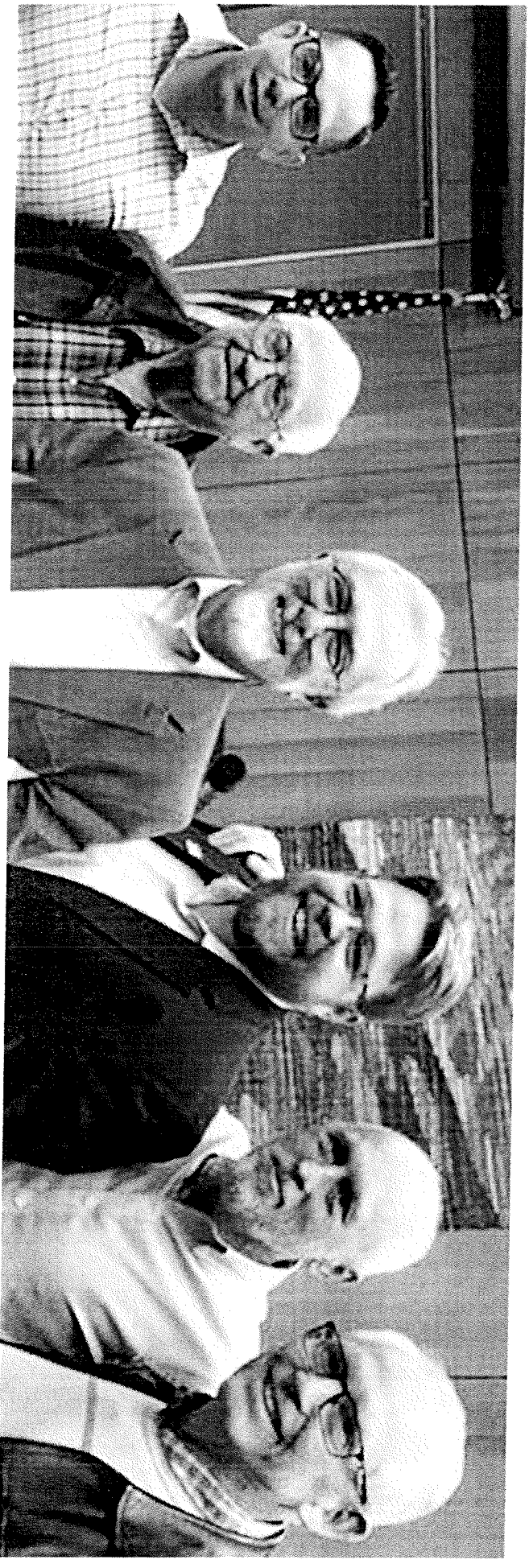
Yolo County Office of Education
March 12, 2018



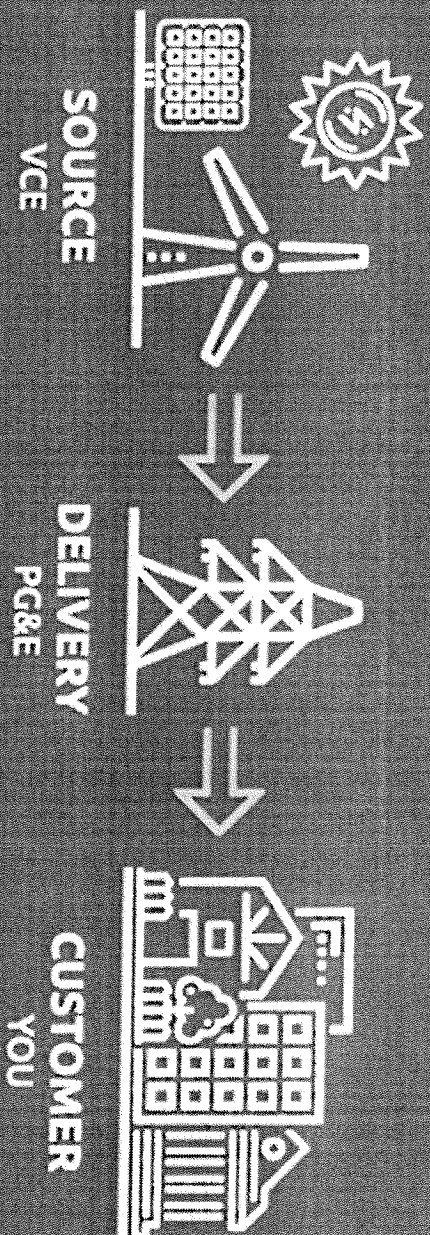
VALLEY
CLEAN ENERGY

WHO LEADS VALLEY CLEAN ENERGY?

**VCEA's board is comprised of locally elected leaders
from our member jurisdictions.**



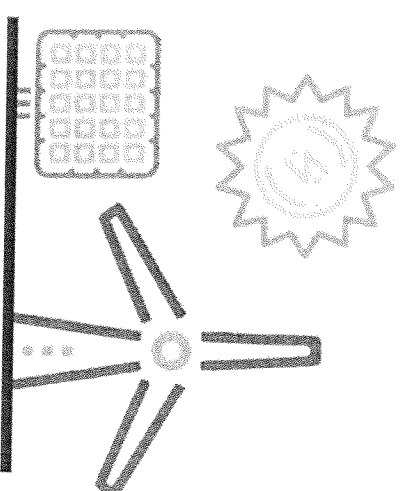
HOW DOES IT WORK?



DOES VCE REPLACE PG&E?

No, Valley Clean Energy sources the energy and PG&E continues to:

- Deliver electricity
- Maintain power lines
- Respond to new service requests and emergencies.
- Send you one consolidated bill

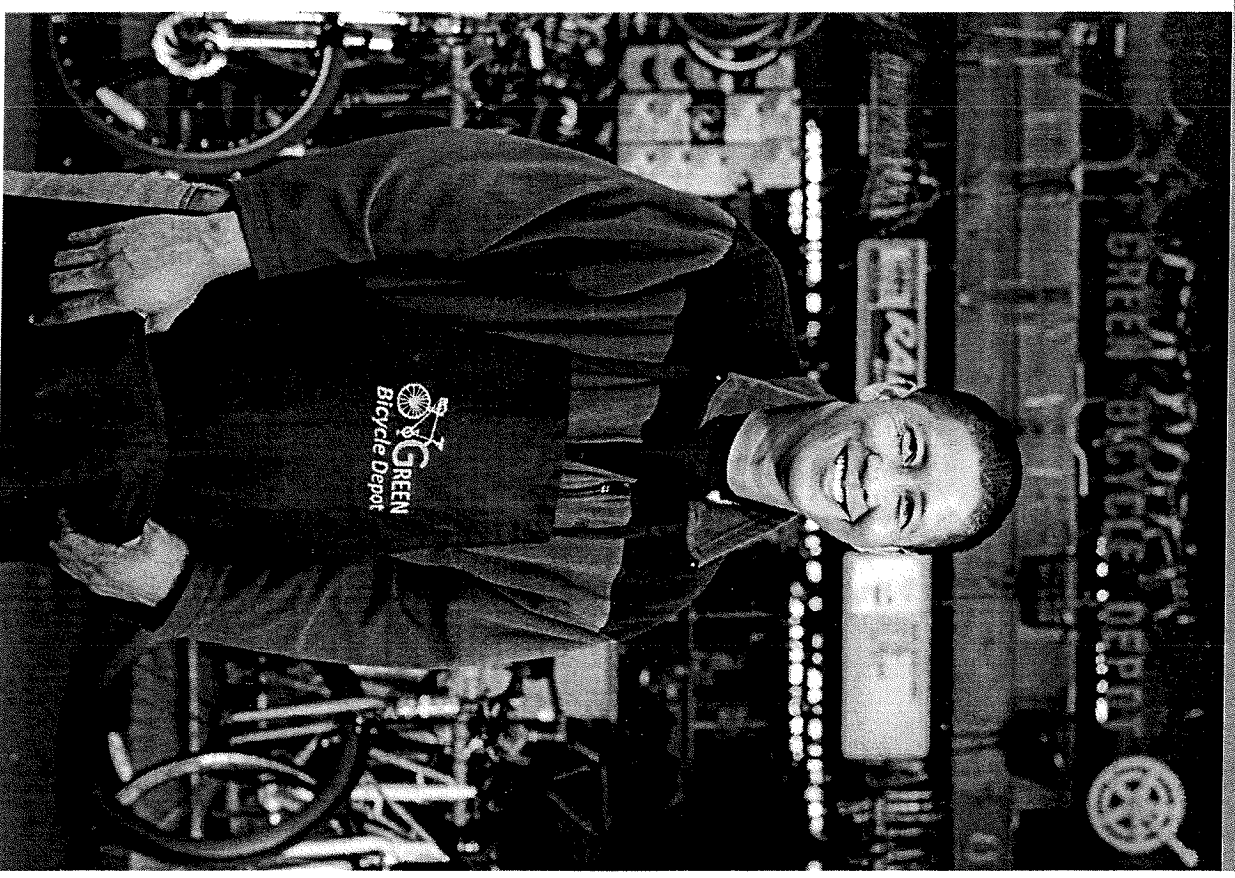


HOW DOES ENROLLMENT WORK?

In accordance with CA law,
**Valley Clean Energy is an
“opt-out” program**

All residents and businesses in
Woodland, Davis and
unincorporated Yolo County
will be **automatically enrolled**
in **June 2018**

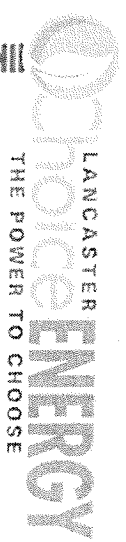
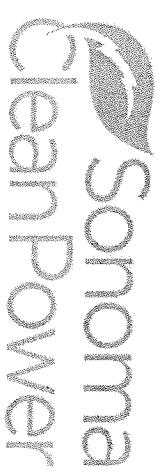
You can choose to opt-out and
return to PG&E at anytime



HAS IT BEEN SUCCESSFUL ELSEWHERE?

Yes! There are numerous other successful programs in California that have:

- Saved customers money
- Significantly reduced carbon emissions
- Invested in new, local renewable projects
- Created new jobs



WHAT IF I HAVE SOLAR PANELS?

You'll be automatically enrolled - there's no additional paperwork

You can earn credit based on the amount of electricity you generate to offset some or all charges you would normally pay for electricity

Your credits will roll over

Valley Clean Energy will purchase your excess power through our net metering program.

